

MODULOG 4.0

WITH MECHANICAL OR ELECTRICAL HEIGHT
ADJUSTMENT



MODULARITY - SECURITY - MULTIFUNCTIONALITY

MODULOG METAL STRUCTURE CHARACTERISTICS WITH MECHANICAL OR ELECTRICAL HEIGHT ADJUSTMENT



Comes in 2 versions :

Adjustable with adjustable brackets

- The sliding leg uprights are made of 120x60 mm steel and of 25/10e steel sheets. Height adjustment is carried out in 50 mm increments from 723 to 1073 mm (measured under the worktop). The user can adjust the height according to his morphology or the uses'demands.
- It is possible to move to an electrical adjustment by the implementation of a dedicated kit.



Electrical adjustment

- A set of 2 electrical actuators located in the 150x70 mm columns enables to go up frame, beam, worktop, back panel and uprights altogether.
- Height adjustment is possible from 723 to 1123 mm (measured under the worktop).
- The movement is controlled by a control box. This allows 3 positions to be memorised and make readable the height of the position.



4 different frames :

- Beam
- Beam and back panel
- Beam and back uprights for superstructure
- Beam, back panel and back uprights for superstructure



Technical characteristics :

- The horizontal frame is made of a 25/10e formed steel structure that allows a perfect rigidity of the worktop. Which is fixed to the feet uprights.
- A beam in 60x30 mm steel tubes links the 2 feet uprights which allows the structure's rigidity.
- The horizontal baseplates in 4 mm steel sheets and 25x25mm steel tubes are equipped of actuators with a 30 mm increments height adjustment to compensate for unevenness in the floor.
- The 1600 mm high back uprights are fixed into the beam and the horizontal frame.
- There are made of a 60x30mm steel tube with a 20/10e thickness, perforated on the 4 sides. On the 60cm lateral sides, the perforations have a 10x10mm dimensions with 50mm increments. On the 30mm front and rear sides they have a dimension of 30x10mm. They welcome the modular accessories such as shelves, rails, lighting supports fixed into the perforation. There are 2 or 3 uprights according to the workbenches width. To have 3 uprights allows to welcome 2 set of accessories independantly.
- The framework is finished in epoxy powder paint polymerized in a kiln at 180°C

Dimensions :

- 2 depths : 650 mm or 750 mm ; 4 lengths : 695, 925, 1360 or 1820 mm

CERTIFICATION

The worktops are PEFC certified
The MODULOG 4.0 can bear up to 300Kgs
In compliance with NF XPD 65762









CHARACTERISTICS OF THE WORKTOPS TO BE ASSOCIATED TO THE MODULOG 4.0 STRUCTURE

Melamine-coated worktops with 38 mm, 28 mm and 19 mm thickness:

Composition:

High density compressed Particle panel.
Covered on the 2 sides by a Grey impregnated decor paper U732 (corresponds to RAL 7035)

Manufacturing process:

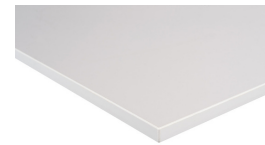
hot-glued ABS edges chamfered radius 1mm
gluing of the laminate under press

Characteristics:

Thickness : 38mm, 28mm and 19 mm particle board.
Density: 625kg/m³ +/- 25

Common application :

Packaging, assembly



Laminate Resitop worktop with a high thermal resistance 40 mm and 30 mm thickness

Composition:

High density compressed particale panel.
Laminate sheets in grey coated U732 (corresponds to RAL 7035) Laminate counter-balance sheet 8/10e on the under-side.

Manufacturing process:

Laminate made of impregnated resin 8/10e paper sheets.
Gluring of the laminate under press. Hot-glued ABS edges chamfered radius 1 mm.

Characteristics:

Thickness : particle panel in 38 mm and 28mm, laminate 8/10e, total thickness 40 mm and 30 mm.
Density: 625kg/m³ +/- 25.
The laminate coating can resist up to a superficial temperature of 180° without any damage.

Applications courantes :

Plasturgy, assembly



Anti-static ESD laminated worktops with a 30mm thickness :

Composition:

High density compressed particle panel.
8/10e laminate sheets in grey coated U732 (corresponds to RAL 7035) Laminate counter-balance sheet 8/10e on the under-side.

Manufacturing process:

Laminate made of impregnated resin 8/10e paper sheets.
An under-coating of carbone allows the conductivity
Gluing of the laminate under press
Hot-glued ABS edges chamfered radius 1mm

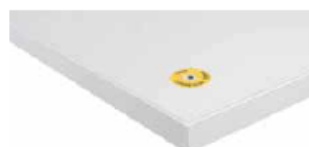
Characteristics :

Thickness : particle panel in 28 mm, 8/10e laminate in surface, total thickness of 30 mm. Density : 625 kg/m³ +/- 25 ;
The laminate coating can resist up to a superficial temperature of 180° without any damage.

Electrostatic dissipation connection located under the worktop to be earthed to dissipate static electricity

Common application :

Electronics, electromechanics, IT environment, métrology





MODULOG 4.0 ESD RANGE CHARACTERISTICS

THE ELECTROSTATIC DISCHARGE

Electrostatic discharge is a rapid passage of electric current between two objects with different electrical potentials. The cause of the effects of ESD is the static electricity generated by the separation of electrical charges that occurs when two materials are brought into contact and then separated. The separation between two materials generates a charge creating an electrical potential difference that can lead to an ESD event. The electronics industry is particularly concerned by the risk of unwanted fugitive currents that can damage electronic equipment such as integrated circuits.

THE PROTECTION MEANS

Protection against unwanted effects of the electro-static discharges is made possible by earthing each element at the workplaces. It is key to do it for the whole area environment: floor, furnitures, users. An ESD area (isolated) has to be created, where electronics components are manipulated.

This area is the warranty that no electrical charge remains present.

Worktops: ESD worktops are made of laminate charged in carbone which allows the circulation and the evacuation of the electrostatic current.

Coating: a specific semiconducting paint RAL 7035 (other colors on request) charged in carbone allows the electrostatic current's evacuation too.

Connecting elements : Electrical braids or earthing kits for elements or users complete the evacuation action. Specific actuator or castors allow the earth connection of either furniture or seats.

Insulation elements : On the contrary, some elements need to be insulated. Insulating foam kits make it possible by cutting off the flow of electrostatic current.

A GLOBAL ACTION

There is not only one but a plenty of ways to implemente an ESD area.. The first step is to list the protection specifications by describing the awaited level of protection as well as the earthing system. Any people and staff members have to be informed of the ESD area's rules. They have to have been informed of the equipment they must wear as well as their own movements' restrictions as well as how they have to manipulate what they hold. The treatment of the area will be considered as a whole: floor, furniture, clothes, components etc ...

NORMALISATION

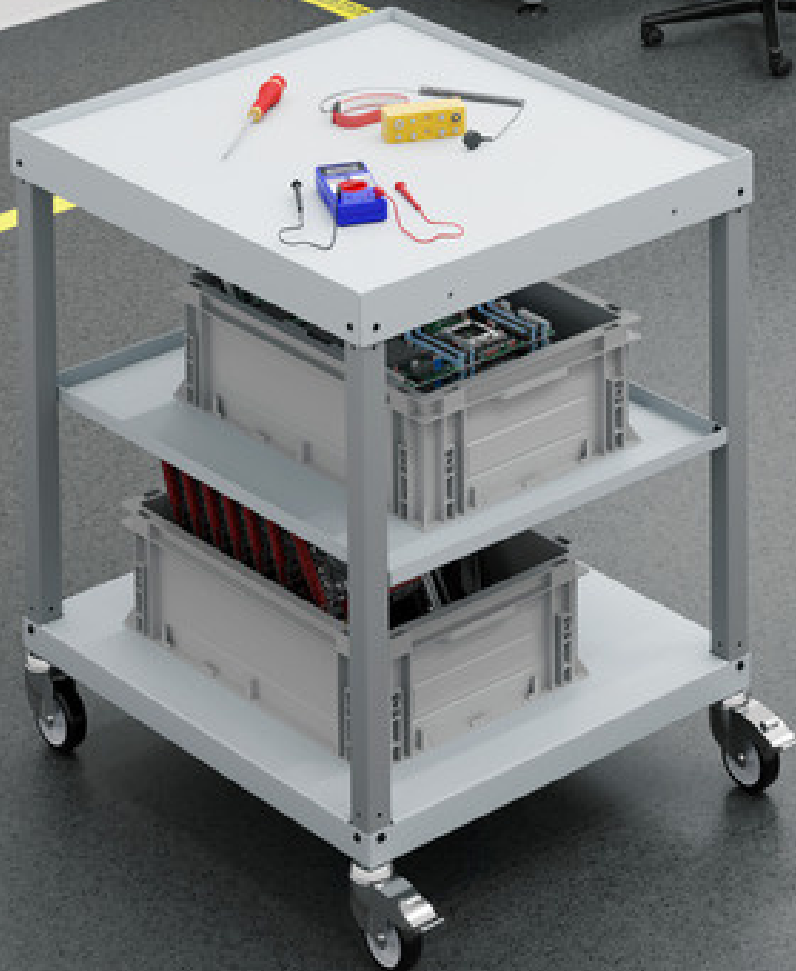
The proposed ESD furnitures comply with IEC 61340-5-1 relativ to the protected areas.



CERTIFICATION

The worktops are PEFC certified
The MODULOG 4.0 can bear up to 300Kgs
In compliance with NF XPD 65762





ACCESSORIES



RAIL FOR CONTAINER

To be fixed between the 2 superstructure uprights
L. 635 / 865 / 1300 mm



PERFORATED TAPE

To be fixed between the 2 superstructure uprights
L. 635 / 865 / 1300 mm



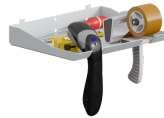
TROUGH SHELF

To be fixed between the 2 superstructure uprights
L. 635 / 865 / 1300 mm



EDGE SHELF

To be fixed to an upright, a rail for container or a perforated panel
L. 200 / 340 / 510 mm - D. 220 mm



MULTIFUNCTIONS EDGE SHELVES

To be fixed to an upright, a rail for container or a perforated panel
L. 330 mm - D. 240 mm



DISPENSER BAR

To be fixed between the 2 superstructure uprights
For rolls of bubble wrap, kraft paper or corrugated paper
L. 635 / 865 / 1300 mm - Diam. 25 mm



DOUBLE LABELS DISPENSER

To be fixed to an upright, a rail for container or a perforated panel
L. 150 mm on each side - Diam. 25 mm



LABELS DISPENSER

To be fixed on an upright
L. 360 mm - Diam. 30 mm



BOTTLE HOLDER

L. 100 mm - D. 100 mm
H. 130 mm



25L BIN WITH ITS HANGING SYSTEM

L. 340 mm - D. 258 mm
H. 344 mm



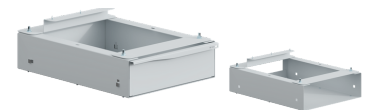
MANUAL PAPER CUTTER

To be fixed on or under the worktop or between the uprights
Guided line for the cutter, system to hold the cutted paper
L. 865 / 1300 / 1760 mm



SLIDING SUPPORT FOR ZEBRA PRINTER

The drawer support comes with a 100% opening for a full access to the printer
L. 427 mm - D. 588 mm - H. 350 mm



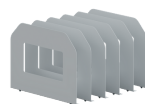
BOX AND DRAWERS

100% pull-out drawers
Box : L. 427 mm - D. 589 mm - H. 125 mm
Drawers : L. 396 mm - D. 5602 mm - H. 120 mm
Usless dimensions



SHELF WITH SEPARATORS

The separators are fixed under the shelf by screws and nuts each 120 or 125MM (according to the shelf's dimensions)
L. 635 / 865 / 1300 / 1760 mm - H. 350 mm - D. 500 mm



SET OF 6 SEPARATORS

Fixing system on the shelf by screws and nuts
H. 350 mm - D. 500 mm



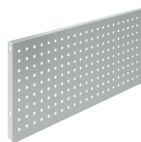
TILTING AND DEPTH ADJUSTABLE SHELF

To be fixed between the superstructure uprights
L. 865 / 1300 mm - D. 250 mm
L. 865 / 1300 mm - D. 350 mm
L. 865 / 1300 mm - D. 450 mm



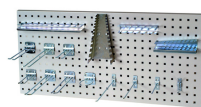
TILTING SHELF

To be fixed between the superstructure uprights
L. 865 / 1300 mm - D. 250 mm
L. 865 / 1300 mm - D. 350 mm
L. 865 / 1300 mm - D. 450 mm



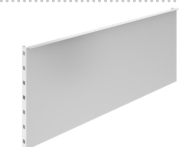
PERFORATED PANEL

To be fixed between the superstructure uprights
L. 635 / 865 / 1300 mm - H. 375 mm



ACCESSORIES FOR TOOLS HOLDER

For perforated panel



MAGNETIC PANEL

To be fixed between the superstructure uprights
L. 635 / 865 / 1300 mm - H. 450 mm

SWIVELLING TABLE ON ARTICULATED ARM

To be fixed on one of the superstructure uprights



For Europe box or laptop
Format 15" / tablet dimensions 610x410
Format 17" / tablet dimensions 310x410
Standard / tablet dimensions 560x200

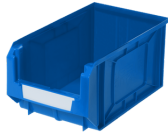


SWIVEL FRAME FOR STORAGE BIN SUPPORT RAIL

To be fixed between the superstructure uprights

L. 700 mm - H. 460 mm

ACCESSORIES



STORAGE BIN

1 L - 3.5 L - 10L



EUROPE BOX

L. 600 - P. 400 - H. 200 mm - capacity 38 liters
L. 400 - P. 300 - H. 200 mm - capacity 17 liters
L. 600 - P. 400 - H. 300 mm - capacity 58 liters



WORKBENCH LUMINAIRE BRACKET

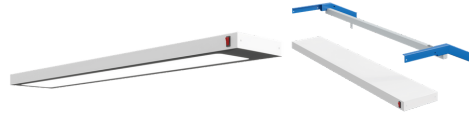
with rail for trolleys

L. 635 / 865 / 1300 / 1530 / 1760 mm



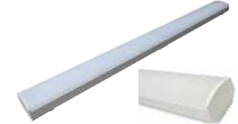
METAL PLATE FOR LIGHTING SUPPORT

Attaches with 4 screws on the luminaire support
L. 635 / 865 / 1300 mm



LED BENCH LIGHT

suitable for precision workstations
L. 920 / 1355 mm - D. 251 mm - H. 50 mm



LED LIGHTING STRIP

15W with switch
L. 810 mm - D. 80 mm - H. 50 mm



TUBULAR LED SURFACE LUMINAIRE

fixing by magnet under shelf or on upright
L. 670 / 520 mm - diam. 40 / 20 mm



ELECTRICAL STRIP WITH SWITCH

To be fixed between the superstructure uprights or on the worktop
L. 440 mm



ELECTRICAL STRIP WITH CIRCUIT BREAKER

positioning at the bottom of the worktop
6 2-phase sockets
L. 632 / 862 / 1292 mm



TURNTABLE

rotation by ball crown
D. 380 / 600 mm

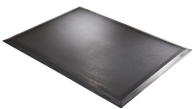


TROLLEY



SUPPORT 10 A4 POCKETS

10 transparent pockets with colored borders
fixing on metal support



ANTI-FATIGUE MAT

non-slip rubber
L. 1350 mm - D. 1000
Ep. 16 mm



INDEPENDENT FOOTREST

adjustable in height
from 70 to 250 mm
L. 500 mm - D. 320 mm



KEYBOARD AND MOUSE HOLDER

L. 585 mm - D. 330 mm - H. 80 mm



ADJUSTABLE AND SECURED SUPPORT FOR CENTRAL PROCESSING UNIT

Vertical fixation under the worktop
L. 140/190 mm - D. 350/498 mm ; P. 464 mm useless dimensions



CENTRAL PROCESSING UNIT FIXATION

For superstructure uprights

L. 100 mm - D. 225 mm - H. 250 mm



FIXING SYSTEM FOR 27" MAX SCREEN

To be fixed between the superstructure uprights



FIXING SYSTEM FOR 10/12" PADS



LAPTOP FIXING SYSTEM

L. 500 mm - D. 250 mm



LAPTOP FIXING SYSTEM

L. 550 mm - D. 250 mm

To be fixed on one of the superstructure uprights



DRAWERS UNIT

From 1 to 6 drawers

L. 430 mm - D. 600 mm - H. 100 / 380 / 530 mm



DOOR UNIT

L. 430 / 860 mm - D. 600 mm - H. 530 mm

STRENGTHS OF THE MODULOG RANGE

WITH MECHANICAL AND HEIGHT ADJUSTMENT

MODULARITY



SECURITY



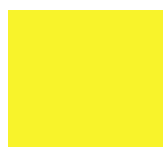
MULTI-FUNCTIONALITY



MODULOG 4.0 WORKBENCH STANDARD COLOURS



RAL 1015 BS



RAL 1018 JS



RAL 2004 OG



RAL 3000 RV



RAL 5002 BM



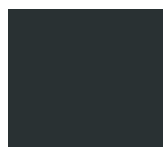
RAL 5010 BP



RAL 5015 BI



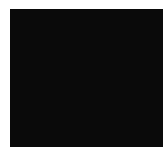
RAL 7004 GM



RAL 7016 GA



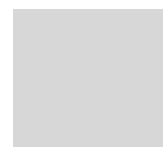
RAL 7035 GC



RAL 9005 NN



RAL 9010 BB



RAL 7035 ESD

STANDARD WORKTOP COATINGS

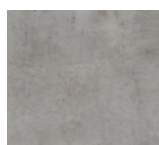


LIGHT GRAY MELAMINE
& LAMINATED

AVAILABLE LAMINATED OR MELAMINE COATING ON REQUEST



ACACIA



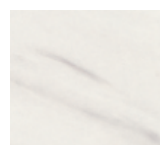
CONCRETE



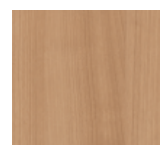
OAK



BEECHWOOD



MARBEL



CHERRYWOOD



WARRANTY :

Our equipment is guaranteed 5 years under normal use



FRENCH MANUFACTURE

SOFAME
The industrial furniture experts

www.sofame.fr