

NETLOG

FIXED - ELECTRICALLY HEIGHT-ADJUSTABLE VERSIONS



ACCESSIBILITY - UPGRADABILITY - CLEANLINESS

PROPERTIES OF THE METAL STRUCTURE NETLOG FIXED VERSION



NETLOG features

The frame is composed for a steel tube structure, thickness 20/10th, folded sheet steel, thickness 25/10th and folded sheet steel, thickness 12/10th.

The legs and ladders are made of welded steel tube, cross-section 60x60mm, horizontal cross-members and skirt made of folded metal sheet in U-shape, cross-section 58x196x58.

The end cheeks are made of folded sheet steel in L-shape, cross-section 195x40. The ladders are connected via 2 cross-members and 1 base sheet: all 3 in the upper section under the worktop. The legs and ladders tubes are fitted with plastic end caps with screw jacks for levelling purposes.

The absence of a crosspiece in the lower part allows total clearance under the post.

The elements are designed to limit dust retention thus, ensuring easy cleaning of structural surfaces rendering them compliant with standard NF EN ISO 14 644-1 for clean rooms level 7, 8 and 9.

An upgrade kit allows you to switch from the fixed NETLOG version to the electrically height-adjustable NETLOG version.



Association of frame and worktop

The NETLOG workstation frame may be fitted with the worktops present in the workbench worktops description pages, as well as stainless-steel 304L worktops.

The worktop is fastened to the frame with a VBA TB 5x20 crosshead screws and may be placed flush or centred depending on utilisation requirements and constraints. The stainless-steel worktops are fastened to the ladders with welded studs and nuts.



Dimensions

- Height : 780 mm (excl.worktop)
- Depths : 750 and 1000 mm
- Widths : 750, 1000, 1200, 1500, 1800, 2000 and 2400 mm



Assembly

- Fast and easy assembly
- Delivered in kit ready-to-be assembled (assembly possible on request)

CERTIFICATIONS

The worktops are certified PEFC
The admissible load for the fixed NETLOG is 500Kg
In compliance WITH standard XPD 65762





PROPERTIES OF THE METAL STRUCTURE NETLOG ELECTRICALLY HEIGHT-ADJUSTABLE VERSION



NETLOG features

The frame is composed for a steel tube structure, thickness 20/10th, folded sheet steel, thickness 25/10th and folded sheet steel, thickness 12/10th.

The legs and ladders are made of welded steel tube, cross-section 60x60mm, horizontal cross-members and skirt made of folded metal sheet in U-shape, cross-section 58x196x58.

The end cheeks are made of folded sheet steel in L-shape, cross-section 195x40. The ladders are connected via 2 cross-members and 1 base sheet: all 3 in the upper section under the worktop. The legs and ladders tubes are fitted with plastic end caps with screw jacks for levelling purposes.

The absence of a crosspiece in the lower part allows total clearance under the post.

The frame is finished with epoxy powder paint, oven polymerised at 180°C.

The elements are designed to limit dust retention thus, ensuring easy cleaning of structural surfaces rendering them compliant with standard NF EN ISO 14 644-1 for clean rooms level 7, 8 and 9.

A set of 4 electrical columns is used to raise the frame. A control-box is mounted in a ladder. The setting stroke ranges from 800 to 1080 mm for the frame excluding the worktop thickness. A programmable remote-control with height display enables programming of 3 positions.

The adjustment stroke extends from 800 to 1080 mm for the frame excluding the thickness of the chainring.



Association of frame and worktop

The NETLOG workstation frame may be fitted with the worktops present in the workbench worktops description pages, as well as stainless-steel 304L worktops.

The worktop is fastened to the frame with a VBA TB 5x20 crosshead screws and may be placed flush or centred depending on utilisation requirements and constraints.

The stainless-steel worktops are fastened to the ladders with welded studs and nuts



Dimensions des postes

- Height : 800 to 1080mm (excl.worktop)
- Depths : 750 and 1000 mm
- Widths : 750, 1000, 1200, 1500, 1800, 2000 and 2400 mm



Montage

- Fast and easy assembly
- Delivered in kit ready-to-be assembled (assembly possible on request)

CERTIFICATIONS

The worktops are certified PEFC

The admissible load for the fixed NETLOG is 500Kg

In compliance WITH standard XPD 65762





ACCESSORIES



ELECTRICAL UPGRADE KIT FOR FIXED NETLOG

To convert a fixed Netlog version to an electrically height adjustable version



RAIL FOR CONTAINER

To be fixed between the 2 superstructure uprights
L. 635 / 865 / 1300 mm



TROUGH SHELF

To be fixed between the 2 superstructure uprights
L. 635 / 865 / 1300 mm



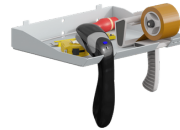
PERFORATED TAPE

To be fixed between the 2 superstructure uprights
L. 635 / 865 / 1300 mm



EDGE SHELF

To be fixed to an upright, a rail for container or a perforated panel
L. 200 / 340 / 510 mm
P. 220 mm



MULTIFUNCTIONS EDGE SHELVES

L. 330 mm - P. 240 mm



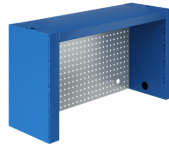
SHELF EXTENSION

Shelves with 2 lateral cabinets enabling passage of cables
H. 650 mm - D. 240 mm - Capacity 50 kg



INTERMEDIATE SHELF FOR RAISED SHELF

The shelves may be positioned at 2 heights which are added to the raised shelf.
Admissible load up 50 kg evenly distributed



PERFORATED BACKBOARD FOR RAISED SHELF

allows the attachment of tool holder accessories
With square holes 10x10 every 38mm enabling hooking on of tool holder accessories



BOTTLE HOLDER

L. 100 mm - D. 100 mm
H. 130 mm



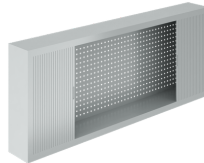
25L BIN WITH ITS HANGING SYSTEM

L. 340 mm - D. 258 mm
H. 344 mm



PERFORATED UPPER BACKBOARD

with 2 uprights for workbenches
square perforated panel 10x10 every 38 mm



BACK OF WORKBENCH CABINET WITH ROLLER BLIND DOOR

square holes 10x10 every 38 mm over the entire height
D. 250 mm - H. 800 mm



SLIDING SUPPORT FOR ZEBRA PRINTER

The drawer support comes with a 100% opening for a full access to the printer
L. 427 mm - D. 588 mm - H. 350 mm



SUPERSTRUCTURE UPRIGHTS

Uprights: cross-section 60x30mm, for fastening of accessories
H. 1200 mm without cross-member



SUPERSTRUCTURE UPRIGHTS

2 uprights for attaching accessories: perforated panel, shelves, bin rails, etc.
H. 600 mm without cross-member



TILTING AND DEPTH ADJUSTABLE SHELF

To be fixed between the superstructure uprights
L. 865 / 1300 mm - D. 250 mm
L. 865 / 1300 mm - D. 350 mm
L. 865 / 1300 mm - D. 450 mm



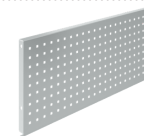
TILTING SHELF

To be fixed between the superstructure uprights
L. 865 / 1300 mm - D. 250 mm
L. 865 / 1300 mm - D. 350 mm
L. 865 / 1300 mm - D. 450 mm



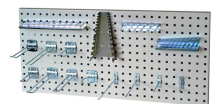
RECLINING AND DEPTH-ADJUSTABLE SHELF DIVIDERS

Screw and nut fixing on the side of the shelf without edge
H 192mm. Available in 2 depths.



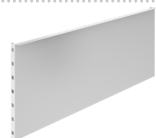
PERFORATED PANEL

To be fixed between the superstructure uprights
L. 635 / 865 / 1300 mm
H. 375 mm



ACCESSORIES FOR TOOLS HOLDER

For perforated panel



MAGNETIC PANEL

To be fixed between the superstructure uprights
L. 635 / 865 / 1300 mm - H. 450 mm



SWIVELLING TABLE ON ARTICULATED ARM

To be fixed on one of the superstructure uprights
For Europe box or laptope
Format 15" / tablet dimensions 610x410
Format 17" / tablet dimensions 310x410
Standard / tablet dimensions 560x200



SWIVEL FRAME FOR STORAGE BIN SUPPORT RAIL

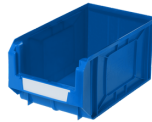
To be fixed between the superstructure uprights
L. 700 mm - H. 460 mm

ACCESSORIES



GRAB CONTAINERS SUPPORT RAIL

on perforated panel
L. 75 / 145 mm



STORAGE BIN

1 L - 3.5 L - 10L



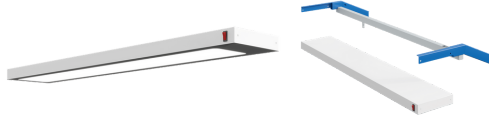
WORKBENCH LUMINAIRE BRACKET

with rail for trolleys
L. 635 / 865 / 1300 / 1530 / 1760 mm



METAL PLATE FOR LIGHTING SUPPORT

Attaches with 4 screws on lighting support
L. 635 / 865 / 1300 mm



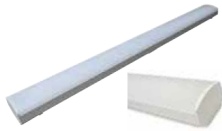
LED BENCH LIGHT

suitable for precision workstations
L. 920 / 1355 mm - D. 251 mm - H. 50 mm



TUBULAR LED SURFACE LUMINAIRE

fixing by magnet under shelf or on upright
L. 670 / 520 mm - diam. 40 / 20 mm



LED LIGHTING STRIP

15W with switch
L. 810 mm - D. 80 mm - H. 50 mm



ELECTRICAL STRIP WITH CIRCUIT BREAKER

positioning at the bottom of the worktop
6 2-phase sockets
L. 632 / 862 / 1292 mm



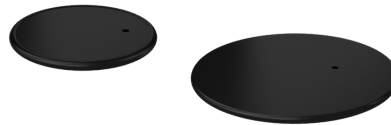
ELECTRICAL STRIP WITH SWITCH

To be fixed between the superstructure uprights or on the worktop
L. 440 mm



REAR METAL EDGE FOR WORKTOP

total height 100 mm
L. 750 / 1000 / 1200 / 1500 / 1800 / 2000 / 2400 mm



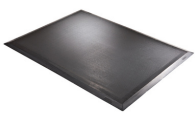
TURNTABLE

rotation by ball-race crown
D. 380 / 600 mm



SUPPORT 10 A4 POCKETS

10 transparent pockets with colored borders
fixing on metal support



ANTI-FATIGUE MAT

non-slip rubber
L. 1350 mm - D. 1000 mm
Ep. 16 mm



INDEPENDENT FOOTREST

Height-adjustable
from 70 to 250 mm
L. 500 mm - D. 320 mm



KEYBOARD AND MOUSE HOLDER

L. 585 mm - D. 330 mm - H. 80 mm



ADJUSTABLE AND SECURED SUPPORT FOR CENTRAL PROCESSING UNIT

Vertical fixation under the worktop
L. 140/190 mm - D. 350/498 mm ; P. 464 mm useless dimensions



CENTRAL PROCESSING UNIT FIXATION

For superstructure uprights
L. 100 mm - D.225 mm - H.250 mm

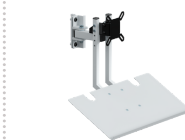


FIXING SYSTEM FOR 27" MAX SCREEN

To be fixed between the superstructure uprights



FIXING SYSTEM FOR 10/12" PADS



LAPTOP FIXING SYSTEM

L. 500 mm - D. 250 mm



LAPTOP FIXING SYSTEM

L. 550 mm - D. 250 mm

To be fixed on one of the superstructure uprights



DRAWERS UNIT

From 1 to 6 drawers
L. 430 mm - D.600 mm - H. 100 / 380 / 530 mm



DOOR UNIT

L. 430 / 860 mm - D. 600 mm - H. 530 mm

STRENGTHS OF THE NETLOG RANGE

FIXED - ELECTRICALLY HEIGHT-ADJUSTABLE

ACCESSIBILITY



UPGRADABILITY



CLEANLINESS



NETLOG WORKBENCH STANDARD COLOURS



RAL 1015 BS



RAL 1018 JS



RAL 2004 OG



RAL 3000 RV



RAL 5002 BM



RAL 5010 BP



RAL 5015 BI



RAL 7004 GM



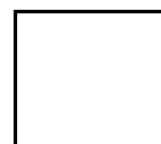
RAL 7016 GA



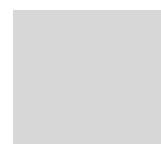
RAL 7035 GC



RAL 9005 NN



RAL 9010 BB



RAL 7035 ESD

STANDARD WORKTOP COATINGS



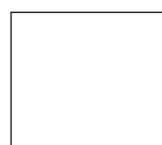
LIGHT GRAY MELAMINE & LAMINATED



BEECH MULTIPLEX



MARBLED BLUE SOUPLÉDUR



WHITE PEHD



BLACK RUBBER



GALVA

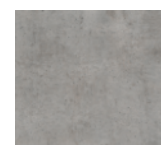


INOX

AVAILABLE LAMINATED OR MELAMINE COATING ON REQUEST



ACACIA



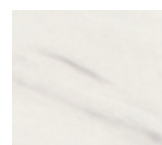
CONCRETE



OAK



BEECHWOOD



MARBEL



CHERRYWOOD



WARRANTY:

Our equipment is guaranteed 5 years under normal use



FRENCH MANUFACTURER

SOFAME
The industrial furniture experts

www.sofame.fr