

REGULOG

TABLE WITH ELECTRIC HEIGHT ADJUSTMENT



PRECISE height adjustment
FREQUENT configuration changes

EASY operation
SAFE use

CHARACTERISTICS



Characteristics of the metal framework:

The REGULOG table with electric height adjustment is supported on two base plates in 40/10 and 80/10 sheet steel, each equipped with two adjustment cylinders. Mounted on top of the two base plates are two telescopic columns with an electricity supply to adjust the table top to exactly the required working height. The cross-member in 12/10 thickness sheet steel positioned between the two columns gives great strength to the framework. A control box is located under the table top. The height adjustment range extends from 700 to 1100 mm, thickness of table top not included.



Remote control:

The special feature of the remote control is its blend of modern design and intuitive operation. The up and down buttons have been designed to be identifiable by the user even with eyes closed, as the symbols are chrome plated and in relief. This remote control is supplied with a 1700 mm cable and RJ45 plug.



Matching framework to top:

The framework of the REGULOG table can be fitted with a top in 19 or 28-mm melamine or 24 mm beech multiplex. The table top is fixed to the framework with VBA TB 5x20 wood screws.



Dimensions of the workstations:

Length: 750 (W.750 only), 1000, 1200, 1500, 1800, 2000 and 2400.
Width: 750 and 1000.



Style and modular construction:

New, elegant design, a perfect match for the strength and careful finish of the table. This table is highly adaptable and its modular construction means it can be matched to the needs of each task and operator.



Assembly:

Quick and easy assembly.
Table supplied in kit form.
Assembly available on request.



Load:

The maximum permissible uniformly distributed load for the REGULOG is 140 kg dynamic load (see table page 6).

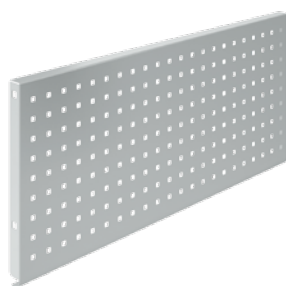






SUPPORT PILLARS

H. 600 mm without cross-member
2 uprights



PERFORATED REAR PANELS to be fixed between the uprights of support pillars

L. 635 / 865 / 1300 mm
H. 375 mm



NOTICE-BOARD PANELS, MAGNETIC

L. 635 / 865 / 1300 mm
H. 450 mm

ADJUSTABLE TILTING SHELF

to be fixed between the uprights of support pillars

L. 635 / 865 / 1300 mm - W. 250 mm
L. 635 / 865 / 1300 mm - W. 350 mm



SUPPORT FOR FIXING ACCESSORIES UNDERNEATH THE REGULOG

L. 730 - W. 25 - H. 25 mm



SUPPORT RAIL FOR OPEN-FRONT BINS

to be fixed between the uprights
of support pillars

L. 635 / 865 / 1300 mm



CPU SUPPORT, ADJUSTABLE AND WITH SECURITY HASP

L. 140/190 mm
W. 350/498 mm
H. 464 mm

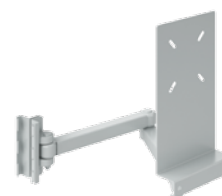


SUPPORT 10 A4 DOCUMENT HOLDERS



SLIDING KEYBOARD SUPPORT + MOUSE TRAY

L. 585 mm - W. 330 mm
H. 80 mm
except for L. 750 mm

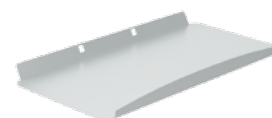


MONITOR SUPPORT ARM up to 22" twin arms

L. 250 - W. 180 mm



CPU SUPPORT HORIZONTAL



KEYBOARD SUPPORT FOR SCREEN BRACKET

L. 560 mm - W. 200 mm

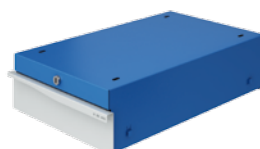


R100 CASTORS



INCLINED ELECTRIC SUPPLY STRIP without switch

L. 1200 / 1500 / 1800 / 2000 mm



SINGLE DRAWER UNIT

L. 360 mm - W. 615 mm
H. 145 mm



WASTE BAG SUPPORT Sliding

L. 270 mm - W. 307 mm



ADVANTAGES OF THE REGULOG TABLE

ELECTRIC HEIGHT ADJUSTMENT



COMPLIES WITH THE REGULATIONS LAID DOWN IN EUROPEAN DIRECTIVE 2006/42/EC

Maximum permissible load when moving – in kg, evenly distributed

LENGTH OF TABLE TOP	750	1000	1200	1500	1800	2000	2400
PLAIN TOP WITHOUT ACCESSORIES	140	130	120	115	110	105	95
WITH ACCESSORIES ON SUPPORT PILLARS H 600	130	120	105	100	90	85	70
WITH 1 DRAWER UNIT	130	120	110	105	100	95	85
WITH SUPPORT PILLARS + 1 DRAWER UNIT	120	110	95	90	80	75	65

Make sure loads are evenly distributed by limiting weight on the support pillars and in drawers.



For health and environmental reasons, the electric columns contain no PVC as standard.



In the face of current environmental and climatic challenges, we endeavour to demonstrate a responsible approach and to find alternatives wherever possible. The electricity consumption of our range of control boxes is only 0.1W when on standby. This new technology has enabled traditional standby consumption of 1-2 W to be reduced to only 0.1W.

COLOUR OF LEGS, COLUMN AND CROSS-MEMBER



RAL 7035 GC



TABLE TOPS BEAR THE PEFC LABEL.



GUARANTEE:

Our equipment carries a 5-year parts and labour guarantee subject to normal use, except for the mechanisms. In accordance with standard market practice, the batteries are guaranteed 12 months.



FRENCH MANUFACTURER

SOFAME
The industrial furniture experts

www.sofame.fr