

SI HEAVY DUTY WORKBENCHES

FIXED HEIGHT / HEIGHT ADJUSTMENT WITH LOCKING SCREWS, HAND CRANK AND ELECTRIC



STRENGTH - ERGONOMIC - SAFETY - ADAPTABILITY

CHARACTERISTICS OF THE SI FIXED HEIGHT METAL FRAMEWORK



SI fixed-height frame

The frame consists of a structure of formed sheet steel thickness 25/10.

The legs are formed into 42x80x42 mm U sections and welded, the horizontal cross-members are formed into 40x60x40 mm U sections.



The framework is finished in epoxy powder paint polymerized in a kiln at 180°C.

The design is such that the assembly of the different metal components shows no external screws or bolts, thus providing the user with better protection against injury.

The SI frame may be dowelled to the floor through the perforated plate constituting a foot at the lower end of the legs. This plate prevents damage to flooring.



Matching framework to top:

The frame of the SI workbench can be fitted with a workbench top in 40 or 24 mm beech multiplex, 40 or 30 mm high heat-resistance laminated, 30 mm ESD laminated, 38 or 28 mm melamine, 40 mm MDF with HPL coat, 40 mm anti-shock Taralay or 45 mm multiplex (40 mm) with PE cover (5 mm).

The workbench top is fixed to the frame with TH 6x25 hexagon-head sleeper screws and can be positioned flush or centred depending the user's needs.



Dimensions of the workstations

- Length: 750 (W.750 only), 1000, 1200, 1500, 1800, 2000 and 2400
- Width: 750 and 1000

Options

The legs can be replaced with a drawer cabinets which supports the workbench top and the upper and lower cross-members. This drawer cabinets is 430 mm wide overall and 600 mm deep overall.

The framework can be equipped with height adjustment cylinders (travel 30 mm, from 825 mm to 855 mm for the fixed height frame, excluding workbench top) or a set of four 100 mm castors, two of them braked, in which case the maximum permissible load is 300 kg.



Assembly

- Quick and easy assembly
- Workbench supplied in kit form
- Assembly available on request

Labels

The SI fixed-height workbench bears GS label, the NF Environnement (environment) and NF Mobilier technique (technical furniture) quality labels.

Workbenches tops bear the PEFC label. The certified maximum permissible load for the SI fixed height workbench is 1500 kg. In compliance with standard XPD 65762.





CHARACTERISTICS OF THE METAL FRAMEWORK OF THE SI WORKBENCH WITH LOCKING SCREWS HEIGHT ADJUSTMENT



SI frame with mechanical height adjustment

The frame consists of a structure of formed sheet steel thickness 25/10.

The legs are formed into 42x80x42 mm U sections and welded, the horizontal cross-members are formed into 40x60x40 mm U sections.

The SI workbench with rack height adjustment enables the working height to be modified in 40 mm steps and locked with screws and bolts. The adjustment range extends from 740 to 1020 for the frame, excluding the thickness of the workbench top.



Matching framework to top

The frame of the SI workbench can be fitted with a workbench top in 40 or 24 mm beech multiplex, 40 or 30 mm high heat-resistance laminated, 30 mm ESD laminated, 38 or 28 mm melamine, 40 mm MDF with HPL coat, 40 mm anti-shock Taralay or 45 mm multiplex (40 mm) with PE cover (5 mm).

The workbench top is fixed to the frame with TH 6x25 hexagon-head sleeper screws and can be positioned flush or centred depending the user's needs.



Dimensions of the workstations

- Length: 750 (W.750 only), 1000, 1200, 1500, 1800, 2000 and 2400
- Width: 750 and 1000

Options

The framework can be equipped with height adjustment cylinders (travel 30 mm, from 825 mm to 855 mm for the fixed height workbench, excluding workbench top) or a set of four 100 mm castors, two of them braked, in which case the maximum permissible load is 300 kg.



Assembly

- Quick and easy assembly
- Workbench supplied in kit form
- Assembly available on request

LABELS

Workbenches tops bear the PEFC label.

The maximum permissible load for the SI with mechanical height adjustment is 1000 kg.

In compliance with standard XPD 65762.





CHARACTERISTICS OF THE METAL FRAMEWORK OF THE SI WORKBENCH WITH HAND CRANK HEIGHT ADJUSTMENT



SI bench with height adjustment by crank

The frame consists of a structure of formed sheet steel thickness 25/10.

The legs are formed into 42x80x42 mm U sections and welded, the horizontal cross-members are formed into 40x60x40 mm U sections.



The SI workbench version with height adjustment by crank enables adjustment to exactly the desired height. A set of 4 hydraulic cylinders raise the frame and workbench-top assembly above the base framework. The principle provides great strength at all heights.

The cylinders are controlled by a folding crank handle with a lever length of 125 mm. Each full turn of the crank is equivalent to 5 mm travel. The adjustment range extends from 750 to 1020 for the frame, excluding the thickness of the workbench top.



Matching framework to top

The frame of the SI workbench can be fitted with a workbench top in 40 or 24 mm beech multiplex, 40 or 30 mm high heat-resistance laminated, 30 mm ESD laminated, 38 or 28 mm melamine, 40 mm MDF with HPL coat, 40 mm anti-shock Taralay or 45 mm multiplex (40 mm) with PE cover (5 mm).

The workbench top is fixed to the frame with TH 6x25 hexagon-head sleeper screws and can be positioned flush or centred depending the user's needs.



Dimensions of the workstations

- Length: 750 (W.750 only), 1000, 1200, 1500, 1800, 2000 and 2400
- Width: 750 and 1000

Options

The framework can be equipped with height adjustment cylinders (travel 30 mm, from 825 mm to 855 mm, excluding workbench top) or a set of four 100 mm castors, two of them braked.



Assembly

- Workbench supplied assembled

LABELS

Workbenches tops bear the PEFC label. The maximum permissible load for the SI with mechanical height adjustment is 300 kg. In compliance with standard XPD 65762.





CHARACTERISTICS OF THE METAL FRAMEWORK OF THE SI WORKBENCH WITH ELECTRIC HEIGHT ADJUSTMENT



SI frame with electric height adjustment

The frame consists of a structure of formed sheet steel thickness 25/10.

The legs are made of formed 62x87x62 mm U section.

The SI workbenche version with electric height adjustment enables adjustment to exactly the desired height. A set of 4 electric columns raise the top-frame and workbench-top assembly above the base framework. A control box is located under the workbench top. The adjustment range extends from 700 to 1100 for the frame, excluding the thickness of the workbench top.

Max. speed unladen: 38 mm/s



Electricity

A control box is located under the workbench top. The power supply of this box is 230 V, 50 Hz. It is ultra-compact and light in weight. The control box cable is 3200 mm long.



Remote control

Memory to store four positions, a screen to guide the user and a reminder system with a luminous strip (green or orange) to encourage the operator to adapt his settings. The remote control operates by simply pushing in the desired direction, rendering it very intuitive in use.

The remote control is discreet and modern in design with a glossy surface and integral display.

Notifications can be displayed on computers and smartphones using Bluetooth communication after downloading the application. This remote control is supplied with a 1700 mm cable and RJ45 plug.



Matching framework to top:

The frame of the SI workbench can be fitted with a workbench top in 40 or 24 mm beech multiplex, 40 or 30 mm high heat-resistance laminated, 30 mm ESD laminated, 38 or 28 mm melamine, 40 mm MDF with HPL coat, 40 mm anti-shock Taralay or 45 mm multiplex (40 mm) with PE cover (5 mm).

The workbench top is fixed to the frame with TH 6x25 hexagon-head sleeper screws and can be positioned flush or centred depending the user's needs.



Dimensions of the workstations

- Length: 750 (W.750 only), 1000, 1200, 1500, 1800, 2000 and 2400
- Width: 750 and 1000

Options

The SI electric workbench can be fitted with the following drawers: 1xH150, 2xH75, 2xH150, 4xH75, 3xH100, 2xH75 + 1xH150, 1xH75 + 1xH100 + 1xH125, 1xH100 + 1xH200, 1xH300.

The framework can be equipped with height adjustment cylinders (travel 30 mm, from 825 mm to 855 mm, excluding workbench top) or a set of four 100 mm castors, two of them braked.



Assembly

- Quick and easy assembly
- Workbench supplied in kit form
- Assembly available on request

LABELS

Workbenches tops bear the PEFC label. The maximum permissible load for the SI with mechanical height adjustment is 300 kg. In compliance with standard XPD 65762.





ACCESSORIES



PERFORATED REAR PANELS
to be fixed between the uprights
of support pillars
L. 635 / 865 / 1300 mm - H. 375 mm



**NOTICE-BOARD PANELS,
MAGNETIC**
L. 635 / 865 / 1300 mm
H. 450 mm



SUPPORT PILLARS
Height 1200 with
cross-members for workbench
L. 750 / 1000 / 1200 / 1500 /
1800 / 2000 mm (2 or 3 uprights)



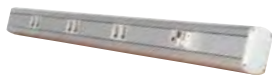
**ELECTRIC SUPPLY STRIP
WITH SWITCH**
L. 440 / 640 / 865 / 870 / 1300



LED WORKBENCH LIGHT
Switch and dimmer
L. 690 / 920 / 1355 mm - W. 230 mm
H. 50 mm



EXTRA LED TUBE LIGHT
Fixes magnetically under shelf
or on upright, waterproof
L. 620 / 670 mm



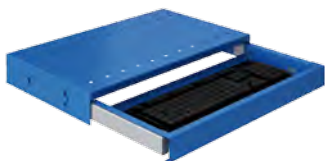
INCLINED ELECTRIC SUPPLY STRIP
Without switch
L. 1200 / 1500 / 1800 / 2000 mm



TROLLEYS



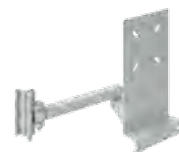
**FIXING PROFILES FOR LED LIGHTING
WITH RAIL FOR TROLLEYS**
L. 635 / 865 / 1300 / 1530 / 1760



**SLIDING KEYBOARD SUPPORT
+ MOUSE TRAY**
L. 585 mm - W. 330 mm - H. 80 mm



**CPU SUPPORT, ADJUSTABLE AND WITH
SECURITY HASP**
L. 140/190mm - W. 350/498mm - H. 464 mm



MONITOR SUPPORT ARM
up to 22" twin arms
L. 250 - W. 180 mm



PAPER TOWEL DISPENSER
L. 380 - W. 270 mm



SHELF DIVIDERS
W. 250 / 350 / 450 mm - H. 190 mm



**KEYBOARD SUPPORT
FOR SCREEN SUPPORT**
L. 560 mm - W. 200 mm



LABEL DISPENSER
L. 400 mm



WRAPPING PAPER DISPENSER
to be fixed between uprights
L. 635 / 865 / 1300 mm



WRAPPING PAPER CUTTER
with ergonomic handle
L. 635 / 865 / 1300 mm



SHELF HEIGHT EXTENSION
with both sides usable as cable ducts
L. 1200 / 1500 / 1800 / 2000 mm



**INTERMEDIATE SHELF
FOR SHELF HEIGHT EXTENSION**
L. 1200 / 1500 / 1800 / 2000 mm



**PERFORATED BACK PANEL
FOR SHELF HEIGHT EXTENSION**
L. 1200 / 1500 / 1800 / 2000 mm



UPPER PERFORATED BACK PANEL
HEIGHT 585 MM

with two uprights for workbench
(clip kits sold separately)

L. 1200 / 1500 / 1800 / 2000 mm



TAMBOUR CUPBOARD FOR
BACK OF WORKBENCH TOP

W250 x H800

L. 1500 / 2000 mm



DRAWER UNIT (UP TO H530 MM)
DRAWNER CABINETS (H800 MM)

For SI fixed-height workbenches only



TILTING SHELVES

to be fixed between the uprights
of support pillars

L. 865 / 1300 mm - W. 250 mm

L. 865 / 1300 mm - W. 350 mm

L. 865 / 1300 mm - W. 450 mm



PIVOTING TRAY

on jointed arm

L. 610 / 310 - W. 410 mm

L. 560 - W. 200 mm



SUPPORT

10 A4 DOCUMENT HOLDERS



BOTTLE
HOLDER

L. 100 - W. 100 mm
- H. 130 mm



RACK
FOR FLASKS

L. 630 - W. 110 mm
- H. 120 mm

ADJUSTABLE TILTING SHELF

to be fixed between the uprights of support pillars

L. 635 / 865 / 1300 mm - W. 250 mm

L. 635 / 865 / 1300 mm - W. 350 mm

L. 635 / 865 / 1300 mm - W. 450 mm



MAGNETIC TOOL
HOLDERS

capacity up to 6kg

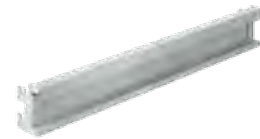
L. 35 / 200 mm



MINI-RAIL FOR MOUNTING
OPEN-FRONT BINS

on perforated panel

L. 75 / 145 mm



SUPPORT RAIL FOR OPEN-FRONT BINS

to be fixed between the uprights
of support pillars

L. 635 / 865 / 1300 mm



PIVOTING FRAME + 2 RAILS L. 635

L. 700 mm - H. 460 mm



EUROPE BINS

L. 600 - W. 400 - H. 200 mm

L. 400 - W. 300 - H. 200 mm

L. 600 - W. 400 - H. 300 mm



SEPARATE FOOT REST

Height adjustable from 70 to 250 mm

L. 500 - W. 320 mm



TURNTABLES

on slewing ring ball bearing

D. 380 / 600 mm



OPEN-FRONT BINS

1L - 3,5L - 10L



ANTI-FATIGUE MAT

in non-slip rubber

L. 1350 - W. 1000 - Tk. 16 mm



ELECTROSTATIC DISCHARGE
PROTECTION KIT



V10 CYLINDERS



R100 CASTORS



WASTE BAG SUPPORT

Sliding

L. 431 mm - W. 307 mm

ADVANTAGES OF THE SI RANGE OF WORKBENCHES

FIXED HEIGHT – ADJUSTABLE HEIGHT WITH LOCKING SCREWS, BY CRANK OR ELECTRICALLY

STRENGTH



ERGONOMIC



SAFETY

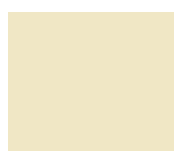


ADAPTABILITY



COMPLIES WITH THE REGULATIONS LAID DOWN IN EUROPEAN DIRECTIVE 2006/42/EC

SI WORKBENCH COLOURS



RAL 1015 BS



RAL 1018 JS



RAL 2004 OG



RAL 3000 RV



RAL 5002 BM



RAL 5010 BP



RAL 5015 BI



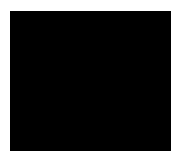
RAL 7004 GM



RAL 7016 GA



RAL 7035 GC



RAL 9005 NN



RAL 9010 BB

Specify colours Frame



GUARANTEE :

Our equipment carries a 5-year parts and labour guarantee covering all manufacturing defects in normal use.



FRENCH MANUFACTURER

SOFAME
The industrial furniture experts

www.sofame.fr