

PTH WORKBENCHES

FIXED HEIGHT / HEIGHT ADJUSTMENT WITH LOCKING SCREWS



STRENGTH - SAFETY - QUALITY/PRICE RATIO

CHARACTERISTICS OF THE METAL FRAMEWORK



PTH fixed-height frame

The frame consists of a structure of tubular steel thickness 20/10 and formed sheet steel thickness 25/10. The legs are made from 40 x 40 section welded tube, the horizontal cross-members formed into a U section 40 x 60 x 40 mm. The 3 cross-members join the ladders: two at the top under the workbench-top, one at the bottom.



The framework is finished in epoxy powder paint polymerized in a kiln at 180°C.

The design is such that the assembly of the different metal components shows no external screws or bolts, thus providing the user with better protection against injury.

The tubes of the legs are finished with plastic tips to prevent damage to flooring. They can be equipped with adjusting cylinders or castors on option.

PTH frame with locking screws height adjustment

The PTH workbench with sliding adjustment enables adjustment of the working height. The adjustment range extends from 740 to 1020 mm for the frame, excluding the thickness of the workbench top.

Holes drilled 20 mm apart facilitate height adjustment and provide points of reference.

The sliding adjustment system is easy to use with 4 screws and no need for dismantling.



Matching framework to top

The frame of the SI workbench can be fitted with a workbench top in 40 or 24 mm beech multiplex, 40 or 30 mm high heat-resistance laminated, 30 mm ESD laminated, 38 or 28 mm melamine, 40 mm MDF with HPL coat, 40 mm anti-shock Taralay or 45 mm multiplex (40 mm) with PE cover (5 mm).

The workbench top is fixed to the frame with TH 5x20 cross-head sleeper screws and can be positioned flush or centred depending the user's needs.



Dimensions of the workstations

- Length: 750 (W.750 only), 1000, 1200, 1500, 1800, 2000 and 2400 mm
- Width: 750 and 1000 mm



Assembly

- Quick and easy assembly
- Workbench supplied in kit form
- Assembly available on request

LABELS

The PTH fixed-height workbench bears GS label, the NF Environnement (environment) and NF Mobilier technique (technical furniture) quality labels. Workbenches tops bear the PEFC label. The certified maximum permissible load for the PTH fixed height workbench is 500 kg. In compliance with standard XPD 65762.









ACCESSORIES



PERFORATED REAR PANELS
to be fixed between the uprights
of support pillars
L. 635 / 865 / 1300 mm - H. 375 mm



**NOTICE-BOARD PANELS,
MAGNETIC**
L. 635 / 865 / 1300 mm
H. 450 mm



SUPPORT PILLARS
height 1200 with cross-members for workbench
L. 750 / 1000 / 1200 / 1500 /
1800 / 2000 mm (2 or 3 uprights)



**ELECTRIC SUPPLY STRIP
WITH SWITCH**
L. 440 / 640 / 865 / 870 / 1300



LED WORKBENCH LIGHT
Switch and dimmer
L. 690 / 920 / 1355 mm - W. 230 mm
H. 50 mm



EXTRA LED TUBE LIGHT
Fixes magnetically under shelf
or on upright, waterproof
L. 620 / 670 mm



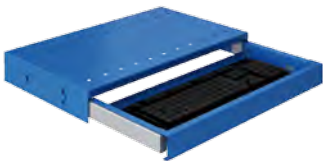
INCLINED ELECTRIC SUPPLY STRIP
without switch
L. 1200 / 1500 / 1800 / 2000 mm



TROLLEYS



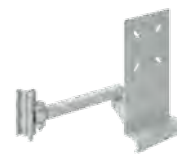
**FIXING PROFILES FOR LED LIGHTING
WITH RAIL FOR TROLLEYS**
L. 635 / 865 / 1300 / 1530 / 1760



**SLIDING KEYBOARD SUPPORT
+ MOUSE TRAY**
L. 585 mm - W. 330 mm - H. 80 mm



**CPU SUPPORT, ADJUSTABLE
AND WITH SECURITY HASP**
L. 140/190 mm - W. 350/498 mm
H. 464 mm



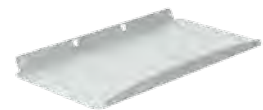
MONITOR SUPPORT ARM
up to 22" twin arms
L. 250 - W. 180 mm



PAPER TOWEL DISPENSER
L. 380 - W. 270 mm



SHELF DIVIDERS
W. 250 / 350 / 450 mm - H. 190 mm



**KEYBOARD SUPPORT
FOR SCREEN BRACKET**
L. 560 mm - W. 200 mm



LABEL DISPENSER
L. 400 mm



WRAPPING PAPER DISPENSER
to be fixed between uprights
L. 635 / 865 / 1300 mm



WRAPPING PAPER CUTTER
with ergonomic handle
L. 635 / 865 / 1300 mm



SHELF HEIGHT EXTENSION
with both sides usable as cable ducts
L. 1200 / 1500 / 1800 / 2000 mm



**INTERMEDIATE SHELF
FOR SHELF HEIGHT EXTENSION**
L. 1200 / 1500 / 1800 / 2000 mm



**PERFORATED BACK PANEL
FOR SHELF HEIGHT EXTENSION**
L. 1200 / 1500 / 1800 / 2000 mm



UPPER PERFORATED BACK PANEL
HEIGHT 585 MM
 with two uprights for workbench
 (clip kits sold separately)
 L. 1200 / 1500 / 1800 / 2000 mm



TAMBOUR CUPBOARD FOR
BACK OF WORKBENCH TOP
W250 x H800
 L. 1500 / 2000 mm



DRAWER BLOCK
 From 1 to 6 drawers



TILTING SHELVES TO BE FIXED
between the uprights
of support pillars
 L. 865 / 1300 mm - W. 250 mm
 L. 865 / 1300 mm - W. 350 mm
 L. 865 / 1300 mm - W. 450 mm



PIVOTING TRAY
on jointed arm
 L. 610 / 310 mm - W. 410 mm
 L. 560 - W. 200 mm



SUPPORT
10 A4 DOCUMENT HOLDERS

ADJUSTABLE TILTING SHELF
to be fixed between the uprights of support pillars
 L. 635 / 865 / 1300 mm - W. 250 mm
 L. 635 / 865 / 1300 mm - W. 350 mm
 L. 635 / 865 / 1300 mm - W. 450 mm



BOTTLE HOLDER
 L. 100 - W. 100 mm
 - H. 130 mm



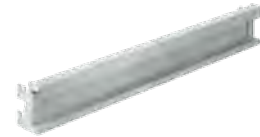
RACK
FOR FLASKS
 L. 630 - W. 110 mm
 - H. 120 mm



MAGNETIC TOOL
HOLDERS
 capacity up to 6 kg
 L. 35 / 200 mm



MINI-RAIL FOR MOUNTING
OPEN-FRONT BINS
on perforated panel
 L. 75 / 145 mm



SUPPORT RAIL FOR OPEN-FRONT BINS
to be fixed between the uprights
of support pillars
 L. 635 / 865 / 1300 mm



PIVOTING FRAME + 2 RAILS L. 635
 L. 700 mm - H. 460 mm



EUROPE BINS
 L. 600 - W. 400 - H. 200 mm
 L. 400 - W. 300 - H. 200 mm
 L. 600 - W. 400 - H. 300 mm



SEPARATE FOOT REST
Height adjustable from 70 to 250 mm
 L. 500 - W. 320 mm



TURNTABLES
on slewing ring ball bearing
 D. 380 / 600 mm



OPEN-FRONT
BINS
 1L - 3,5L - 10L



ANTI-FATIGUE MAT
in non-slip rubber
 L. 1350 - W. 1000 mm - Tk 16 mm



ELECTROSTATIC DISCHARGE
PROTECTION KIT



V10 CYLINDERS



R100 CASTORS



WASTE BAG SUPPORT
Sliding
 L. 431 mm - W. 307 mm

ADVANTAGES OF THE PTH RANGE OF WORKBENCHES

FIXED HEIGHT / ADJUSTABLE HEIGHT WITH LOCKING SCREWS

STRENGTH



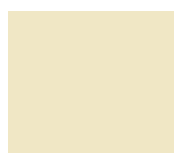
SAFETY



QUALITY/PRICE
RATIO



PTH WORKBENCH COLOURS



RAL 1015 BS



RAL 1018 JS



RAL 2004 OG



RAL 3000 RV



RAL 5002 BM



RAL 5010 BP



RAL 5015 BI



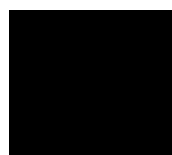
RAL 7004 GM



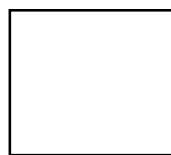
RAL 7016 GA



RAL 7035 GC



RAL 9005 NN



RAL 9010 BB

Specify colours Frame



GUARANTEE :

Our equipment carries a 5-year parts and labour guarantee covering all manufacturing defects in normal use.



FRENCH MANUFACTURER

 **SOFAME**
The industrial furniture experts

www.sofame.fr