

CATALOGUE 48H



SOFAME

The industrial furniture experts

Workstations & workbenches



Mobile trolleys



Storage units



Computer storage

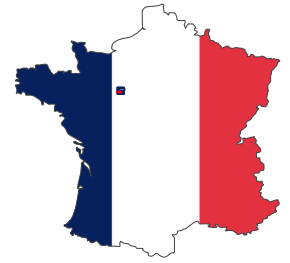


Seats & stools



Shipment in 48-hours

DELIVERIES IN 48-HOURS BY SOFAME : MAKE YOUR EQUIPMENT IN 48 HOURS



What is it?

- **A dedicated catalogue with 100% products available within 48-Hours**
- **A warehouse of 10 000m³**
- More than 1000 references of finished products in stock

The 48H-catalogue is a complete and coherent offer for our clients in industrial furniture: workbenches, trolleys, storage units, IT cabinets, seats as well as a large range of accessories.

In this new catalogue you will find in addition to the previous version the mechanically and electrically height-adjustable workbenches which is currently an exclusivity on the market!

All those products are proposed in 2 colours: Industrial Blue and Dark Grey for a coherent aesthetics in the industry.

A wide range of worktops is available to respond to the various applications: melamine 19, 28 and 38mm, laminated 30 and 40mm, multiplex 24 and 40mm.

The quality is signed by SOFAME: They comply with NF environment, NF technical furniture, PEFC and GS certifications and offer a 5-years warranty (2-years for the seats).

Both our production site and warehouse are certified ISO 9001 which means a permanent improvement's policy.

We have tried to make the presentation simple and clear to facilitate the choice.

Our commercial team remains at your disposal to help you in your selection and is able to reply to all question you may have.

Do not hesitate to visit our new website www.sofame.fr where you can find many additional information.

- SOFAME

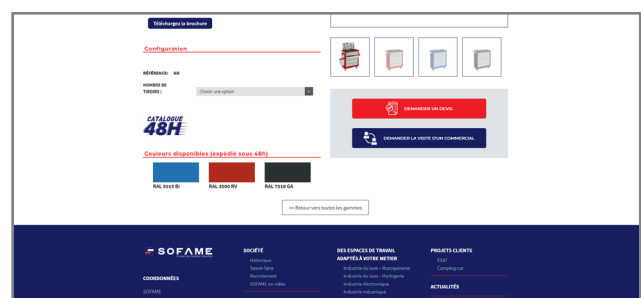
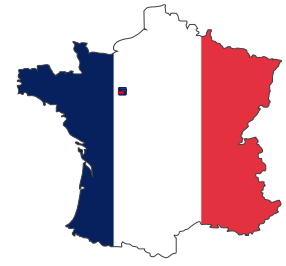


TABLE OF CONTENTS

■	Company presentation	P.2
■	Workstations and workbenches	P.6
■	Mobile trolleys	P.42
■	Storage units	P.52
■	Computer storage	P.66
■	Seats	P.70
■	Terms and sales conditions	P.80

Shipment in 48-Hours

INTRODUCTION TO THE COMPANY



SOFAME created in 1986

is the leader in France in industrial furniture and its know-how is more particularly recognized for the workbenches and workstations.

Located in Sargé-Lès-Le-Mans, in Sarthe, SOFAME is implemented on a 7000m² site incl. 5000m² for the production and 1500m² surface area for logistics and storage. 48 involved and passionate people are working for SOFAME.

SOFAME KNOW-HOW

SOFAME converts the plates, the reels and the tubes of steel and the wooden panels. Products are computer-assisted designed thanks to the SOLIDWORKS software.

The industrial tool is at the cutting edge of the industrial furniture industry (numerically controlled laser cutting and punching line for thin steel plates, numerically controlled folding presses, MIG welding robot, Epoxy-powder spraying booth, numerically controlled machining centre for cutting, drilling, routing and fitting edge bands.

SOFAME constantly monitors market and technological trends with a view to the development of the factories of the future. The company actively participates in work groups within the professional organisation (CETIM, FCBA, etc.) specialised in ergonomics, technologies and trade-related applications.

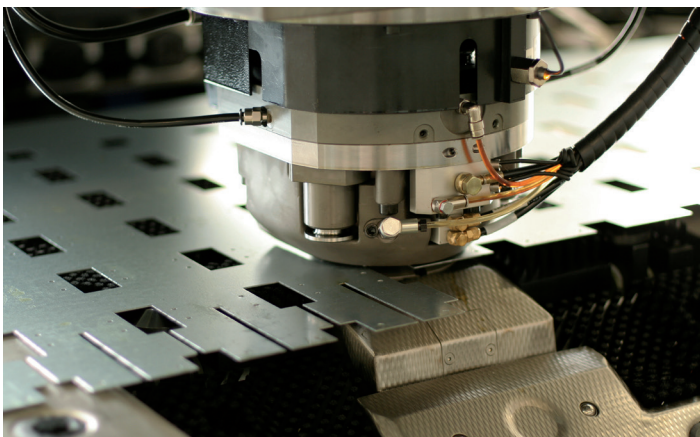
This monitoring process and work participation enables SOFAME to not only meet the needs and expectations of its customers, but even to anticipate them.

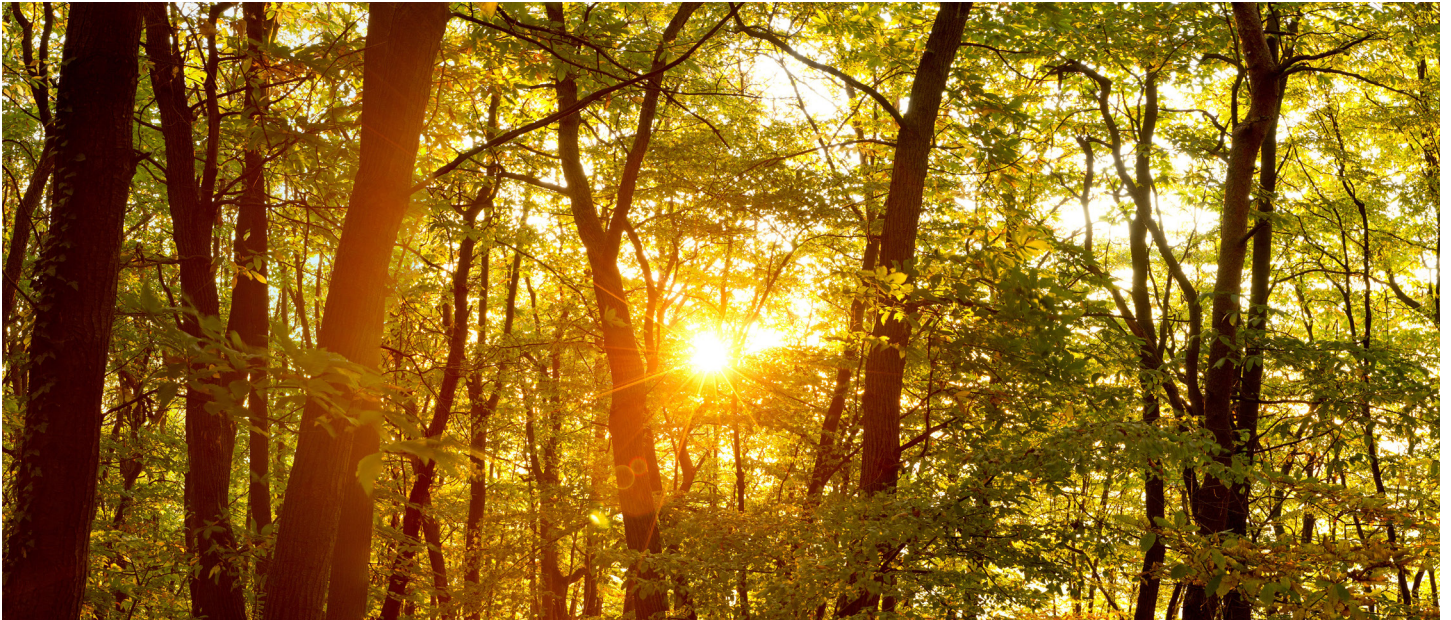
COMMERCIAL SERVICES AND PRESENCE

SOFAME is the only manufacturer on the national market proposing delivery of such a wide range of workstations, sto-

rage cabinets, trolleys, seats and stools in such a short time through its 48-Hours catalogue. The SOFAME sales team, composed of 5 technical-sales representative for the entire national territory and an export sales manager, is able to ensure our customers of a local presence. They have all received in-depth training to enable analysis of customer requirements, as well as trade-specific applications.

The skills of the design office technicians, the capacity and processing power of the SOLIDWORKS CAD software package, the flexibility and reactivity of the industrial tools, as well as the versatility of the production operators enable SOFAME to propose products perfectly adapted to the needs, expectations, and constraints of the users, SOFAME always pay a lot of attention to aesthetics, functionality, ergonomics as well as to find the perfect value-for-money combination. Transport is provided by specialised haulage companies who have been trusted partners of SOFAME for many years and thus guarantee quality shipping conditions. SOFAME can arrange to have assembly carried out by a team of specialised and highly qualified professional assembly fitters. This service is proposed in accordance with the specificity of each layout and is systematically accompanied by a price quotation.





SOFAME is at the cutting-edge in terms of certifications and labels for its products and processes.

Wishing to go still further in order to guarantee its customers products and services of the highest quality, SOFAME has initiated a continuous improvement process which was acknowledged in December 2015 with the awarding of ISO 9001 certification version 2015.

THE KNOW-HOW SOFAME

SOFAME products are TECHNICAL FURNITURE STANDARD NF (security, hygiene, robustness, durability) and ENVIRONMENT STANDARD NF (impact on the environment throughout its entire life cycle), GS (quality/security), and PEFC (wooden panels come only from under- controlled forests) certified.

SOFAME is also certified ISO 9001 version 2015 which means a permanent improvement's policy. Respect of these criteria is confirmed with an inspection audit. These criteria are regularly revised as technologies evolve.





LOGISTICS AND STORAGE

- 1,500m² surface area under a 7m high roof equals 10,000m³
- 1,000m² of semi-heavy shelving
- 1 forklift truck
- 1 pallet handling truck
- 1 reception and shipping bay for articulated trucks

SOFAME LOGISTICS ORGANIZATION

Despite they are independent and autonomous in their own operation both production site and warehouse are located at the same place. This eases the coordination and enables an excellent reactivity. Selected products among the 48-Hours catalogue are our best sellers with a sales history and reliable statistics.

48-Hours service

SOFAME has selected a wide range of industrial furniture to enable the coherent development of a manufacturing or a logistics area: workbenches, workstations, storage units, mobile trolleys, seats. A complete range of around 1000 items in stock, available either in industrial blue/light grey or in dark grey/light grey which are the most requested colours in the industry. Those products can be shipped within 48 Hours once order has been confirmed until a quantity of 5 pieces by item.

48H

QUALITY IS OUR LEITMOTIV

The selected products among the 48-Hours catalogue come from the general catalogue. They all offer the same criteria of quality, are also certified.

- **NF TECHNICAL FURNITURE** : certifies the security, the hygiene, the ergonomics, the furniture robustness et the durability.
- **NF ENVIRONMENT**: warranties the limitation of the impact on the environment throughout their entire life cycle.
- The **GS LABEL** proves the company's commitment in the security and the products quality and is the guarantee that the products have been certified by an independent inspection audit.
- **ISO 9001 VERSION 2015** is a certification that shows the regularity in the quality processes through a permanent improvement policy.





WORKBENCHES AND WORKSTATIONS

SI FIXED WORKBENCHES WITHOUT AND WITH DRAWERS UNITS	12
SI FIXED WORKBENCHES WITH DOOR UNITS	15
SI HEIGHT-ADJUSTABLE WORKBENCHES	17
PTH FIXED WITHOUT OR WITH DRAWERS UNITS	24
PTH HEIGHT-ADJUSTABLE WORKBENCHES	27
REGULOG TABLES	33
TPL TABLES	34
ECOLOG WORKSTATIONS	35
ACCESSORIES FOR WORKBENCHES	36



SI WORKBENCHES

FEATURES OF THE METAL STRUCTURE

Frame of the SI fixed 800MM high (excluding worktop thickness):

The frame is composed of a folded steel tube structure, thickness 25/10th.

The frame is finished with epoxy powder paint, oven polymerised at 180°C

The product is designed in such a way that no screws or bolts are visible after assembly of metal elements, thus providing greater protection of users against possible injury.

Worktops: Multiplex 40 or 24mm, RESITOP 40 or 30mm, Melamine 38 or 28mm.

Dimensions in mm (LxD): 2000x750, 1800x750, 1500x750, 1200x750



Frame of the SI mechanically height-adjustable:

Conception, finishing and available dimensions are the same than for the fixed version (see above)

The mechanically height-adjustable version is foreseen with a notch rail in steps of 40mm and clamping in place with screws and bolts. The setting stroke ranges from 740 to 1020 mm for the frame excluding the worktop thickness.



740 mm



1020 mm



Frame of the SI electrically height-adjustable:

Conception, finishing and available dimensions are the same than for the fixed version (see above)

The electrically height-adjustable version of the SI workbench enables accurate adjustment to the exact working height required.

A set of 4 electrically controlled columns are used to raise the frame and worktop assembly above the structure. A control box is located under the worktop.

Supply voltage 230V, 50Hz, cable length 3.2m. The setting stroke ranges from 700 to 1100 mm for the frame excluding the worktop thickness. Maximum off-load speed 38mm/s. The remote-control includes a height indicator with programming of 3 pre-defined positions.



700 mm



1100 mm



OPTIONS

On the fixed version, one or both ladders may be replaced by a floor-based chest which supports the worktop as well as the upper and lower cross-members. This chest has an overall width of 430mm and overall depth of 600mm. The legs may be equipped with height-adjustment screw-jacks (stroke 30mm from 825mm to 855 mm for the fixed frame without worktop) or a set of 4 castor rollers, diameter 100mm, 2 of which with brake.

The SI workbench may be fitted, in the lower section and supported by the legs or ladder and the horizontal cross-member at the same time, with a shelf.

ACCESSORIES

The worktop may be fitted, in the upper section, with uprights designed to receive all accessories (shelves, rails, perforated backboards, supports etc.) **See Page 36.**



PTH WORKBENCHES

FEATURES OF THE METAL STRUCTURE

Frame of the PTH fixed 800MM high (excluding worktop thickness):

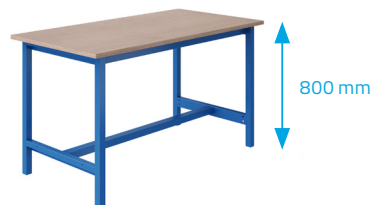
Frame composed of a steel tube structure, thickness 20/10th and folded sheet steel, thickness 25/10th.

The feet and ladders are made of welded tubes with a section of 40x40mm and the horizontal cross-members are made of sheet steel folded in a U section of 40x60x40 mm. The frame is finished with epoxy powder paint, oven polymerised at 180°C

The product is designed in such a way that no screws or bolts are visible after assembly of metal elements, thus providing greater protection of users against possible injury. The legs and ladder tubes are foreseen with plastic end caps to prevent floor indentation.

Worktops: Multiplex 40 or 24mm, RESITOP 40 or 30mm, Melamine 38, 28 or 19mm.

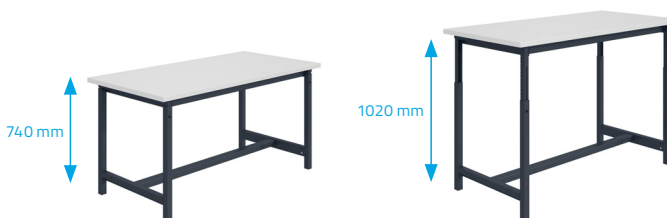
Dimensions in mm (LxD): 2000x750, 1800x750, 1500x750, 1200x750



Frame of the mechanically height-adjustable PTH :

The setting stroke ranges from 740 to 1020 mm for the frame excluding the worktop thickness.

The notches spaced every 20mm enable easy height adjustment, as well as identification. This sliding adjustment system is easy to use thanks to the 4 screws which do not require removal.



OPTIONS

Drawers units

The legs may be equipped with height-adjustment jacks (stroke 30mm) or a set of 4 castor rollers, diameter 100mm, 2 of which with brake. The PTH workbench may be fitted with a melamine worktop.

ACCESSORIES

The worktop may be fitted, in the upper section, with uprights designed to receive all accessories (shelves, rails, lighting support, perforated backboards, supports and various dispenser reels, etc.) placing all tools required by the user at hand under optimum ergonomic conditions. **See Page 36.**

REGULOG TABLES

FEATURES OF THE METAL STRUCTURE

The electrically height adjustable REGULOG table rests on 2 sheet metal bases, thickness 40/10th and tube 25 x 25 each equipped with 2 height setting jacks. These two bases support the 2 electrically-controlled telescopic lift columns used by the operator for precise height adjustment. The sheet metal crossmember, thickness 12/10th, located between the two columns ensure excellent frame rigidity. A control-box is located under the worktop. The height adjustment range is from 700 to 1100mm excluding the worktop thickness.

Worktops: Multiplex 24mm, Melamine 28 or 19mm.

Dimensions in mm (LxD): 2000x750, 1800x750, 1500x750, 1200x750



OPTIONS

Retractable keyboard stand, CPU stand, 1 drawer unit, rubbish bin support, castors.

ACCESSORIES

The worktop may be fitted, in the upper section, with uprights designed to receive all accessories (shelves, rails, perforated backboards, supports etc.) **See Page 36.**



TPL TABLES

FEATURES OF THE METAL STRUCTURE

Frame of the TPL table 800MM high (excluding worktop thickness):

Frame composed of a steel tube structure, thickness 20/10th and folded sheet steel, thickness 25/10th. The feet and ladders are made of welded tubes with a section of 40x2mm and the upper horizontal cross-members are made of sheet steel folded in a U section of 40x60x40 mm.

The frame is finished with epoxy powder paint, oven polymerised at 180°C.

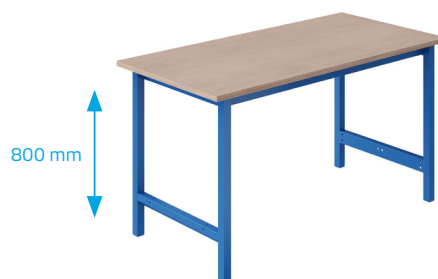
The product is designed in such a way that no screws or bolts are visible after assembly of metal elements, thus providing greater protection of users against possible injury. The legs and ladder tubes are foreseen with plastic end caps to prevent floor indentation.

Worktops : Multiplex 24mm or Melamine 19mm

Dimensions in mm (LxP) : 2 000x750, 1 500x750, 1 200x750.

ACCESSORIES

The worktop may be fitted, in the upper section, with uprights designed to receive all accessories (shelves, rails, lighting support, perforated backboards, supports and various dispenser reels, etc). **See Page 36.**



ECOLOG WORKSTATIONS

FEATURES OF THE METAL STRUCTURE

The vertical uprights have a height of 1950mm and are made of steel tube 60x30mm, thickness 20/10th, perforated on all 4 sides. On the 60mm wide side, the perforations are square 10x10mm and in steps of 50mm. On the 30mm wide front and rear sides, the perforations are rectangular 30x10mm and also in steps of 50mm. The worktop support arms are made of steel tube, cross-section 35x35mm. They are height adjustable over the entire height of the uprights. The horizontal bases are made of steel tube 35x35mm, thickness 20/10th and are equipped in the front section with height-adjustment screw jacks with a stroke of 30mm to compensate for floor irregularities.

The frame is finished with epoxy powder paint, oven polymerised at 180°C.

ACCESSORIES

The worktop can receive modular accessories such as shelves, rails, lighting supported fixed in the perforations. **See Page 36.**

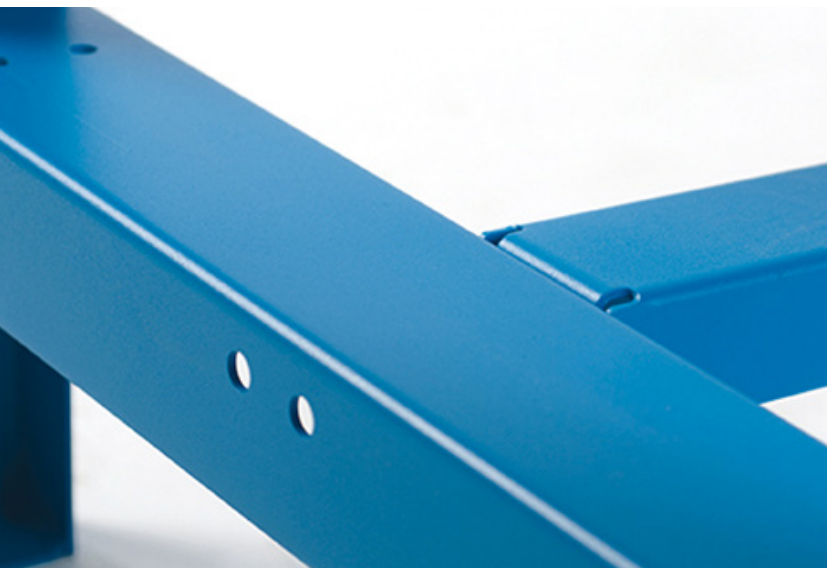


Height adjustable
worktop by 50mm
intervals



THE QUALITY :

THE SOLUTION FOR ALL YOUR PROJECTS



ROBUSTNESS



SECURITY



FUNCTIONALITY

WORKBENCHES



SI fixed without and with drawers units

48H

ACCESSORIES
SEE PAGE 36



SI workbench with 40mm plywood worktop, height 840mm

Frame color : ● Industrial Blue RAL 5015 ● Anthracite Grey RAL 7016
Color Code : BI GA

W.	D.	Fixed without drawer		1 cabinet 1 drawer H150		1 unit with 2 drawers H150		1 block 3 drawers H150	
		Reference	Color Code	Reference	Color Code	Reference	Color Code	Reference	Color Code
1200	750	W 01 001 0003	Bl or GA	W 01 001 0647	Bl or GA	W 01 001 0671	Bl or GA	W 01 001 0695	Bl or GA
1500	750	W 01 001 0004	Bl or GA	W 01 001 0648	Bl or GA	W 01 001 0672	Bl or GA	W 01 001 0696	Bl or GA
1800	750	W 01 001 0005	Bl or GA	W 01 001 0649	Bl or GA	W 01 001 0673	Bl or GA	W 01 001 0697	Bl or GA
2000	750	W 01 001 0006	Bl or GA	W 01 001 0650	Bl or GA	W 01 001 0674	Bl or GA	W 01 001 0698	Bl or GA



SI workbench with 24mm plywood worktop, height 824mm

Frame color : ● Industrial Blue RAL 5015 ● Anthracite Grey RAL 7016
Color Code : BI GA

W.	D.	Fixed without drawer		1 cabinet 1 drawer H150		1 unit with 2 drawers H150		1 block 3 drawers H150	
		Reference	Color Code	Reference	Color Code	Reference	Color Code	Reference	Color Code
1200	750	W 01 001 0055	Bl or GA	W 01 001 0651	Bl or GA	W 01 001 0675	Bl or GA	W 01 001 0699	Bl or GA
1500	750	W 01 001 0056	Bl or GA	W 01 001 0652	Bl or GA	W 01 001 0676	Bl or GA	W 01 001 0700	Bl or GA
1800	750	W 01 001 0057	Bl or GA	W 01 001 0653	Bl or GA	W 01 001 0677	Bl or GA	W 01 001 0701	Bl or GA
2000	750	W 01 001 0058	Bl or GA	W 01 001 0654	Bl or GA	W 01 001 0678	Bl or GA	W 01 001 0702	Bl or GA

*Drawers units can be fixed either on right or left side.
They come in light grey (GC) RAL 7035*

See technical features in page 8



WORKBENCHES

SI fixed without and with drawers units



SI workbench with 40mm RESITOP high thermal resistance laminate top, straight edges, height 840mm

Frame color : ● Industrial Blue RAL 5015 ● Anthracite Grey RAL 7016
 Color Code : BI GA

W.	D.	Fixed without drawer		1 cabinet 1 drawer H150		1 unit with 2 drawers H150		1 block 3 drawers H150	
		Reference	Color Code	Reference	Color Code	Reference	Color Code	Reference	Color Code
1200	750	W 01 001 0159	BI or GA	W 01 001 0655	BI or GA	W 01 001 0679	BI or GA	W 01 001 0703	BI or GA
1500	750	W 01 001 0160	BI or GA	W 01 001 0656	BI or GA	W 01 001 0680	BI or GA	W 01 001 0704	BI or GA
1800	750	W 01 001 0161	BI or GA	W 01 001 0657	BI or GA	W 01 001 0681	BI or GA	W 01 001 0705	BI or GA
2000	750	W 01 001 0162	BI or GA	W 01 001 0658	BI or GA	W 01 001 0682	BI or GA	W 01 001 0706	BI or GA



SI workbench with 30mm RESITOP high thermal resistance laminate top, straight edges, height 830mm

Frame color : ● Industrial Blue RAL 5015 ● Anthracite Grey RAL 7016
 Color Code : BI GA

W.	D.	Fixed without drawer		1 cabinet 1 drawer H150		1 cabinet 2 drawer H150		1 cabinet 3 drawer H150	
		Reference	Color Code	Reference	Color Code	Reference	Color Code	Reference	Color Code
1200	750	W 01 001 0211	BI or GA	W 01 001 0659	BI or GA	W 01 001 0683	BI or GA	W 01 001 0707	BI or GA
1500	750	W 01 001 0212	BI or GA	W 01 001 0660	BI or GA	W 01 001 0684	BI or GA	W 01 001 0708	BI or GA
1800	750	W 01 001 0213	BI or GA	W 01 001 0661	BI or GA	W 01 001 0685	BI or GA	W 01 001 0709	BI or GA
2000	750	W 01 001 0214	BI or GA	W 01 001 0662	BI or GA	W 01 001 0686	BI or GA	W 01 001 0710	BI or GA

Drawers units can be fixed either on right or left side. They come in light grey (GC) RAL 7035

See technical features in page 8

WORKBENCHES



SI fixed without and with drawers units

48H

ACCESSORIES
SEE PAGE 36



SI workbench with 38 mm melamine worktop, straight edges, height 838 mm

Frame color : ● Industrial Blue RAL 5015 ● Anthracite Grey RAL 7016
Color Code : BI GA

W.	D.	Fixed without drawer				1 cabinet 1 drawer H150				1 unit with 2 drawers H150				1 block 3 drawers H150			
		Reference	Color Code			Reference	Color Code			Reference	Color Code			Reference	Color Code		
1200	750	W 01 001 0107	BI or GA			W 01 001 0663	BI or GA			W 01 001 0687	BI or GA			W 01 001 0711	BI or GA		
1500	750	W 01 001 0108	BI or GA			W 01 001 0664	BI or GA			W 01 001 0688	BI or GA			W 01 001 0712	BI or GA		
1800	750	W 01 001 0109	BI or GA			W 01 001 0665	BI or GA			W 01 001 0689	BI or GA			W 01 001 0713	BI or GA		
2000	750	W 01 001 0110	BI or GA			W 01 001 0666	BI or GA			W 01 001 0690	BI or GA			W 01 001 0714	BI or GA		



SI workbench with 28 mm laminated worktop, straight edges, height 828 mm

Frame color : ● Industrial Blue RAL 5015 ● Anthracite Grey RAL 7016
Color Code : BI GA

W.	D.	Fixed without drawer				1 cabinet 1 drawer H150				1 unit with 2 drawers H150				1 block 3 drawers H150			
		Reference	Color Code			Reference	Color Code			Reference	Color Code			Reference	Color Code		
1200	750	W 01 001 0597	BI or GA			W 01 001 0667	BI or GA			W 01 001 0691	BI or GA			W 01 001 0715	BI or GA		
1500	750	W 01 001 0598	BI or GA			W 01 001 0668	BI or GA			W 01 001 0692	BI or GA			W 01 001 0716	BI or GA		
1800	750	W 01 001 0599	BI or GA			W 01 001 0669	BI or GA			W 01 001 0693	BI or GA			W 01 001 0717	BI or GA		
2000	750	W 01 001 0600	BI or GA			W 01 001 0670	BI or GA			W 01 001 0694	BI or GA			W 01 001 0718	BI or GA		

Drawers units can be fixed either on right or left side.
They come in light grey (GC) RAL 7035

See technical features in page 8

ACCESSORIES
SEE PAGE 36



WORKBENCHES

SI fixed workbenches with door units



SI workbench with **40mm plywood worktop**, height 840mm

Frame color : Industrial Blue RAL 5015 Anthracite Grey RAL 7016
Color Code : **BI** **GA**

1 drawer H75 + 4 drawers H150

W.	D.	Reference	Color Code		
1200	750	W 01 001 0719	BI or GA		
1500	750	W 01 001 0720	BI or GA		
1800	750	W 01 001 0721	BI or GA		
2000	750	W 01 001 0722	BI or GA		



SI workbench with **24mm plywood worktop**, height 824mm

Frame color : Industrial Blue RAL 5015 Anthracite Grey RAL 7016
Color Code : **BI** **GA**

1 drawer H75 + 4 drawers H150

W.	D.	Reference	Color Code		
1200	750	W 01 001 0723	BI or GA		
1500	750	W 01 001 0724	BI or GA		
1800	750	W 01 001 0725	BI or GA		
2000	750	W 01 001 0726	BI or GA		



SI workbench with **40mm RESITOP high thermal resistance laminate top**, straight edges, height 840mm

Frame color : Industrial Blue RAL 5015 Anthracite Grey RAL 7016
Color Code : **BI** **GA**

1 drawer H75 + 4 drawers H150

W.	D.	Reference	Color Code		
1200	750	W 01 001 0727	BI or GA		
1500	750	W 01 001 0728	BI or GA		
1800	750	W 01 001 0729	BI or GA		
2000	750	W 01 001 0730	BI or GA		

The 5 drawers units can be fixed either on right or left side.
They come in light grey (GC) RAL 7035

See technical features in page 8

WORKBENCHES



SI fixed workbenches with door units

48H

ACCESSORIES
SEE PAGE 36



SI workbench with **30mm RESITOP** high thermal resistance **laminate** worktop, straight edges, height 830mm

Frame color : Industrial Blue RAL 5015 Anthracite Grey RAL 7016
Color Code : **BI** **GA**

1 drawer H75 + 4 drawers H150

W.	D.	Reference	Color Code		
1200	750	W 01 001 0731	BI or GA		
1500	750	W 01 001 0732	BI or GA		
1800	750	W 01 001 0733	BI or GA		
2000	750	W 01 001 0734	BI or GA		



SI workbench with **38 mm melamine** worktop, straight edges, height 838 mm

Frame color : Industrial Blue RAL 5015 Anthracite Grey RAL 7016
Color Code : **BI** **GA**

1 drawer H75 + 4 drawers H150

W.	D.	Reference	Color Code		
1200	750	W 01 001 0735	BI or GA		
1500	750	W 01 001 0736	BI or GA		
1800	750	W 01 001 0737	BI or GA		
2000	750	W 01 001 0738	BI or GA		



SI workbench with **28 mm laminated** worktop, straight edges, height 828 mm

Frame color : Industrial Blue RAL 5015 Anthracite Grey RAL 7016
Color Code : **BI** **GA**

1 drawer H75 + 4 drawers H150

W.	D.	Reference	Color Code		
1200	750	W 01 001 0739	BI or GA		
1500	750	W 01 001 0740	BI or GA		
1800	750	W 01 001 0741	BI or GA		
2000	750	W 01 001 0742	BI or GA		

The 5 drawers units can be fixed either on right or left side.
They come in light grey (GC) RAL 7035

See technical features in page 8

ACCESSORIES
SEE PAGE 36



WORKBENCHES

SI height-adjustable workbenches

NEW



SI workbench with 40mm thick plywood worktop,
mechanically adjustable, height from 780 to 1060mm

Frame color : ● Industrial Blue RAL 5015 ● Anthracite Grey RAL 7016
Color Code : **BI** **GA**

W.	D.	Reference	Color Code		
1200	750	W 01 001 0029	BI or GA		
1500	750	W 01 001 0030	BI or GA		
1800	750	W 01 001 0031	BI or GA		
2000	750	W 01 001 0032	BI or GA		

NEW



SI workbench with 24mm thick plywood worktop, mecha-
nically adjustable, height from 764 to 1044mm

Frame color : ● Industrial Blue RAL 5015 ● Anthracite Grey RAL 7016
Color Code : **BI** **GA**

W.	D.	Reference	Color Code		
1200	750	W 01 001 0081	BI or GA		
1500	750	W 01 001 0082	BI or GA		
1800	750	W 01 001 0083	BI or GA		
2000	750	W 01 001 0084	BI or GA		

See technical features in page 8

WORKBENCHES



SI height-adjustable workbenches

48H

ACCESSORIES
SEE PAGE 36

NEW



SI workbench with 40mm thick laminated RESITOP worktop,
mechanically adjustable, height from 780 to 1060mm

Frame color : ● Industrial Blue RAL 5015 ● Anthracite Grey RAL 7016
Color Code : BI GA

W.	D.	Reference	Color Code
1200	750	W 01 001 0185	BI or GA
1500	750	W 01 001 0186	BI or GA
1800	750	W 01 001 0187	BI or GA
2000	750	W 01 001 0188	BI or GA

NEW



SI workbench with 30mm thick laminated RESITOP worktop,
mechanically height adjustable from 770 to 1050mm

Frame color : ● Industrial Blue RAL 5015 ● Anthracite Grey RAL 7016
Color Code : BI GA

W.	D.	Reference	Color Code
1200	750	W 01 001 0237	BI or GA
1500	750	W 01 001 0238	BI or GA
1800	750	W 01 001 0239	BI or GA
2000	750	W 01 001 0240	BI or GA

NEW



SI workbench with 38mm thick melamine worktop, mechanically adjustable, height from 780 to 1060mm

Frame color : ● Industrial Blue RAL 5015 ● Anthracite Grey RAL 7016
Color Code : **BI** **GA**

W.	D.	Reference	Color Code
1200	750	W 01 001 0133	BI or GA
1500	750	W 01 001 0134	BI or GA
1800	750	W 01 001 0135	BI or GA
2000	750	W 01 001 0136	BI or GA

NEW



SI workbench with 28mm thick melamine worktop, mechanically adjustable, height from 768 to 1048mm

Frame color : ● Industrial Blue RAL 5015 ● Anthracite Grey RAL 7016
Color Code : **BI** **GA**

W.	D.	Reference	Color Code
1200	750	W 01 001 0623	BI or GA
1500	750	W 01 001 0624	BI or GA
1800	750	W 01 001 0625	BI or GA
2000	750	W 01 001 0626	BI or GA

WORKBENCHES



SI height-adjustable workbenches

48H

ACCESSORIES
SEE PAGE 36

NEW



SI workbench with 40mm thick plywood worktop, electrically adjustable, height from 740 to 1140mm

Frame color : ● Industrial Blue RAL 5015 ● Anthracite Grey RAL 7016
Color Code : **BI** **GA**

W.	D.	Reference	Color Code
1200	750	W 01 001 0802	BI or GA
1500	750	W 01 001 0803	BI or GA
1800	750	W 01 001 0804	BI or GA
2000	750	W 01 001 0805	BI or GA

NEW



SI workbench with 24mm thick plywood worktop, electrically adjustable, height from 724 to 1124mm

Frame color : ● Industrial Blue RAL 5015 ● Anthracite Grey RAL 7016
Color Code : **BI** **GA**

W.	D.	Reference	Color Code
1200	750	W 01 001 0815	BI or GA
1500	750	W 01 001 0816	BI or GA
1800	750	W 01 001 0817	BI or GA
2000	750	W 01 001 0818	BI or GA

NEW



SI workbench with 40mm thick laminated RESITOP worktop,
electrically adjustable, height from 740 to 1140mm

Frame color : ● Industrial Blue RAL 5015 ● Anthracite Grey RAL 7016
Color Code : **BI** **GA**

W.	D.	Reference	Color Code
1200	750	W 01 001 0828	BI or GA
1500	750	W 01 001 0829	BI or GA
1800	750	W 01 001 0830	BI or GA
2000	750	W 01 001 0831	BI or GA

NEW



SI workbench with 30mm thick laminated RESITOP worktop,
electrically adjustable, height from 730 to 1130mm

Frame color : ● Industrial Blue RAL 5015 ● Anthracite Grey RAL 7016
Color Code : **BI** **GA**

W.	D.	Reference	Color Code
1200	750	W 01 001 0841	BI or GA
1500	750	W 01 001 0842	BI or GA
1800	750	W 01 001 0843	BI or GA
2000	750	W 01 001 0844	BI or GA

NEW



SI workbench with 38mm thick melamine worktop, electrically adjustable, height from 738 to 1138mm

Frame color : ● Industrial Blue RAL 5015 ● Anthracite Grey RAL 7016
Color Code : **BI** **GA**

W.	D.	Reference	Color Code
1200	750	W 01 001 0867	BI or GA
1500	750	W 01 001 0868	BI or GA
1800	750	W 01 001 0869	BI or GA
2000	750	W 01 001 0870	BI or GA

NEW



SI workbench with 28mm thick melamine worktop, electrically adjustable, height from 728 to 1128mm

Frame color : ● Industrial Blue RAL 5015 ● Anthracite Grey RAL 7016
Color Code : **BI** **GA**

W.	D.	Reference	Color Code
1200	750	W 01 001 0880	BI or GA
1500	750	W 01 001 0881	BI or GA
1800	750	W 01 001 0882	BI or GA
2000	750	W 01 001 0883	BI or GA

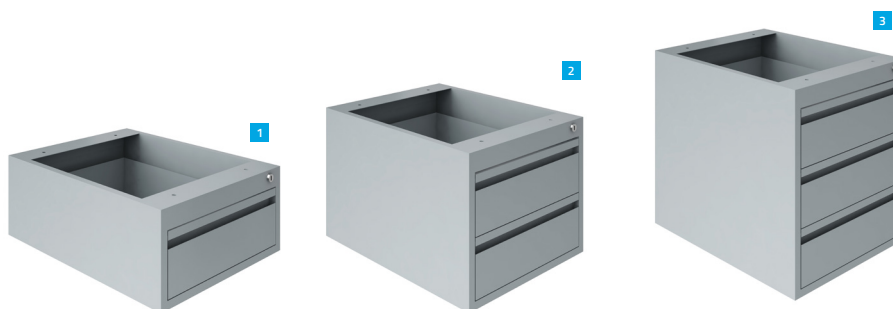
WORKBENCHES

Floors and wall units with drawers



Galvanised shelf for SI workbenches

W.	D.	Reference		
1200	750	W 01 001 0471		
1500	750	W 01 001 0472		
1800	750	W 01 001 0473		
2000	750	W 01 001 0474		



Suspended drawer units and floor-based cabinets

Drawer unit color ● Light grey RAL 7035

Color Code : **GC**

W.	D.	H.	Description	Reference	Color Code		
460	600	220	1 drawer H150	W 01 009 0096	GC		1
460	600	370	2 drawers H150	W 01 009 0097	GC		2
460	600	520	3 drawers H150	W 01 009 0098	GC		3

WORKBENCHES



PTH fixed without or with drawers units

48H

ACCESSORIES
SEE PAGE 36



PTH workbench, 40mm thick plywood worktop, height 840 mm

Frame color : ● Industrial Blue RAL 5015 ● Anthracite Grey RAL 7016
Color Code : BI GA

W.	D.	Fixed without drawer				1 cabinet 1 drawer H150				1 cabinet 2 drawers H150				1 cabinet 3 drawers H150			
		Reference	Color Code			Reference	Color Code			Reference	Color Code			Reference	Color Code		
1200	750	W 01 002 0003	Bl or GA			W 01 002 0157	Bl or GA			W 01 002 0185	Bl or GA			W 01 002 0213	Bl or GA		
1500	750	W 01 002 0004	Bl or GA			W 01 002 0158	Bl or GA			W 01 002 0186	Bl or GA			W 01 002 0214	Bl or GA		
1800	750	W 01 002 0005	Bl or GA			W 01 002 0159	Bl or GA			W 01 002 0187	Bl or GA			W 01 002 0215	Bl or GA		
2000	750	W 01 002 0006	Bl or GA			W 01 002 0160	Bl or GA			W 01 002 0188	Bl or GA			W 01 002 0216	Bl or GA		



PTH workbench, 24mm thick plywood worktop, height 824 mm

Frame color : ● Industrial Blue RAL 5015 ● Anthracite Grey RAL 7016
Color Code : BI GA

W.	D.	Fixed without drawer				1 cabinet 1 drawer H150				1 cabinet 2 drawers H150				1 cabinet 3 drawers H150			
		Reference	Color Code			Reference	Color Code			Reference	Color Code			Reference	Color Code		
1200	750	W 01 002 0016	Bl or GA			W 01 002 0161	Bl or GA			W 01 002 0189	Bl or GA			W 01 002 0217	Bl or GA		
1500	750	W 01 002 0017	Bl or GA			W 01 002 0162	Bl or GA			W 01 002 0190	Bl or GA			W 01 002 0218	Bl or GA		
1800	750	W 01 002 0018	Bl or GA			W 01 002 0163	Bl or GA			W 01 002 0191	Bl or GA			W 01 002 0219	Bl or GA		
2000	750	W 01 002 0019	Bl or GA			W 01 002 0164	Bl or GA			W 01 002 0192	Bl or GA			W 01 002 0220	Bl or GA		

The 5 drawers units can be fixed either on right or left side.
They come in light grey (GC) RAL 7035

See technical features in page 9

ACCESSORIES
SEE PAGE 36



WORKBENCHES

PTH fixed without or with drawers units



PTH workbench with 40mm thick laminated RESITOP worktop, height under the worktop 840mm

Frame color : ● Industrial Blue RAL 5015 ● Anthracite Grey RAL 7016
Color Code : BI GA

W.	D.	Fixed without drawer				1 cabinet 1 drawer H150				1 cabinet 2 drawers H150				1 cabinet 3 drawers H150			
		Reference	Color Code			Reference	Color Code			Reference	Color Code			Reference	Color Code		
1200	750	W 01 002 0068	BI or GA			W 01 002 0165	BI or GA			W 01 002 0193	BI or GA			W 01 002 0221	BI or GA		
1500	750	W 01 002 0069	BI or GA			W 01 002 0166	BI or GA			W 01 002 0194	BI or GA			W 01 002 0222	BI or GA		
1800	750	W 01 002 0070	BI or GA			W 01 002 0167	BI or GA			W 01 002 0195	BI or GA			W 01 002 0223	BI or GA		
2000	750	W 01 002 0071	BI or GA			W 01 002 0168	BI or GA			W 01 002 0196	BI or GA			W 01 002 0224	BI or GA		



PTH workbench with 30mm thick laminated RESITOP worktop with cabinet, height under the worktop 830mm

Frame color : ● Industrial Blue RAL 5015 ● Anthracite Grey RAL 7016
Color Code : BI GA

W.	D.	Fixed without drawer				1 cabinet 1 drawer H150				1 cabinet 2 drawers H150				1 cabinet 3 drawers H150			
		Reference	Color Code			Reference	Color Code			Reference	Color Code			Reference	Color Code		
1200	750	W 01 002 0081	BI or GA			W 01 002 0169	BI or GA			W 01 002 0197	BI or GA			W 01 002 0225	BI or GA		
1500	750	W 01 002 0082	BI or GA			W 01 002 0170	BI or GA			W 01 002 0198	BI or GA			W 01 002 0226	BI or GA		
1800	750	W 01 002 0083	BI or GA			W 01 002 0171	BI or GA			W 01 002 0199	BI or GA			W 01 002 0227	BI or GA		
2000	750	W 01 002 0084	BI or GA			W 01 002 0172	BI or GA			W 01 002 0200	BI or GA			W 01 002 0228	BI or GA		

The 5 drawers units can be fixed either on right or left side.
They come in light grey (GC) RAL 7035

See technical features in page 9



PTH workbench with 38mm thick melamine worktop and cabinet, height 838mm

Frame color : ● Industrial Blue RAL 5015 ● Anthracite Grey RAL 7016
Color Code : **BI** **GA**

W.	D.	Fixed without drawer		1 cabinet 1 drawer H150		1 cabinet 2 drawers H150		1 cabinet 3 drawers H150	
		Reference	Color Code	Reference	Color Code	Reference	Color Code	Reference	Color Code
1200	750	W 01 002 0029	Bl or GA	W 01 002 0173	Bl or GA	W 01 002 0201	Bl or GA	W 01 002 0229	Bl or GA
1500	750	W 01 002 0030	Bl or GA	W 01 002 0174	Bl or GA	W 01 002 0202	Bl or GA	W 01 002 0230	Bl or GA
1800	750	W 01 002 0031	Bl or GA	W 01 002 0175	Bl or GA	W 01 002 0203	Bl or GA	W 01 002 0231	Bl or GA
2000	750	W 01 002 0032	Bl or GA	W 01 002 0176	Bl or GA	W 01 002 0204	Bl or GA	W 01 002 0232	Bl or GA

PTH workbench with 28mm thick melamine worktop and cabinet, height 828mm

Frame color : ● Industrial Blue RAL 5015 ● Anthracite Grey RAL 7016
Color Code : **BI** **GA**

W.	D.	Fixed without drawer		1 cabinet 1 drawer H150		1 cabinet 2 drawers H150		1 cabinet 3 drawers H150	
		Reference	Color Code	Reference	Color Code	Reference	Color Code	Reference	Color Code
1200	750	W 01 002 0042	Bl or GA	W 01 002 0177	Bl or GA	W 01 002 0205	Bl or GA	W 01 002 0233	Bl or GA
1500	750	W 01 002 0043	Bl or GA	W 01 002 0178	Bl or GA	W 01 002 0206	Bl or GA	W 01 002 0234	Bl or GA
1800	750	W 01 002 0044	Bl or GA	W 01 002 0179	Bl or GA	W 01 002 0207	Bl or GA	W 01 002 0235	Bl or GA
2000	750	W 01 002 0045	Bl or GA	W 01 002 0180	Bl or GA	W 01 002 0208	Bl or GA	W 01 002 0236	Bl or GA

PTH workbench with 19mm thick melamine worktop and cabinet, height 819mm

Frame color : ● Industrial Blue RAL 5015 ● Anthracite Grey RAL 7016
Color Code : **BI** **GA**

W.	D.	Fixed without drawer		1 cabinet 1 drawer H150		1 cabinet 2 drawers H150		1 cabinet 3 drawers H150	
		Reference	Color Code	Reference	Color Code	Reference	Color Code	Reference	Color Code
1200	750	W 01 002 0055	Bl or GA	W 01 002 0181	Bl or GA	W 01 002 0209	Bl or GA	W 01 002 0237	Bl or GA
1500	750	W 01 002 0056	Bl or GA	W 01 002 0182	Bl or GA	W 01 002 0210	Bl or GA	W 01 002 0238	Bl or GA
1800	750	W 01 002 0057	Bl or GA	W 01 002 0183	Bl or GA	W 01 002 0211	Bl or GA	W 01 002 0239	Bl or GA
2000	750	W 01 002 0058	Bl or GA	W 01 002 0184	Bl or GA	W 01 002 0212	Bl or GA	W 01 002 0240	Bl or GA

The 5 drawers units can be fixed either on right or left side.
They come in light grey (GC) RAL 7035

See technical features in page 9



PTH workbench with 40mm thick plywood worktop, mechanically adjustable, height from 780 to 1060 mm

Frame color : ● Industrial Blue RAL 5015 **BI** ● Anthracite Grey RAL 7016 **GA**
Color Code :

W.	D.	Reference	Color Code
1200	750	W 01 002 0243	BI or GA
1500	750	W 01 002 0244	BI or GA
1800	750	W 01 002 0245	BI or GA
2000	750	W 01 002 0246	BI or GA



PTH workbench with 24mm thick plywood worktop, mechanically adjustable, height from 764 to 1044 mm

Frame color : ● Industrial Blue RAL 5015 **BI** ● Anthracite Grey RAL 7016 **GA**
Color Code :

W.	D.	Reference	Color Code
1200	750	W 01 002 0256	BI or GA
1500	750	W 01 002 0257	BI or GA
1800	750	W 01 002 0258	BI or GA
2000	750	W 01 002 0259	BI or GA

WORKBENCHES



PTH height-adjustable workbenches

48H

ACCESSORIES
SEE PAGE 36



PTH workbench with 40mm thick RESITOP worktop, mechanically adjustable, height from 780 to 1060 mm

Frame color : ● Industrial Blue RAL 5015 **BI** ● Anthracite Grey RAL 7016 **GA**
Color Code :

W.	D.	Reference	Color Code
1200	750	W 01 002 0269	BI or GA
1500	750	W 01 002 0270	BI or GA
1800	750	W 01 002 0271	BI or GA
2000	750	W 01 002 0272	BI or GA



PTH workbench with 30mm thick RESITOP worktop, mechanically adjustable, height from 770 to 1050 mm

Frame color : ● Industrial Blue RAL 5015 **BI** ● Anthracite Grey RAL 7016 **GA**
Color Code :

W.	D.	Reference	Color Code
1200	750	W 01 002 0282	BI or GA
1500	750	W 01 002 0283	BI or GA
1800	750	W 01 002 0284	BI or GA
2000	750	W 01 002 0285	BI or GA



PTH workbench with 38mm thick melamine worktop, mechanically adjustable, height from 778 to 1058 mm

Frame color : ● Industrial Blue RAL 5015 ● Anthracite Grey RAL 7016
Color Code : **BI** **GA**

W.	D.	Reference	Color Code
1200	750	W 01 002 0308	BI or GA
1500	750	W 01 002 0309	BI or GA
1800	750	W 01 002 0310	BI or GA
2000	750	W 01 002 0311	BI or GA



PTH workbench with 28mm thick melamine worktop, mechanically adjustable, height from 768 to 1048 mm

Frame color : ● Industrial Blue RAL 5015 ● Anthracite Grey RAL 7016
Color Code : **BI** **GA**

W.	D.	Reference	Color Code
1200	750	W 01 002 0321	BI or GA
1500	750	W 01 002 0322	BI or GA
1800	750	W 01 002 0323	BI or GA
2000	750	W 01 002 0324	BI or GA

WORKBENCHES



PTH height-adjustable workbenches

48H

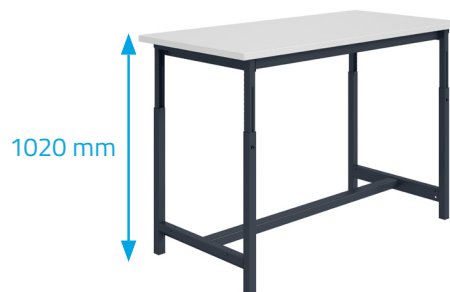
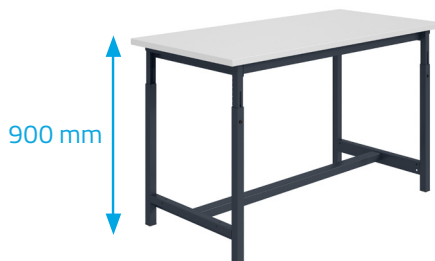
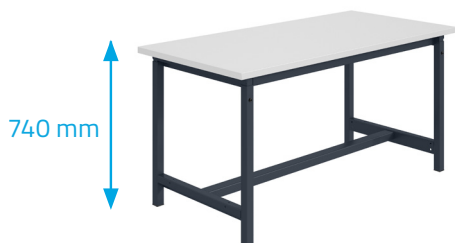
ACCESSORIES
SEE PAGE 36



PTH workbench with 19mm thick melamine worktop, mechanically adjustable, height from 759 to 1039 mm

Colors bases, column and crossbar : ● Industrial Blue RAL 5015 ● Anthracite Grey RAL 7016
Color Code : **BI** **GA**

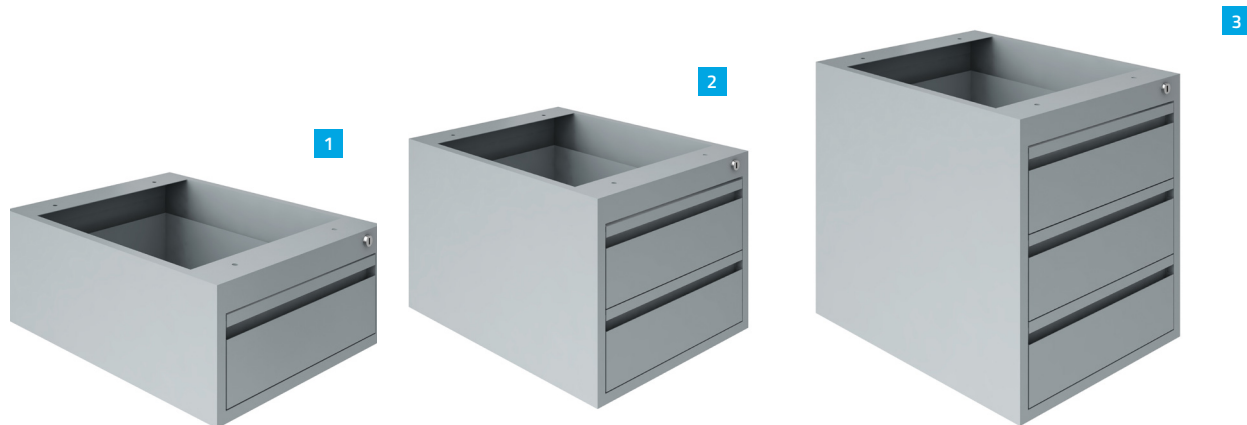
W.	D.	Reference	Color Code
1200	750	W 01 002 0334	BI or GA
1500	750	W 01 002 0335	BI or GA
1800	750	W 01 002 0336	BI or GA
2000	750	W 01 002 0337	BI or GA





Complete shelves for PTH workbenches with 19mm thick melamine

W.	D.	Reference		
1200	750	W 01 002 0133		
1500	750	W 01 002 0134		
1800	750	W 01 002 0135		
2000	750	W 01 002 0136		



Suspended drawer units and floor-based cabinets

Drawer unit color ● Light grey RAL 7035
Color Code : GC

W.	D.	H.	Composition	Reference	Color Code		
460	600	220	1 drawers H150	W 01 009 0096	GC		1
460	600	370	2 drawers H150	W 01 009 0097	GC		2
460	600	520	3 drawers H150	W 01 009 0098	GC		3



REGULOG tables with electrically height adjustable plywood worktop, thickness 24 mm, height 724 to 1124 mm

Colors bases, column and crossbar : ● Light grey RAL 7035

Color Code : GC

W.	D.	Reference	Color Code
1200	750	W 01 014 0043	GC
1500	750	W 01 014 0044	GC
1800	750	W 01 014 0005	GC
2000	750	W 01 014 0006	GC



REGULOG tables with electrically height adjustable melamine top, thickness 28 mm, height 728 to 1128 mm

Frame color : ● Light grey RAL 7035

Color Code : GC

W.	D.	Reference	Color Code
1200	750	W 01 014 0029	GC
1500	750	W 01 014 0030	GC
1800	750	W 01 014 0031	GC
2000	750	W 01 014 0032	GC



WORKBENCHES

REGULOG Tables & accessories



REGULOG tables with electrically height adjustable melamine top, thickness 19mm, height 719 to 1119mm

Colors bases, column and crossbar : ● Light grey RAL 7035

Color Code : **GC**

W.	D.	Reference	Color Code
1200	750	W 01 014 0016	GC
1500	750	W 01 014 0017	GC
1800	750	W 01 014 0018	GC
2000	750	W 01 014 0019	GC



Accessories for REGULOG electrically height adjustable tables

Accessories colors : ● Light grey RAL 7035

Color Code : **GC**

CU support colors : ● Noir RAL 9005

Color Code : **NN**

Model	Reference	Color Code
Drawer unit	W 01 014 0048	GC
Rubbish bin support	W 01 014 0047	GC
Keyboard stand	W 01 014 0046	GC
CU support	W 01 008 0094	NN

See technical features in page 9



TPL tables with 24 mm thick plywood table top, height 824 mm

Frame color : ● Industrial Blue RAL 5015 ● Anthracite Grey RAL 7016
 Color Code : **BI** **GA**

W.	D.	Reference	Color Code
1200	750	W 01 003 0001	BI or GA
1500	750	W 01 003 0002	BI or GA
2000	750	W 01 003 0003	BI or GA



TPL tables with 19 mm thick melamine top, straight edges, height 819 mm

Frame color : ● Industrial Blue RAL 5015 ● Anthracite Grey RAL 7016
 Color Code : **BI** **GA**

W.	D.	Reference	Color Code
1200	750	W 01 003 0004	BI or GA
1500	750	W 01 003 0005	BI or GA
2000	750	W 01 003 0006	BI or GA



Ecolog workstation with RESITOP high thermal resistance laminate top, thickness 40mm, straight edges, superstructure height 1950mm

Frame color : Industrial Blue RAL 5015 Anthracite Grey RAL 7016
Color Code : **BI** **GA**

W.	D.	superstructure H.	Reference	Color Code		
925	650	865	W 01 005 0005	BI or GA		
1360	650	1300	W 01 005 0006	BI or GA		



Ecolog workstation with melamine worktop, thickness 28mm, straight edges, superstructure height 1950mm

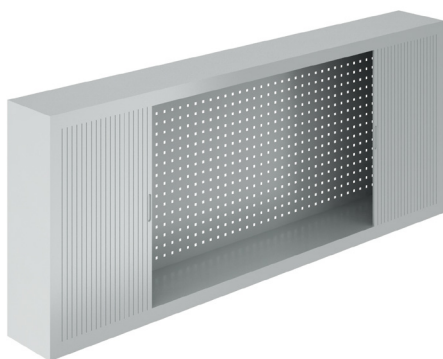
Frame color : Industrial Blue RAL 5015 Anthracite Grey RAL 7016
Color Code : **BI** **GA**

W.	D.	superstructure H.	Reference	Color Code		
925	650	865	W 01 005 0001	BI or GA		
1360	650	1300	W 01 005 0002	BI or GA		

WORKBENCHES

Accessories for workbenches

48H



Back workbench cabinet with roller blind door D250 x H800

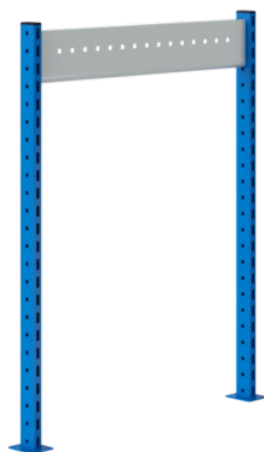
Folded sheet steel cabinet with PVC roller shutter door and key lock.
Perforated backboard with square holes 10x10 every 38 mm over the entire height.
To be fastened to the workbench top.

Colors : ● Light grey RAL 7035

Color Code : **GC**

Overall length	Reference	Color Code
1500	W 01 008 0107	GC
2000	W 01 008 0108	GC

Set of 15 accessories for perforated panel
Reference **W01 008 0245**



Superstructure uprights, height 1200 without cross-member

Enabling fastening of accessories. Fastened with plates to the workbench top.
Upper cross-member made of perforated 10/10th sheet steel.
Uprights: cross-section 60x30 mm

Crossbar color : ● Light grey RAL 7035

Color Code : **GC**

Upright colors : ● Industrial Blue RAL 5015 ● Anthracite Grey RAL 7016

Color Code : **BI** **GA**

Cross bar's length	Number of uprights	For worktop with length mini	Reference	Color Code
865	2	1000/1200	W 01 008 0110	GC and BI or GA
1300	2	1500	W 01 008 0111	GC and BI or GA



Reclining and depth adjustable shelves mounted between the two uprights of the superstructures

Reclining and depth adjustable shelves.
Reversible fastening enabling creation of a H25mm edge at the back and front.
Inclination up to 30°. Load-bearing capacity: 50 kg

Shelf color : ● Light grey RAL 7035

Color Code : **GC**

Length	Depth	Reference	Color Code
865	350	W 01 008 0127	GC
1300	350	W 01 008 0128	GC
865	450	W 01 008 0130	GC
1300	450	W 01 008 0131	GC

Reclining shelves mounted between the superstructure uprights

Sheet steel shelves fastened between the high lateral uprights.
Inclination up to 30° / Load: 50 kg.

Shelf color : ● Light grey RAL 7035

Color Code : **GC**

Length	Depth	Reference	Color Code
865	350	W 01 008 0134	GC
1300	350	W 01 008 0135	GC



Raised shelves

Shelves with 2 lateral cabinets enabling passage of cables .

H650 D400mm.

Load-bearing capacity: 50 kg

Color : ● Light grey RAL 7035

Color Code : **GC**

Overall length	Useful length	Depth	Reference	Color Code
1200	1030	400	W 01 008 0095	GC
1500	1305	400	W 01 008 0096	GC
1800	1605	400	W 01 008 0097	GC
2000	1805	400	W 01 008 0098	GC



Intermediate shelves for raised shelves

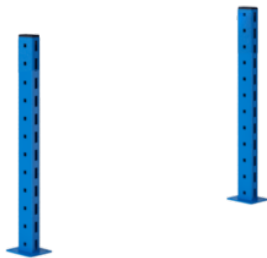
The shelves may be positioned at 2 heights which are added to the raised shelf.

Admissible load per shelf: 50 kg evenly distributed.

Color : ● Light grey RAL 7035

Color Code : **GC**

Overall length	Useful length	Depth	Reference	Color Code
1200	1030	400	W 01 008 0099	GC
1500	1305	400	W 01 008 0100	GC
1800	1605	400	W 01 008 0101	GC
2000	1805	400	W 01 008 0102	GC



Superstructure uprights, height 600 without cross-member

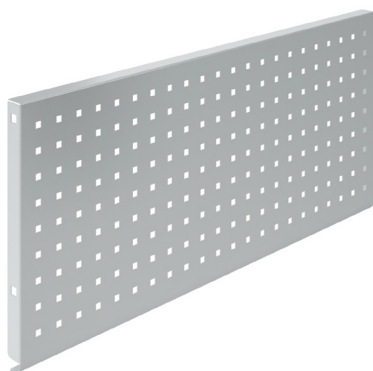
2 uprights for the fastening of accessories: perforated backboard, shelves, grab container rails, etc.

Uprights colors : ● Industrial Blue RAL 5015 ● Anthracite Grey RAL 7016

Color Code : **BI**

GA

For worktop with length	Reference	Color Code
600	W 01 008 0115	BI or GA



Perforated backboard fastened between the superstructure upright

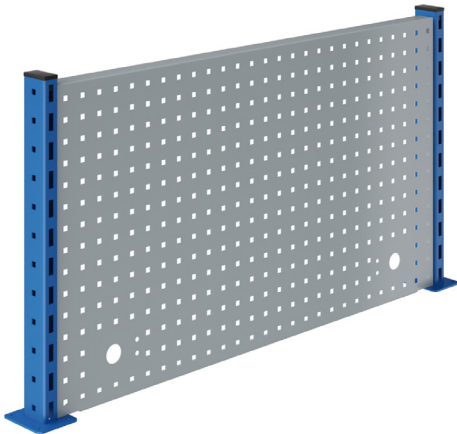
Perforated backboard with square holes 10x10 every 38mm enabling hooking on of tool holder accessories.

Backboard depth 30mm

Panel color : ● Light grey RAL 7035

Color Code : **GC**

Length	Height	Reference	Color Code
865	375	W 01 008 0121	GC
1300	375	W 01 008 0122	GC



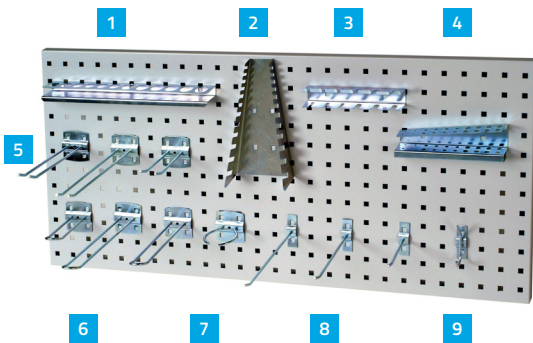
Top perforated bottoms height 585 mm with 2 uprights for workbenches

Perforated backboard with square holes 10x10 every 38mm enabling hooking on of tool holder accessories. Uprights: cross-section 60x30 mm, height 600 mm.

Uprights colors : ● Industrial Blue RAL 5015 ● Anthracite Grey RAL 7016

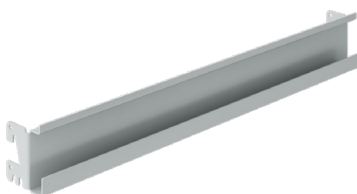
Color Code : **BI** **GA**

For worktop with length	Reference	Color Code
1200	W 01 008 0116	BI or GA
1500	W 01 008 0117	BI or GA
1800	W 01 008 0118	BI or GA
2000	W 01 008 0119	BI or GA



Tool-holder accessories for perforated backboards

Length	Reference
1	12 sockets support W 01 008 0141
2	12 open-end spanners support W 01 008 0142
3	6 screwdrivers support W 01 008 0143
4	20 hex keys support W 01 008 0144
5	Double rod hook L160 W 01 008 0145
	Double rod hook L200 W 01 008 0146
	Double rod hook L100 W 01 008 0147
6	Double hook closed L100 W 01 008 0148
	Double hook closed L200 W 01 008 0149
	Double hook closed L160 W 01 008 0150
7	Loop ring hook diameter 55 W 01 008 0151
8	Single rod hook L100 W 01 008 0152
	Single rod hook L160 W 01 008 0153
	Single rod hook L200 W 01 008 0154
9	Double coat hook L50 W 01 008 0155
	Set of 15 mixed accessories W 01 008 0156
	Set of 15 accessories for AFE W 01 008 0245



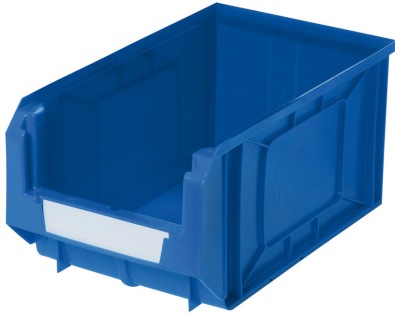
Tray support rails to be fixed between the superstructure posts

True useful length to be increased by 30mm.
Fastened between the superstructure uprights.

Rail Color : ● Light grey RAL 7035

Color Code : **GC**

Length	Reference	Color Code
865	W 01 008 0162	GC
1300	W 01 008 0163	GC



Grab containers

Available color : ● Blue

Set of	Total width	Total height	Capacity in liters	Reference	Color
48 grab containers	105	75	1	W 01 008 0219	Bleu
38 grab containers	144	120	3,5	W 01 008 0220	Bleu
24 grab containers	205	163	10	W 01 008 0221	Bleu



Europe containers

Grey polypropylene containers with European dimensions.

Total depth	Total width	Total height	Capacity in liters	Reference
400	600	200	38	W 01 008 0228
300	400	200	17	W 01 008 0229
400	600	300	58	W 01 008 0230



Set of 4 castors

Set of 4 swivel castors, diameter 100 mm, 2 of which with brake.

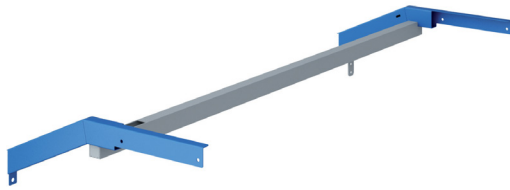
Diameter	For worktops	Reference
100	SI	W 01 008 0242
100	PTH	W 01 008 0243



Set of 4 jacks

Set of 4 workbench jacks.

For worktops	Reference
SI	W 01 008 0239
PTH	W 01 008 0241



Supports for workstation LED lighting with rail for trolleys

Trolley rail : ● Light grey RAL 7035

Color Code : GC

Support color : ● Industrial Blue RAL 5015

● Anthracite Grey RAL 7016

Color Code : BI

GA

Length	Reference	Color Code
865 for 920mm lighting element	W 01 008 0169	GC et BI or GA
1300 for lighting element, 1300 or 920mm	W 01 008 0170	GC et BI or GA



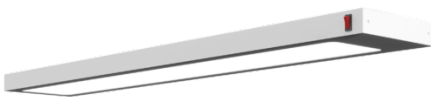
Metal plates for lighting supports

Enable fastening of a lighting element length 920mm on a 1300mm support.
Fastened with 4 screws on the lighting support.

Platinum color : ● Light grey RAL 7035

Color Code : GC

Length	Reference	Color Code
for 1300MM support and 920MM lighting element	W 01 008 0237	GC



Workbench LED lighting

On/Off switch.

Light intensity: 1000 lux at 1 metre/W

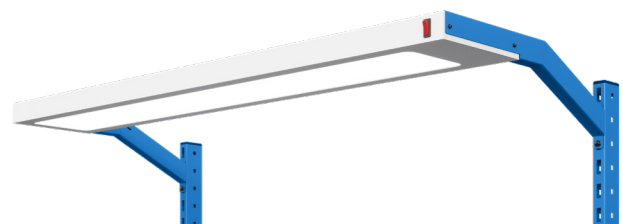
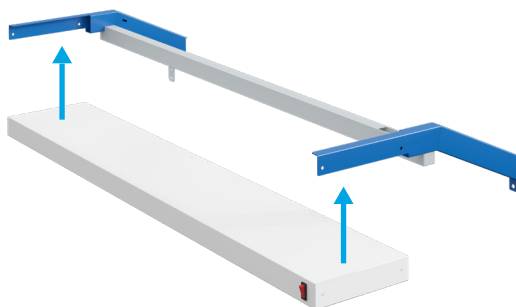
Colour rendering index: CRI>80.

Colour temperature: 6500 K.

Operating life: >60 300 hours.

Dimensions: 2 lengths 920 and 1355mm, depth 251mm and height 50 mm.

Length	Reference
920 (for 865 support)	W01 008 0262
1355 (for 1300 support)	W 01 008 0264





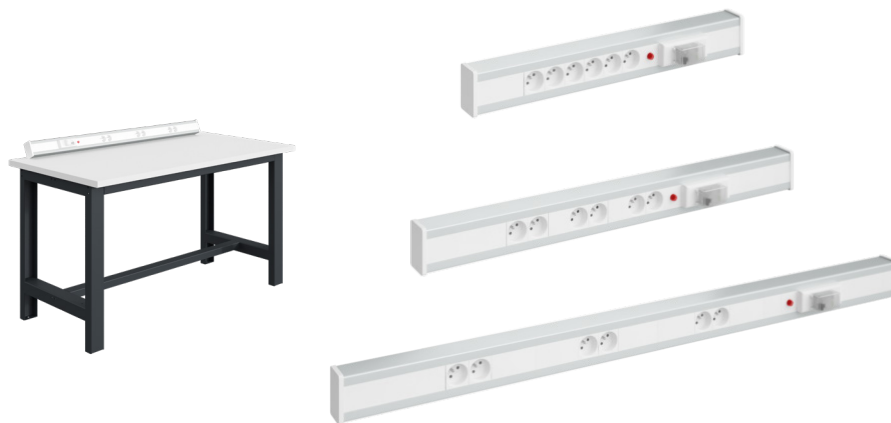
Separate foot rest

Height adjustable from 70 to 250 mm

Colors : ● Grey RAL 5015

Color Code : GC

Length	Depth	Model	Reference	Color Code
500	320	Fixe	W 01 008 0210	GC



Reclined power point rail with circuit-breaker

6 power points, 2 phases + earth: 220V - 16A

1 differential circuit-breaker 30 mA

Supply cable length 2 m

Body of folded aluminium with rear fastening brackets

Length	Model	Reference
632	6 PC+T	W 01 008 0246
862	6 PC+T	W 01 008 0247
1292	6 PC+T	W 01 008 0248



RESPECTEZ LES CONSIGNES DE SECURITE

**ENTREE INTERDITE
AUX PERSONNES
NON AUTORISEES**

SOYEZ ATTENTIFS AUX RISQUES DE DANGERS

LA SECURITE EST L'AFFAIRE DE TOUS

MOBILE TROLLEYS

SRI SUPPORTS	46
SPR 331 MOBILE TROLLEYS	48
CAR MOBILE TROLLEYS	50
SV MOBILE TROLLEYS	51



NEW



SERVILOG industrial tool trays

The SERVILOG tool tray is of the highest quality and is ideally suited for a wide range of functional application.

The frame is made from 10 to 20/10th thick steel offering excellent rigidity.

Its swivel castors guarantee smooth movement and optimum manoeuvrability in all directions even under heavy load. Two of which are equipped with a brake.

The drawers are mounted on ball-race telescopic sliders to offer 100% opening. A latch located under the handle of each drawer prevents untimely opening. A central locking system is provided to lock all drawers at the same time.

A wide variety of accessories may be added thanks to the numerous perforations enabling accommodation of different types of holders.

There are 2 models of 6 or 7 drawers in 3 possible colours red, blue or anthracite grey.

Dimensions:

Length 910mm x Depth 470mm x Height 960mm

Structure Color : ● Industrial Blue RAL 5015 ● Anthracite Grey RAL 7016 ● Red RAL 3000

Color Code : **BI** **GA** **RV**

Number of drawers	Reference	Color Code
6 drawers	W 02 001 0090	BIGC OR GAGC OR RVGC
7 drawers	W 02 001 0091	BIGC OR GAGC OR RVGC

MOBILE TROLLEYS

Accessories for SERVILOG

NEW



Accessories for SERVILOG tool trays

Sofame proposes a range of perfectly adapted accessories to complete your SERVILOG tool tray :

- Vertical perforated tool-holder backboard fastened to the back of the tool tray with 4 screws (W735 x D23 x H520mm - square holes 10x10 every 38mm)
- Grab container support rail (L460mm)
- Multi-purpose containers which hook onto the front end of the tool tray (W275 x D70 x H150mm)
- Rubbish bin hooked onto the sides of the tool tray (W300 x D195 x H330mm)
- Paper towel roll support reel for support of a roll with width 280mm and maximum diameter of 260mm

Accessories colors : ● Light grey RAL 7035
Color Code : GC

Accessories-regulog	Reference	Color Code	
Perforated backboard	W 02 001 0092	GC	1
Rubbish bin	W 02 001 0093	GC	2
Multi-purpose containers	W 02 001 0094	GC	3
Paper towel roll support reel	W 02 001 0095	-	4
Grab containers support rail	W 02 001 0096	GC	5

MOBILE TROLLEYS

SRI support



48H



SRI support for Europe containers, adjustable support height and angle



Metal support with front edge and anti-slip surface coating.

Height adjustable from 630 to 910 mm.

Reclining upper support adjustable in 3 positions: 0°, 15° or 30°.

4 rollers diameter 100, 2 of which with brakes.

Structure Color : ● Industrial Blue RAL 5015 ● Anthracite Grey RAL 7016
 Color Code : ● **BI** ● **GA**

W.	D.	H.	Reference	Color Code
610	410	650-900	W 02 002 0011	BI or GA

MOBILE TROLLEYS

Support SRI 2



SRI2 support for Europe containers, adjustable support height and angle



Metal support with front edge folded upwards.

The lower supports are optional (2 formats)

Height adjustable from 590 to 850mm and 650 to 910mm.

Reclining upper support adjustable in 3 positions: 0°, 15° or 30°

4 rollers diameter 100, 2 of which with brakes.

Structure Color : ● Industrial Blue RAL 5015 ● Anthracite Grey RAL 7016
Color Code : **BI** **GA**

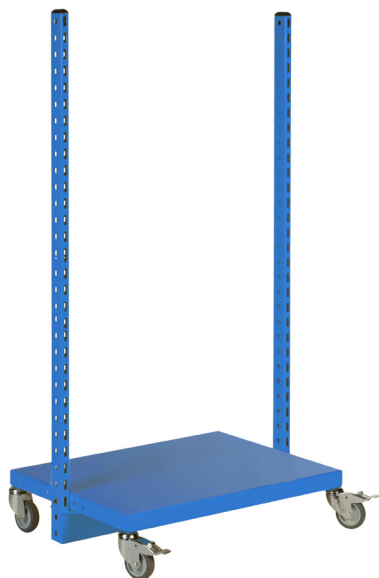
W.	D.	H.	Model	Reference	Color Code		
610	410	630/880	SRI2 Europe containers support with reclining shelf	W 02 002 0005	BI or GA		
610	410	-	Lower shelf	W 02 002 0008	BI or GA		

Europe boxes are sold in page 39

MOBILE TROLLEYS

SPR 331

48H



The trolley SPR 331 has been designed to provide optimum modularity based on a standard frame which may be equipped with accessories as required. The numerous accessories are the same as those of the workbenches offering perfect compatibility between the workbench and its environment.

Combinations of accessories on the frame is limitless and may be modified at any time for reconfiguration of the trolley.

Frame only: fixed lower base made of folded sheet steel, 185 mm from the floor and 2 uprights perforated every 50 mm.

Wheels: 4 swivel castors 2 of which with brake, diameter 100.

Optional handle

SPR 331 structure modular supports only

Structure Color : Industrial Blue RAL 5015 Anthracite Grey RAL 7016
Color Code : **BI** **GA**

W.	H.	Embase depth	Reference	Color Code
925	1240	450	W 02 005 0005	BI or GA
925	1640	450	W 02 005 0006	BI or GA
925	1240	650	W 02 005 0007	BI or GA
925	1640	650	W 02 005 0008	BI or GA

Accessories of the modular stand SPR 331

Color Code : **GC**

L.	Accessories depth	Model	Reference	Color Code
865	450	Reclining and depth adjustable shelves	W02 005 0082	GC
865	650	Reclining and depth adjustable shelves	W02 005 0014	GC
865	-	Grab containers support rail	W01 008 0162	GC

Model	Reference
Handle only	W 02 005 0074



SPR 331 trolley with 2 Europe container frames

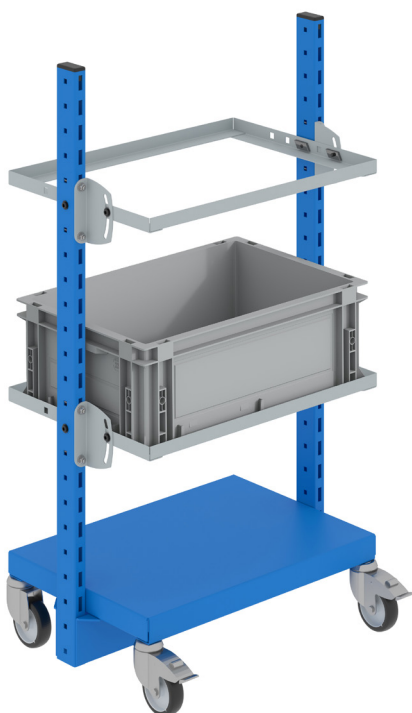
Europe box frame color : Light grey RAL 7035

Structure Color : Industrial Blue RAL 5015 Anthracite Grey RAL 7016
Color Code : **BI** **GA**

W.	H.	Embase depth	Reference	Color Code
695	1240	450	W 02 005 0020	BI or GA

Comes without Europe box

Model	Reference
Handle only	W 02 005 0074



Europe containers

Grey polypropylene containers with European dimensions.

Total depth	Total width	Total height	Capacity in liters	Reference
400	600	200	38	W 01 008 0228
400	600	300	58	W 01 008 0230

MOBILE TROLLEYS

SPR 331

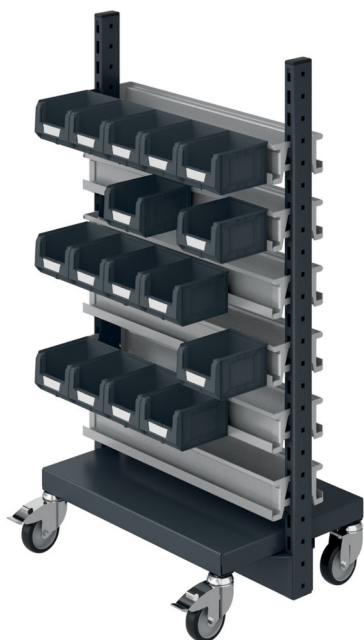


SPR 331 trolley with shelves

Structure Color : ● Industrial Blue RAL 5015 ● Anthracite Grey RAL 7016
Color Code : BI GA

W.	H.	Embase depth	Accessories depth	Number of shelves	Reference	Color Code		
925	1240	450	450	2 shelves	W 02 005 0030	BI or GA		
925	1640	450	450	3 shelves	W 02 005 0032	BI or GA		
925	1240	650	650	2 shelves	W 02 005 0034	BI or GA		
925	1640	650	650	3 shelves	W 02 005 0036	BI or GA		

Model	Reference
Handle only	W 02 005 0074

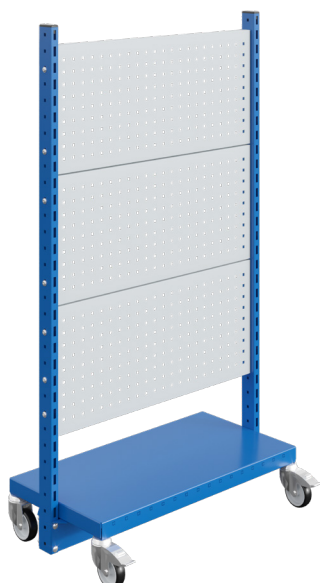


SPR 331 trolley with grab container rail

Structure Color : ● Industrial Blue RAL 5015 ● Anthracite Grey RAL 7016
Color Code : BI GA

W.	H.	Embase depth	Number of rails	Reference	Color Code		
695	1240	450	12 grab container rail	W 02 005 0046	BI or GA		
695	1640	450	18 grab container rail	W 02 005 0047	BI or GA		
695	1240	650	12 grab container rail	W 02 005 0048	BI or GA		
695	1640	650	18 grab container rail	W 02 005 0049	BI or GA		
925	1240	450	12 grab container rail	W 02 005 0050	BI or GA		
925	1640	450	18 grab container rail	W 02 005 0051	BI or GA		
925	1240	650	12 grab container rail	W 02 005 0052	BI or GA		
925	1640	650	18 grab container rail	W 02 005 0053	BI or GA		

Model	Reference
Handle only	W 02 005 0074



SPR 331 trolley with perforated backboard

Structure Color : ● Industrial Blue RAL 5015 ● Anthracite Grey RAL 7016
Color Code : BI GA

W.	H.	Embase depth	Accessories depth	Number of panels	Reference	Color Code		
925	1240	450	450	2 panels	W 02 005 0086	BI or GA		
925	1640	450	450	3 panels	W 02 005 0087	BI or GA		

Model	Reference
Handle only	W 02 005 0074

MOBILE TROLLEYS

CAR

48H

NEW



CAR trolleys with 4 uprights



Frame composed of 4 steel tube uprights, cross-section 30x30

Sheet steel shelves.

Epoxy paint finish, oven polymerised at 180°.

Assembly with screws in inserts.

4 swivel castors, diameter 100, 2 of which with brake.

Load-bearing capacity 150 kg.

Optional handle

Structure Color : ● Industrial Blue RAL 5015 ● Anthracite Grey RAL 7016
Color Code : **BI** **GA**

W.	H.	D.	Number of worktops	Reference	Color Code		
700	910	815	2	W 02 006 0011	BIGC ou GAGC		
700	910	1215	2	W 02 006 0012	BIGC ou GAGC		
700	910	815	3	W 02 006 0013	BIGC ou GAGC		
700	910	1215	3	W 02 006 0014	BIGC ou GAGC		
700	1275	815	4	W 02 006 0015	BIGC ou GAGC		
700	1275	1215	4	W 02 006 0016	BIGC ou GAGC		
700	1675	815	5	W 02 006 0017	BIGC ou GAGC		
700	1675	1215	5	W 02 006 0018	BIGC ou GAGC		

Model	Reference
Maneuvering handle	W 02 006 0007



SV trolley with 2 side panels

1 lower plinth, 1 upper plate, and 2 uprights made of 20/10 ribbed folded sheet steel.
 2 or 3 levels of trays. The upper plate is equipped with 4 metal edges 20 mm high.
 Assembly by screws on inserts.
 4 swivel castors, diameter 100, 2 of which with brakes

Load-bearing capacity 150Kg
 Optional handle

Structure Color : ● Industrial Blue RAL 5015 ● Anthracite Grey RAL 7016 ● Light grey RAL 7035
 Color Code : **BI** **GA** **GC**

W.	H.	D.	Number of levels	Reference	Color Code
540	810	670	2	W 02 007 0020	BI or GA ou GC
540	810	670	3	W 02 007 0021	BI or GA ou GC

Model	Reference
Maneuvering handle	W 02 007 0019

SV trolley with 2 side panels and drawers unit or door unit

1 lower base, 1 top shelf and 2 uprights made of ribbed, folded sheet steel 20/10th.
 2 or 3 shelf levels.
 Top shelf with 4 metal edges Ht 20mm
 Epoxy paint finish, oven polymerised at 180°
 Assembly with screws in inserts.
 4 swivel castors, diameter 100, 2 of which with brakes
 Load-bearing capacity 150 kg.
 Optional handle

Structure Color : ● Industrial Blue RAL 5015 ● Anthracite Grey RAL 7016 ● Light grey RAL 7035
 Color Code : **BI** **GA** **GC**

Drawer Block Colors : ● Light grey RAL 7035

W.	H.	D.	Number of drawers	Reference	Color Code
540	810	670	1	W 02 007 0022	BI or GA ou GC
540	810	670	2	W 02 007 0023	BI or GA ou GC
540	810	670	3	W 02 007 0024	BI or GA ou GC

Model	Reference
Maneuvering handle	W 02 007 0019



STORAGE UNITS

ROLLER SHUTTER DOOR CABINETS	54
CABINETS WITH CLEAR DOORS	55
HINGED DOOR CABINETS	56
ELEMENTS FOR CABINETS WITH HINGED DOORS OR CLEAR DOORS	57
TALL FITTED WORKSHOP CABINETS	58
SHORT FITTED WORKSHOP CABINETS	61
PERFORATED WORKSHOP CABINETS	62
DESK TOP CABINETS	63
CLOAKROOM	64
CLOAKROOM ACCESSORIES	65



STORAGE UNITS

Roller shutter door cabinets

48H



Per shelf

Roller shutter door cabinets

The casing element of the roller shutter door cabinets is made of spot-welded, 10/10th thick ribbed, folded sheet steel.

The doors are composed of 2 roller shutters with extruded PVC blades each with a 10/10th folded sheet steel end blade.

The roller shutters slide in ABS rails located at the top and bottom and is recessed in a the space available on the interior of the cabinet side walls. This system enables easy opening and ensures the space in front of the cabinet is totally unimpeded.

The metal end blades on both sides are equipped with ABS recessed handles, a flush-mounted key lock which moves the locking system to latch into the end blade of the opposite door, thus providing a 1-point locking mechanism.

The shelves are made of spot-weld assembled, 10/10th thick, ribbed, folded sheet steel. They are foreseen with a welded omega-form stiffener which provides greater rigidity and allow a evenly distributed load of 150kg per shelf. They are height adjustable in step of 25mm and secured with galvanised steel latches.

All metal elements are finished with epoxy powder paint, oven polymerised at 180°C.

Compliant with standard NF D65 763

Body, doors and shelves color : ● Light grey RAL 7035

Color Code : **GC**

W.	H.	D.	Model	Reference	Color Code		
1200	1950	450	Tall cabinet 4 shelves	W 03 006 0001	GC		
1200	1950	665		W 03 006 0002	GC		
1200	1000	450	Short cabinet 2 shelves	W 03 006 0003	GC		
1200	1000	665		W 03 006 0004	GC		
1200	-	450	1 shelf	W 03 006 0005	GC		
1200	-	665		W 03 006 0006	GC		



Cabinets with clear doors

The casing element of the clear door cabinets is made of spot-welded, 10/10th thick ribbed, folded sheet steel.

The doors are made of spot-weld assembled, 10/10th thick, ribbed, folded sheet steel. They are foreseen with a welded omega-form stiffener which provides greater rigidity and conceals the closing mechanism. They are incorporated in the top and bottom strips of the cabinet casing and are mounted on concealed steel hinge pins which cannot be unhinged in the closed position for greater security. These hinge pins enable door opening to an angle of 240°. Closing is achieved with a built-in, 2-point handle/lock system.

An opening with width 300mm and height 700mm for the short cabinet and 1640mm on the tall cabinet provides an adequate view of the cabinet contents. The opening is closed with a 2mm and 3mm thick clear acrylic glass panel crimped into a reinforcement frame which is riveted inside the door and invisible from the exterior.

The shelves are made of spot-weld assembled, 10/10th thick, ribbed, folded sheet steel. They are foreseen with a welded omega-form stiffener which provides greater rigidity and allow a evenly distributed load of 150kg per shelf. They are height adjustable in step of 25mm and secured with galvanised steel latches. The shelves are perforated every 150mm in order to incorporate vertical dividers with a depth of 500mm.

It is possible to add optional shelves of the colour RAL 7035 GC (light grey). The useful dimensions of the shelves are: W996 x D440

All elements are finished with epoxy powder paint, oven polymerised at 180°

The clear door cabinets are available in 2 heights: 1000mm (2 shelves) and 1950mm (4 shelves); depth 500mm. The entire 1000mm width of the cabinet may be used.

The 1000mm high short cabinets are not stackable!

Compliant with standard NF D65 763

Body Colors : ● Light grey RAL 7035

Door Colors : ● Industrial Blue RAL 5015 ● Anthracite Grey RAL 7016

Color Code : **GGBI** **GCGA**

W.	H.	D.	Model	Reference	Color Code		
1000	1950	500	Tall cabinet 4 shelves	W 03 005 0001	GGBI or GCGA		
1000	1000	500	Short cabinet 2 shelves	W 03 005 0002	GGBI or GCGA		
1000	-	500	1 shelf	W 03 002 0005	GC		

STORAGE UNITS

Hinged door cabinets



48H



Per shelf

Hinged door cabinets

The casing element of the clear door cabinets is made of spot-welded, 10/10th thick ribbed, folded sheet steel.

The doors are made of spot-weld assembled, 10/10th thick, ribbed, folded sheet steel. They are foreseen with a welded omega-form stiffener which provides greater rigidity and conceals the closing mechanism. They are incorporated between the top strip and the bottom of the cabinet casing and are mounted on concealed steel hinge pins which cannot be unhinged in the closed position for greater security. These hinge pins enable door opening to an angle of 240°. Closing is achieved with a built-in, 2-point handle/lock system.

The shelves are made of spot-weld assembled, 10/10th thick, ribbed, folded sheet steel. They are foreseen with a welded omega-form stiffener which provides greater rigidity and allow a evenly distributed load of 150kg per shelf. They are height adjustable in step of 25mm and secured with galvanised steel latches.

The assembled elements are finished with a coat of epoxy powder paint, oven polymerised at 180°.

Compliant with standard NF D65 763

Body Colors : ● Light grey RAL 7035

Door Colors : ● Industrial Blue RAL 5015 ● Anthracite Grey RAL 7016

Color Code: **G C B I**

G C G A

W.	H.	D.	Model	Reference	Color Code		
1000	1950	500	Tall cabinet 4 shelves	W 03 002 0001	G C B I or G C G A		
1000	1950	665		W 03 002 0002	G C B I or G C G A		
1000	1000	500	Short cabinet 2 shelves	W 03 002 0003	G C B I or G C G A		
1000	1000	665		W 03 002 0004	G C B I or G C G A		
1000	-	500	1 shelf	W 03 002 0005	G C		
1000	-	665		W 03 002 0006	G C		

Low cabinets are not stackable

STORAGE UNITS

Elements for cabinets with hinged doors or clear doors
or clear doors



Elements for cabinets with hinged doors or clear doors W1000xD500

Useful dimensions for the telescopic drawer: W890 x D420mm

Shelves and Drawers Colors : ● Light grey RAL 7035

Color Code : GC

	W.	H.	D.	Model	Reference	Color Code		
1	1000	65	430	Telescopic drawer	W 03 009 0001	GC		
	1000	100	430		W 03 009 0002	GC		
	445	110	430	Unit with 2 drawers	W 03 009 0003	GC		
445	160	430	W 03 009 0004		GC			
2	445	210	430	Unit with 3 drawers	W 03 009 0005	GC		
	295	65	430		W 03 009 0006	GC		
	295	110	430	W 03 009 0007	GC			
	295	160	430	W 03 009 0008	GC			
3	145	65	430	Unit with 6 drawers	W 03 009 0009	GC		
	145	110	430		W 03 009 0010	GC		
	145	110	430	Set of 4 galvanised dividers	W 03 009 0012	GC		
	145	160	430		W 03 009 0013	GC		
	145	210	430		W 03 009 0014	GC		
145	310	430	W 03 009 0015	GC				
	1000	-	500	1 shelf cabinet load 150kg	W 03 002 0005	GC		

The rows of drawers incorporate the guides and stops

STORAGE UNITS

Tall fitted workshop cabinets

48H



Visual given as an example of composition



Tall fitted workshop cabinets

Tall cabinets with hinged doors W1000 x D500 x H1950mm.
Depth of drawers: D430 mm

Body Colors : ● Light grey RAL 7035

Door Colors : ● Industrial Blue RAL 5015 ● Anthracite Grey RAL 7016

Color Code : **G C B I** **G C G A**

Number of shelves	Composition	Reference	Color Code		
4	2 telescopic drawers (H65) + 2 telescopic drawers (H100)	W 03 009 0016	G C B I or G C G A		
4	1 telescopic drawer (H65) + 3 telescopic drawers (H100)	W 03 009 0017	G C B I or G C G A		
6	2 drawers (W445xH160) + 6 drawers (W295xH160) + 6 drawers (W145xH65)	W 03 009 0018	G C B I or G C G A		
6	2 drawers (W445xH210) + 6 drawers (W445xH160) + 6 drawers (W295xH110)	W 03 009 0019	G C B I or G C G A		
8	2 drawers (W445xH210) + 6 drawers (W295xH160) + 12 drawers (W145xH110) + 6 drawers (W145xH65)	W 03 009 0020	G C B I or G C G A		
12	24 drawers (W145XH110) + 12 drawers (W295XH110) + 4 drawers (W445XH110)	W 03 009 0022	G C B I or G C G A		
1	18 drawers (W145XH60) + 6 drawers (W295XH60) + 3 drawers (W295XH160) + 2 drawers (W445XH110) + 2 drawers (W445XH160) + 2 drawers (W445XH210)	W 03 009 0024	G C B I or G C G A		
2	1 drawer (W890XH65) + 3 drawers (W890XH100)	W 03 009 0025	G C B I or G C G A		
3	3 drawers (W890XH65) + 2 drawers (W890XH100)	W 03 009 0026	G C B I or G C G A		

STORAGE UNITS

Tall fitted workshop cabinets



Visual given as an example of composition



Tall fitted workshop cabinets

Tall cabinets with hinged doors W1000 x D500 x H1950mm.
Depth of drawers: D430 mm

Body Colors : ● Light grey RAL 7035

Door Colors : ● Industrial Blue RAL 5015 ● Anthracite Grey RAL 7016

Color Code : **G C B I** **G C G A**

	Number of shelves	Composition	Reference	Color Code		
1	7	6 drawers (W145XH65) + 6 drawers (W145XH110) + 2 drawers (W445XH160) + 2 drawers (W445XH210)	W 03 009 0027	G C B I or G C G A		
2	5	2 drawers (W890XH100) + 3 drawers (W295XH160)	W 03 009 0028	G C B I or G C G A		
3	5	6 drawers (W145XH110) + 3 drawers (W295XH110) + 1 drawer (W890XH65) + 4 drawers (W890XH100)	W 03 009 0029	G C B I or G C G A		
	6	6 drawers (W145XH65) + 6 drawers (W295XH160) + 1 drawers (W890XH65) + 4 drawers (W890XH100)	W 03 009 0030	G C B I or G C G A		

STORAGE UNITS

Tall fitted workshop cabinets

48H



Visual given as an example of composition



Tall fitted workshop cabinets

Tall cabinets with hinged doors W1000 x D500 x H1950mm.
Depth of drawers: D430 mm

Body Colors : ● Light grey RAL 7035

Door Colors : ● Industrial Blue RAL 5015 ● Anthracite Grey RAL 7016

Color Code : **G C B I** **G C G A**

	Number of shelves	Composition	Reference	Color Code		
1	5	2 drawers (W445XH210)	W 03 009 0032	G C B I or G C G A		
	8	6 drawers (W145XH65) + 3 drawers (W295XH110) + 6 drawers (W295XH160) + 2 drawers (W445XH210)	W 03 009 0033	G C B I or G C G A		
3	8	6 drawers (W145XH110) + 3 drawers (W295XH110) + 3 drawers (W295XH160)	W 03 009 0034	G C B I or G C G A		
2	6	1 drawer (W890XH100) + 2 drawers (W445XH160)	W 03 009 0035	G C B I or G C G A		

STORAGE UNITS

Short fitted workshop cabinets



Per shelf

Short fitted workshop cabinets

Short cabinets with hinged doors W1000 x D500 x H1000mm.
The short cabinets are not stackable!
Depth of drawers: 430mm

Body Colors : ● Light grey RAL 7035

Door Colors : ● Industrial Blue RAL 5015 ● Anthracite Grey RAL 7016

Color Code : **GCBI** **GCGA**

Drawers and Shelves Colors : ● Light grey RAL 7035

	Number of shelves	Composition	Reference	Color Code		
1	2	1 drawer (W890XH100)	W 03 009 0031	GCBI or GCGA		
2	3	no drawer	W 03 009 0036	GCBI or GCGA		
3	2	1 drawer (W890xH100) + 1 drawer (W890XH65)	W 03 009 0037	GCBI or GCGA		

STORAGE UNITS

Perforated workshop cabinets

48H

1



2



3



Visual given as an example of composition



Perforated workshop cabinets

Tall cabinets with perforated doors and rear wall W1000 x D500 x H1950
 Dimensions of drawers: W890 x D430 x H100mm

Body Colors : ● Light grey RAL 7035
 Door Colors : ● Industrial Blue RAL 5015
 Color Code : **GCB**

	Number of shelves	Composition	Reference	Color Code
1	2	2 drawers	W 03 008 0001	GCB
2	2	2 drawers + 1 wooden shelf	W 03 008 0002	GCB
3	1	3 drawers + 1 wooden shelf	W 03 008 0003	GCB
	2	3 drawers	W 03 008 0004	GCB
	2	4 drawers	W 03 008 0005	GCB
	2	4 drawers + 1 wooden shelf	W 03 008 0006	GCB

STORAGE

Desk top cabinets



Per shelf

Desk top cabinets

Single-piece, 10/10th folded sheet steel casing.
Spot welded bottom, top and base.
Hinge doors reinforced with omega-form stiffeners.
Built-in, 2-point key lock.
Shelves height adjustable in steps of 50 mm with a 10/10th ribbed, folded sheet steel latches.

Load per shelf: 150 kg.
Drawer height 150mm mounted on telescopic ball-race slider.
Desk top element inclined to 20°
Compliant with standard NF D65 763

Body Colors : ● Light grey RAL 7035

Door Colors : ● Industrial Blue RAL 5015 ● Anthracite Grey RAL 7016

Color Code : **GCBI** **GCGA**

W.	H.	D.	Model	Reference	Color Code		
500	945	500	Simple cabinet, 2 shelves	W 03 010 0001	GCBI or GCGA		1
500	945	500	Simple cabinet, 2 drawers	W 03 010 0002	GCBI or GCGA		
500	1120	500	Desk cabinet, 2 shelves	W 03 010 0004	GCBI or GCGA		2
500	1120	500	Desk cabinet, 1 drawer + 2 shelves	W 03 010 0005	GCBI or GCGA		3
500	1120	500	Desk cabinet, 2 drawers	W 03 010 0006	GCBI or GCGA		
500	175	500	Stackable desk cabinet	W 03 010 0007	GC		4
1000	1000	500	Simple cabinet, 2 shelves	W 03 002 0003	GCBI or GCGA		
1000	1175	500	Desk cabinet, 2 shelves	W 03 010 0010	GCBI or GCGA		

The casing and shelves are made of spot-weld assembled, 8/10th thick, ribbed, folded sheet steel.

The doors are made of spot-weld assembled, 10/10th thick, ribbed, folded sheet steel. They are equipped with a welded, omega-form stiffener providing greater rigidity and ventilation openings in the top and bottom to ensure adequate air flow.

They are incorporated between the top and bottom strips of the cabinet casing and are mounted on concealed steel hinge pins which cannot be unhinged in the closed position for greater security. These hinge pins enable door opening to an angle of 120°. An embossed label holder is located in the top section and locking is provided by a 3-point padlock hasp (padlock not provided).



Clean industry cloakroom lockers

Width per compartment: 300mm. Useful width: 295mm. Useful depth: 485mm. Total useful height: 1,760mm. Useful height above the construction site helmet holder shelf : 325mm.

Interior fittings: Helmet-holder shelf, clothes hanger rail, 2 lateral coat hooks.

Compliant with standard NF D65 760

Body Colors : ● Light grey RAL 7035

Door Colors : ● Industrial Blue RAL 5015

Color Code : **G C B I**

W.	H.	D.	Number of boxes	Reference	Color Code		
600	1800	500	2	W 03 013 0002	G C B I		
900	1800	500	3	W 03 013 0003	G C B I		
1200	1800	500	4	W 03 013 0004	G C B I		



Dirty industry cloakroom lockers

Width per compartment: 400mm. Useful width: 395mm.

Useful depth: 485mm. Total useful height: 1,760mm. Useful height above the motorcycle helmet holder shelf: 325mm.

Interior fittings: Helmet holder shelf, clothes hanger rail, central vertical divider under the helmet shelf.

All elements are finished with epoxy powder paint, oven polymerised at 180°C.

Compliant with standard NF D65 760

Body Colors : ● Light grey RAL 7035

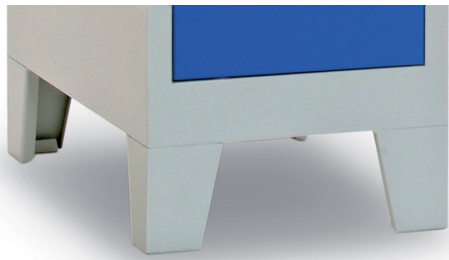
Door Colors : ● Industrial Blue RAL 5015

Color Code : **G C B I**

W.	H.	D.	Number of boxes	Reference	Color Code		
800	1800	500	2	W 03 014 0002	G C B I		
1200	1800	500	3	W 03 014 0003	G C B I		

STORAGE UNITS

Cloakroom Accessories



1



2



3



4

Accessories for cloakroom lockers

Locker accessories may be incorporated into the industrial lockets in accordance with specific site requirements.

An inclined top surface of the locker to avoid the placing of objects.

Accessories Colors : ● Light grey RAL 7035

Color Code : **GC**

	Model and number of boxes		Reference	Color Code		
1	Set of 4 legs for locker	2 to 4 compartments H150	W 03 016 0002	GC		
		W.	H.			
		600	150	W 03 016 0005	GC	
2	Adjustable screw jacks base for lockers	800	150	W 03 016 0006	GC	
		900	150	W 03 016 0007	GC	
		1200	150	W 03 016 0008	GC	
3	Bench base for lockers	W.	H.			
		600	340	W 03 016 0010	GC	
		800	340	W 03 016 0011	GC	
		900	340	W 03 016 0012	GC	
		1200	340	W 03 016 0013	GC	
4	Inclined top for lockers	W.				
		600		W 03 016 0016	GC	
		800		W 03 016 0017	GC	
		900		W 03 016 0018	GC	
		1200		W 03 016 0019	GC	



COMPUTER STORAGE

COMPUTER CABINETS AIC500	68
COMPUTER CABINETS AI2005	68
COMPUTER CABINETS AIC2009	69
IT SUPPORTS	69



COMPUTER STORAGE

Computer cabinets

48H



Computer cabinet AIC 500

Made of welded 10/10th thick sheet steel, our cabinets are extremely robust.
 1 compartment with a transparent door for the screen with measurements: W595xD540xH740
 1 large storage compartment with key-locking, reinforced, full metal door dimensions: W595xD540xH795
 Keyboard and mouse total pull-out sliding stand.
 Supplied with 1 block of 5 sockets + fan 9 Watts.
 Monitor: up to 24-inch.
 Compliant with standard NF D65 763

Cabinet colors : ● Industrial Blue RAL 5015 ● Anthracite Grey RAL 7016
 Color Code : **BI** **GA**

W.	H.	D.	Model	Reference	Color Code		
650	1750	550	Fixes	W 04 001 0001	BI or GA		
650	1890	550	On castors	W 04 001 0002	BI or GA		



Computer cabinet AI 2005

Made of welded 10/10th thick sheet steel.
 1 compartment with a transparent front for the screen with measurements: W560xD90xH480.
 1 compartment with a full-metal door and key lock with dimensions: W530xD540xH600.
 Keyboard/mouse stand and CPU/printer total pull-out sliding stand.
 Monitor: up to 22-inch.
 Compliant with standard NF D65 763

Cabinet colors : ● Industrial Blue RAL 5015 ● Anthracite Grey RAL 7016
 Color Code : **BI** **GA**

W.	H.	D.	Model	Reference	Color Code		
640	1550	660	Reclining computer storage cabinet	W 04 001 0003	BI or GA		
640	1690	660	Reclining computer storage cabinet on castors	W 04 001 0004	BI or GA		

COMPUTER STORAGE

Computer cabinets



Computer cabinet AIC 2009

Made of welded steel sheet, our cabinets are very robust.

1 transparent front compartment for the screen useful dimensions: W590xD90xH500.

1 compartment with reinforced door that locks, useful dimensions: W530xD500xH880.

Keyboard/mouse support drawer with total extension.

Monitor: up to 22 inches.

Compliant with standard NF D65 763

Cabinet colors : ● Industrial Blue RAL 5015 ● Anthracite Grey RAL 7016

Color Code : BI GA

W.	H.	D.	Model	Reference	Color Code		
645	1650	555	Fixed-position computer storage cabinet	W 04 001 0007	BI or GA		
645	1790	555	Computer storage cabinet on castors	W 04 001 0008	BI or GA		



IT supports

Welded steel tube 60x60 frame, thickness 20/10th.

Oven polymerized epoxy paint finish.

Computer monitor support made of anti-reflection acrylic glass for monitors up to 22-inch

fastened with 4 clamps. Mobile on 4 castors, 2 of which with brake, diameter 100mm.

Supplied in kit form.

Optional: Keyboard drawer mounted on telescopic ball-race sliders.

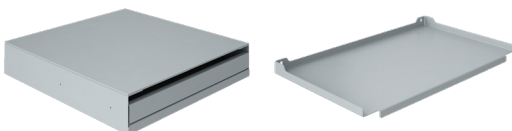
3 shelves to be fitted at 3 heights

Maximum load for shelf: 25kg

Stucture Color : ● Industrial Blue RAL 5015 ● Anthracite Grey RAL 7016

Color Code : BI GA

W.	H.	D.	Model	Reference	Color Code		
700	1960	600	Computer support on pads	W 04 001 0009	BI or GA		
700	1760	600	Computer support on castors	W 04 001 0011	BI or GA		
-	-	-	Monitor support, height-adjustable on pads	W 04 001 0013	GC		
700	-	400	Shelf	W 04 001 0014	GC		





SEATS

STOOLS	72
SIT-STAND	73
AIRPLUS SEATS	74
ERGOSOFT 2010 SEATS	75
ERGOSLIM SEATS	76
ERGODYN 2008 SEATS	77
NATUR SEATS	78
ERGONOMICS OF THE SEAT	79





ERGODYN 2000 stools

Round polyurethane seat, diameter 340mm with breather perforations.

Seat rotation of 360°.

Height adjustment with a gas lift column operated using a lever under the seat.

2 strut heights: stroke 200 or 265mm.

5-branch reinforced polyamid base, diameter 600mm for low stools, 680mm for high stools or

5-branch cast aluminium base coated with black epoxy paint, diameter: 610mm for low stools and 670mm for high stools.

Compliant with standard NF D65 761

Model	Version	Seat height	Reference
Footrest + pads	Polyamid base	53 to 78 cm	W 05 001 0013
Pads		53 to 78 cm	W 05 001 0015
Castors		45 to 65 cm	W 05 001 0017
Pads		45 to 65 cm	W 05 001 0019

NEW



NATUR stools

Round wooden seat, diameter 320mm.

Seat rotation of 360°.

Height adjustment with a gas lift column operated with a circular lever under the seat, accessible from the entire circumference.

2 possible cylinder heights : 190mm or 265mm

5-branch reinforced polyamid base, diameter: 600mm for low stools or 680mm for high stools

Compliant with standard NF D65 761

Model	Version	Seat height	Reference
Footrest + pads	Polyamid base	53 to 78 cm	W 05 001 0014
Pads		53 to 78 cm	W 05 001 0016
Castors		45 to 65 cm	W 05 001 0018
Pads		45 to 65 cm	W 05 001 0020

NEW

ERGOSLIM sit-stand seats



Polyurethane seat with width 360mm and depth 330mm as well as a 50mm high lower back support with handle grips.

Cast aluminium base coated with black epoxy paint, diameter 610mm or nylon reinforced polyamid base, diameter 600mm

Seat rotation 360°

Height adjustment with a gas lift column operated using a lever under the seat. The seat height adjustment gas lift column has a stroke of 200mm for the FLEX version or 265mm for the straight version.

The FLEX column enables a practically permanent back movement while maintaining excellent stability.

Only available with pads.

Model	Version	Seat height	Reference
FLEX column	Aluminium base	68 to 88cm	W 05 010 0015
Fixed column	Aluminium base	58 to 84cm	W 05 010 0013

Stool AS200



Polyurethane seat with width 330 mm and depth 240 mm as well as a 160 mm high lower back support.

Cast aluminium 5-branch base coated with black epoxy paint, diameter 610mm or nylon reinforced polyamid 5-branch base, diameter 600mm.

Seat rotation 360°

Height adjustment with a gas lift column operated using a lever under the seat. The seat height adjustment gas lift column has a stroke of 190mm for the FLEX version or 265mm for the straight version.

The FLEX column enables a practically permanent back movement while maintaining excellent stability.

Only available with pads.

Model	Version	Seat height	Reference
FLEX column	Polyamid base	69 to 89cm	W 05 002 0016
Fixed column	Polyamid base	59 to 85cm	W 05 002 0008

Stool LM2023



Polyurethane seat with width 360 mm and depth 250 mm as well as a 100 mm high lower back support with handle grips.

Black, cast aluminium 5-branch base, diameter 610mm or reinforced polyamid 5-branch base, diameter 600mm.

Seat rotation of 360°.

Height adjustment with a gas lift column operated using a lever under the seat. The seat height adjustment gas lift column has a stroke of 200mm for the FLEX version or 265mm for the straight version.

The FLEX column enables a practically permanent back movement while maintaining excellent stability.

Only available with pads.

Compliant with standard NF D65 761

Model	Version	Seat height	Reference
FLEX column	Aluminium base	69 to 89cm	W 05 002 0003
Fixed column	Aluminium base	59 to 85cm	W 05 002 0002



AIRPLUS seats

Soft polyurethane seat with breather perforations, width 480mm, depth 450mm. Optional mechanism for seat depth adjustment. Soft polyurethane backrest with breather perforations, width 410mm, height 390mm.

The backrest height is adjusted with a lever with a travel stroke of 120mm. Asynchronous dynamic seating mechanism enabling coordinated and independent adjustment of seat and backrest inclination angles.

Seat rotation of 360°.

5-branch cast aluminium base coated with black epoxy paint, diameter: 610mm for low chairs and 668mm for high chairs or 5-branch nylon reinforced polyamid base, diameter: 600mm for low and medium height seats and 680mm for high seats.

Height adjustment with a gas lift column operated using a lever under the seat. The gas lift column enables height adjustment of the seat/backrest assembly with a travel stroke of 140mm, 200mm or 265mm.

A height-adjustable footrest is proposed on the high version with a column stroke of 265mm. The castors are of the hard floor type, diameter 50mm.

35mm high pads

Model	Version	Seat height	Reference
Footrest + pads	Aluminium base	59 to 89cm	W 05 003 0004
Pads		59 to 89cm	W 05 003 0003
Castors		52 to 72cm	W 05 003 0006
Pads		52 to 72cm	W 05 003 0002



ERGOSOFT 2010 seats

Soft ribbed polyurethane seat, width 440mm, depth 420mm Optional mechanism for seat depth adjustment.

Polyurethane backrest, width 380mm, height 300mm.

The backrest height is adjusted with a lever with a travel stroke of 120mm.
Asynchronous dynamic seating mechanism enabling coordinated and independent adjustment of seat and backrest inclination angles.

Seat rotation of 360°.

5-branch cast aluminium base coated with black epoxy paint, diameter: 610mm for low seats and 670mm for high chairs or 5-branch nylon reinforced polyamid base, diameter: 600mm for low and medium height seats, 680mm for high seats

Height adjustment with a gas lift column operated using a lever under the seat. The gas lift column enables height adjustment of the seat/backrest assembly with a travel stroke of 140mm, 200mm or 265mm.

A height-adjustable footrest is proposed on the high version with a column stroke of 265mm.
The castors are of the hard floor type, diameter 50mm.

35mm high pads.

Model	Version	Seat height	Reference
Footrest + pads	Aluminium base	56 to 82cm	W 05 004 0007
Pads		56 to 82cm	W 05 004 0005
Castors		49 to 69cm	W 05 004 00011
Pads		49 to 69cm	W 05 004 0003



ERGOSLIM seats

Polyurethane seat width and depth 395mm. Optional mechanism for seat depth adjustment.

Polyurethane backrest, height 295mm and width 375mm.

The backrest height is adjusted with a lever with a travel stroke of 120mm.

Asynchronous dynamic seating mechanism enabling coordinated and independent adjustment of seat and backrest inclination angles.

Seat rotation of 360°.

5-branch cast aluminium base coated with black epoxy paint, diameter: 610mm for low seats and 670mm for high chairs or 5-branch nylon reinforced polyamid base, diameter: 600mm for low and medium height seats, 680mm for high seats

Height adjustment with a gas lift column operated using a lever under the seat. The gas lift column enables height adjustment of the seat/backrest assembly with a travel stroke of 140mm, 200mm or 265mm.

A height-adjustable footrest is proposed on the high version with a column stroke of 265mm. The castors are of the hard floor type, diameter 50mm.

35mm high pads.

Model	Version	Seat height	Reference
Footrest + pads	Aluminium base	56 to 82 cm	W 05 010 0001
Pads		56 to 82 cm	W 05 010 0002
Castors		49 to 69 cm	W 05 010 0003
Pads		49 to 69 cm	W 05 010 0004



ERGODYN 2008 seats

ERGODYN is a classic amongst work seats, both from an aesthetic as well as a seating quality point of view making it a reference thanks to its quality-price ratio.

Embossed polyurethane seat, width 410mm, depth 380mm Optional mechanism for seat depth adjustment.

Embossed polyurethane backrest, width 380mm and height 250mm with grasping recess. The backrest height is adjusted with a lever with a travel stroke of 120mm.

Asynchronous dynamic seating mechanism enabling coordinated and independent adjustment of seat and backrest inclination angles.

Seat rotation of 360°.

5-branch cast aluminium base coated with black epoxy paint, diameter: 610mm for low seats and 668mm for high seats.

Height adjustment with a gas lift column operated using a lever under the seat. The gas lift column enables height adjustment of the seat/backrest assembly with a travel stroke of 190mm or 265mm.

A height-adjustable footrest is proposed on the high version with a column stroke of 265mm. The castors are of the hard floor type, diameter 50mm. 35mm high pads

Model	Version	Seat height	Reference
Footrest + pads	Aluminium base	56 to 82 cm	W 05 005 0007
Pads		56 to 82 cm	W 05 005 0005
Castors		49 to 69 cm	W 05 005 0011
Pads		49 to 69 cm	W 05 005 0003
Footrest + pads	Polyamid base	56 to 82 cm	W 05 005 0013
Pads		56 to 82 cm	W 05 005 0015
Castors		49 to 69 cm	W 05 005 0017
Pads		49 to 69 cm	W 05 005 0019



NATUR chairs

The NATUR chair respects the tradition of using wood in the workplace. Seating comfort is assured by the design form which guarantees the optimum seating position for the user. A particularly pleasant feeling is procured by the contact with wood.

Beech wood seat, thickness 8mm, depth 390mm, width 410mm. Optional mechanism for seat depth adjustment.

Backrest height 260 and width 390mm.

The backrest height is adjusted with a lever with a travel stroke of 120mm.

Asynchronous dynamic seating mechanism enabling coordinated and independent adjustment of seat and backrest inclination angles.

Seat rotation of 360°.

5-branch cast aluminium base coated with black epoxy paint, diameter: 610mm for low seats and 670mm for high chairs or 5-branch nylon reinforced polyamid base, diameter: 600mm for low and medium height seats, 680mm for high seats

Height adjustment with a gas lift column operated using a lever under the seat. The gas lift column enables height adjustment of the seat/backrest assembly with a travel stroke of 140mm, 200mm or 265mm.

A height-adjustable footrest is proposed on the high version with a column stroke of 265mm.

The castors are of the hard floor type, diameter 50mm.

35mm high pads.

Model	Version	Seat height	Reference
Footrest + pads	Aluminium base	56 to 82 cm	W 05 005 0008
Pads		56 to 82 cm	W 05 005 0006
Castors		49 to 69 cm	W 05 005 0012
Pads		49 to 69 cm	W 05 005 0004
Footrest + pads	Polyamid base	53 to 79 cm	W 05 005 0014
Pads		53 to 79 cm	W 05 005 0016
Castors		46 to 66 cm	W 05 005 0018
Pads		46 to 66 cm	W 05 005 0020

1. MOBILITY : The seats may be equipped with either pads, or castors mounted on the base.

a) Skates :

Pads guarantee excellent stability of the seat. They are mandatory, for safety reasons, on high seats with a stroke of more than 200mm when the seating and backrest inclination angle may be adjusted.

b) Castors :

They are provided as standard for the version without brake thus enabling movement at any time and are fitted with a soft rolling band offering greater rolling comfort on hard floors. It is also possible to request castors without this soft rolling band for travel over soft floors (carpets, linoleum, etc.) castors with brake under load in order to prevent movement of the seat when the user is seated and castors with no-load brake to prevent the seat rolling away as the user sits down.

c) Embase :

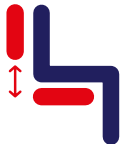
For safety reasons in terms of stability, seats with castors must be mounted on a 5-branch star base. The very flat bases help avoid stumbling over the base branches. The diameter of the seating bases is larger in order to provide enhanced stability and thus safety. They are made of cast aluminium or nylon reinforced polyamid.



2. SEATING HEIGHT ADJUSTMENT :

This is provided with a gas lift column placed between the seat and the base enabling the user to adjust the seating height with a smooth and regular movement. It is controlled with a side lever located under the seat.

Depending on specific user requirements, it exists with a normal stroke of 200mm, a short stroke of 140mm and long stroke of 265mm.



3. BACKREST HEIGHT ADJUSTMENT :

For correct positioning of the backrest and optimisation of back surface contact area, in particular in the lower back region, the height of the backrest may be adjusted.



4. BACKREST INCLINATION ANGLE ADJUSTMENT :

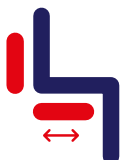
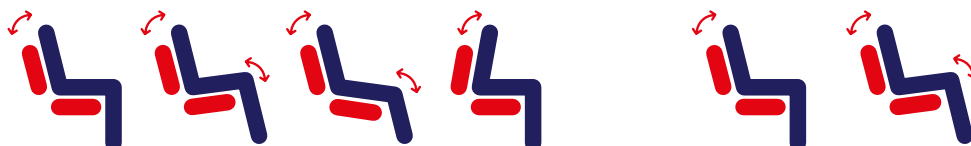
To avoid back fatigue and pain when seated, the user's back must be held and supported by the backrest. Various types of mechanisms enable us to attain this objective :

a. Asynchronous mechanism :

The asynchronous mechanism enables coordinated movement of the backrest and seat, as well as separate adjustment of the seating position in order to establish the best seating position for the tasks required. The seat adjustment lever and well as that for backrest adjustment enables the user to block these elements in the fixed position required, or to allow them to remain free and follow body movement.

b. Synchronous mechanism :

The backrest and seat recline at a given seat/backrest angle ratio for optimum comfort. The backrest return spring force may be adjusted according to the morphology and weight of the user. An anti-return safety system avoids and risk of shocks in the spinal cord. A single lever is used for adjustment.



5. SEATING DEPTH ADJUSTMENT :

In addition to the backrest depth adjustment, it is also possible to adjust the seating depth. This ensures both sufficient back support and a good rest for the upper legs without the risk of cutting the blood flow behind the knees.

SOFAME GENERAL TERMS AND CONDITIONS OF SALE

These general terms and conditions of sale govern product sales by Sofame, a company entered on the Le Mans company and trade register under no. 449 706 365, having its head office at Route de Bonnetable, 72190 Sargé-Les-Le-Mans (hereinafter "Sofame"). They apply to product sales both within France and abroad.

The original version of these general terms and conditions of sale is written in French and is the only legally binding version that will prevail over any other version translated into a foreign language and over any general terms and conditions of purchase or any other document provided by the customer, whatever their provisions.

Placing an order with Sofame implies the full unconditional acceptance of Sofame's price lists and these general terms and conditions of sale. Any other conditions contrary to these general terms and conditions will only be taken into account if expressly accepted by Sofame before the date of the Contract's conclusion. These general terms and conditions of sale annul and supersede any former general terms and conditions as well as any documents (letters, prospectus, advertisements, etc.) exchanged by the parties before the conclusion of any final agreement. If any provision of any contract resulting from these general terms and conditions of sale is held to be invalid by a court or any other administration or authority, such a decision will in no way affect the validity of the other provisions. The failure to exercise any right granted by these general terms and conditions of sale at any time or the failure to insist upon the performance of any provision of the contract resulting from these general terms and conditions will in no way be construed as a modification of the contract or as an express or implied waiver to exercise said right in the future or to insist upon the proper performance of the obligations agreed to under these general terms and conditions.

GOVERNING LAW

Any question relating to these general terms and conditions of sale, and to the sales to which they apply, that is not dealt with by the contractual provisions will be subject to the provisions of French law, excluding the 1980 Vienna Convention on the International Sale of Goods. Any reference to an ICC publication will be considered as referring to the version in force on the date the contract is concluded. Any reference to commercial terms or provisions will be considered as referring to the corresponding terms and provisions of the Incoterms published by the International Chamber of Commerce (hereinafter "ICC") as construed by the Commission on Commercial Law and Practice and its board of experts (ICC Paris).

WARRANTY

Our materials are covered by a 5-year parts and labour warranty for any manufacturing defect under normal use, excluding mechanisms and seat coverings which come with a 2-year warranty. Unless specifically agreed by contract, Sofame will not be compelled to ensure the maintenance of the furniture shown in this catalogue. You should regularly (at least once a year) check that the mechanical items are operating correctly and inspect all frames. Any person responsible for assembling, using or maintaining our furniture must have read and understood the instructions and guidelines.

PRODUCTS

When ordering, customers must precisely describe the specific features and quality of the products they require. Those products are intended to be used in connection with the customer's professional activity. Sofame reserves the right to make any change to its products that it deems useful, up to the delivery of the products, and without any obligation to change the products already delivered or currently on order.

ORDERS & CONCLUSION OF THE CONTRACT

To be taken into account, orders must be placed by a customer whose business longevity is not jeopardised, who has no record of behaviour prejudicial to Sofame (including payment issues), who is not located in a hazardous geographical area (e.g. natural, political, economic or social risk) and who is not located in a country where the products are legally unavailable, for example because of particular regulations or of an exclusivity granted to a third party. As such, the customer is responsible for obtaining any authorisation, permit or licence required to import and buy/sell the products in their region, at their own expense. The order's eligibility is also subject to the physical availability of the products. Sofame cannot accept orders from the customer for products that are temporarily or permanently unavailable. Any modification of the order by the customer before the conclusion of the contract will be taken into account only if this modification is reasonable, does not entail a quantity decrease of more than 10% of the initial order amount (duties and taxes excluded) and has been accepted in writing by Sofame. If not expressly rejected within a 30 day period, the modification will be deemed accepted. The sales contract will only be considered concluded when Sofame provides written confirmation of the order initially placed by the customer. The sales contract will be deemed validly concluded unless the order is not expressly confirmed within a 30 day period after receipt of said order. Any orders received by Sofame agents, representatives or employees will also be confirmed. However, orders will be deemed final and the contract validly concluded, unless the order is received by the aforementioned and not expressly confirmed within a 30 day period following receipt. Any modification or withdrawal of the order by the customer between the conclusion of the sales contract and the product dispatch date will be taken into account only if this modification is reasonable, does not entail a quantity decrease of more than 10% of the initial order amount (duties and taxes excluded) and has been accepted in writing by Sofame. If not expressly rejected within a 30 day period, the modification will be deemed accepted. In case of withdrawal or modification of an order, any down payments that may have been made will remain with Sofame without prejudice to any right to compensation for any damage resulting from the modification or withdrawal of an order. Sofame may ask the customer to provide documents proving the guarantee of an order's payment at any time. Should the customer fail to provide sufficient proof, Sofame reserves the right to cancel finalised and other orders.

DELIVERY

The products will be delivered according to one of the incoterms published by the International Chamber of Commerce (Incoterm 2010), with the appropriate term being chosen and stated on the order. For export sales, product deliveries can occur under these incoterms: EXW (Ex Works), DAP (Delivered At Place), or FAS (Free Alongside Ship). This information is given as an indication only, without prejudice to another incoterm being stated for the delivery of the order in question. The stated incoterm will be recorded on the order confirmation issued by Sofame and any other document relating to the order. No modification of the delivery terms, including the stated incoterm, can occur without Sofame's prior agreement.

Sofame will be considered as having fulfilled its obligation to deliver as soon as the products are provided to the customer or any third party appointed by the customer at the agreed place, without it being necessary for the products to be loaded on any transportation means after delivery. Sofame will ensure transportation of the products to the place of delivery by the means of its choice and will take all the necessary steps for this. Any additional costs incurred by Sofame in transporting the goods from the delivery site to another site, as an additional service, will be directly charged to the customer. Since deliveries are only made according to product availability and in the order of arrival of the orders, Sofame is authorised to make full and partial deliveries. In case of partial delivery, each delivery will be charged separately.

The delivery time frame will be determined by the parties after the order has been placed. In any case, time frames are provided for information purposes only and depend on Sofame's available transport and supplies. Exceeding the time frame will in no case give rise to any damages being awarded or the sales contract being terminated. However, any order exceeding €16,000 (duties and taxes excluded) or any modification of a current order will result in an extended delivery time frame. If the customer does not take delivery of the products within 10 days of their delivery by Sofame, the customer will bear all the costs and assume all the risks for preserving the products, without formal notice being necessary, and it will forfeit the right to claim an obvious defect or compliance issue.

TRANSFER OF RISKS

Sofame will bear all the risks of loss or damage that may affect the products up to the delivery of those products pursuant to the preceding article. After delivery, the customer will bear the risks affecting or caused by the products. For export sales, the transfer of risks occurs in accordance with the selected incoterm that applies to the order.

COMPLIANCE

The condition, compliance, absence of obvious defects and number of products must be checked by the customer when the products arrive at the place of delivery, in the presence of the carrier. Any costs and risks relating to such checks are borne by the customer. Any complaint, reservation or dispute relating to missing and/or damaged products must be notified by registered letter with acknowledgement of receipt to the carrier within 3 days (holidays excluded) following delivery of the products. The customer will be held responsible for any loss suffered by Sofame for any failure to comply with this process. Any complaint, reservation or dispute will also be mentioned on the documents handed over (in particular on the delivery slip) and confirmed in writing to Sofame as soon as possible after delivery, quality and complying with the same conditions of use. If the returned products are not replaced, a refund will be issued in the form of a credit on future orders. Product returns will not give rise to any payment of compensation to the customer. pas dans son emballage ou conditionnement d'origine, s'il présente un quelconque signe de démontage ou d'utilisation. Les frais et risques du retour sont toujours à la charge du Client. Les produits ainsi défectueux seront remplacés par des produits similaires. Les produits similaires, c'est à dire substituables à ceux commandés, sont ceux de même qualité et satisfaisant les mêmes fonctions d'usage. À défaut de remplacement, le retour des produits entraînera leur remboursement par l'établissement d'un avoir sur les ventes ultérieures. Le retour des produits ne donnera lieu au versement d'aucune indemnité au profit du Client. The customer will provide all proof about the reality of the defects noted.

Sofame reserves the right to inspect, check or repair products on site, either itself or through an agent or sub-contractor. If these conditions are not complied with, the delivery will be deemed unconditionally accepted and Sofame will no longer be liable for any product compliance issues. The customer will be liable for any loss suffered by Sofame for any failure to comply with this process. Sofame will only be held responsible for defects, anomalies and shortages arising as a result of its own actions. Any product returns due to obvious defects must have already been approved by Sofame. Any faulty products must be returned within 30 days of delivery. All returned products must be in original condition and packaging. Products that have been dismantled or used will not be accepted. The costs and risks for returns will always be borne by the customer. Faulty products will be replaced by similar products, meaning products that can be substituted for the products ordered, being of the same quality and complying with the same conditions of use. If the returned products are not replaced, a refund will be issued in the form of a credit on future orders. Product returns will not give rise to any payment of compensation to the customer.

WARRANTY AGAINST HIDDEN DEFECTS

Any hidden defects existing on the date the contract is concluded must be notified in writing by the customer as soon as possible after the date on which the defect is or should have been discovered. Notifications will not be taken into account if they are issued more than 30 days after the products arrived. The customer must claim on the warranty for the product's hidden defects within 30 days of the date on which it discovers or should have discovered the hidden defect. This period is the short period set out in Article 1648 of the French Civil Code. No warranty claims for hidden defects can be made by the customer more than 2 months after the products arrived. It is expressly agreed that after the expiration of this period the customer may not invoke the warranty against hidden defects nor use it as a counter-claim to defend itself in a lawsuit brought against it by Sofame for failure to perform the sales contract. The customer will provide all proof regarding the reality and the date of occurrence of the defects noted. Sofame reserves the right to inspect, check or repair products on site, either itself or through an agent or sub-contractor. If these conditions are not complied with, the warranty against hidden defects cannot be claimed. Any product returns due to hidden defects must have already been approved by Sofame. Products must be returned within 30 days of the customer notifying of the hidden defect. All returned products must be in perfect storage condition. Any that have been dismantled or used will not be accepted. The costs and risks for returns will always be borne by the customer. Faulty products will be replaced by similar products, meaning products that can be substituted for the products ordered, being of the same quality and complying with the same conditions of use. If the returned products are not replaced, a refund of any sums already paid for them will be issued. Product returns will not give rise to any payment of compensation to the customer.

DURATION OF THE OFFER

Sofame undertakes to maintain stock and/or to keep the capacity to manufacture spare parts on request for products in the ranges with NF Environment (Furniture) certification.

Sofame offers its customers the option of purchasing individual components and products in the ranges with NF Environment (Furniture) certification for the effective period during which they are industrially manufactured. Sofame undertakes to supply the original parts and parts providing equivalent functions, during a period of 5 years following the date on which production of the ranges with NF Environment (Furniture) certification ceases.

PRODUCT PRICES

Products are invoiced at the price given on Sofame's current price list when the products are ordered and the contract concluded. The prices given on that date are firm and final. However, Sofame reserves the right to unilaterally modify the prices in the event of any change in economic circumstances, or its supplier's price increases, competition or general price changes, until the products have been delivered. The parties may agree upon a price review formula when there is a long-term supply contract in place. The prices do not include VAT and are exclusive of taxes. All other applicable fees, taxes and duties in the country importing the goods will be borne by the customer. Furthermore, for every product order Sofame will invoice a fixed amount of €3.50 excl. VAT per invoice for processing fees.

PAYMENT

Unless otherwise agreed or a cash payment being required (specifically for your first order with Sofame or in the event of payment issues for a previous order), invoices issued by Sofame are payable in euros to Sofame head office within 45 days end of month or 60 days net from the date of issue of the invoice. Under this article, a payment means the effective provision of funds to Sofame. Any payment made after the due date set by these general terms and conditions of sale will automatically and without formal notice incur: i) late payment penalties based on the outstanding sum and equal to the interest rate applied by the European Central Bank to its refinancing transactions at the time the balance becomes overdue, plus seven percentage points; ii) payment of a fixed debt collection fee of €40 if the costs are less than that amount, or if they exceed that amount the fee is equal to the cost effectively incurred by Sofame while recovering the debt. Any delay or default on total or partial payment will furthermore give Sofame the right to immediately suspend any current contracts and, for all amounts payable by the customer for whatsoever reason but not yet due, Sofame has the right to demand immediate payment. Sofame reserves the right to automatically terminate the contract resulting from these general terms and conditions should a debt remain unsatisfied 30 days after the issue of a formal request for payment as well as any preceding contracts even if they are not yet due for payment. In such a case, the products will

be returned at Sofame's request, at the customer's risks and expense, without prejudice to any other damages. Sofame also reserves the right to keep any payments and down-payments already made by the customer for whatsoever reason. In case of any payment issues, Sofame also reserves the right to retain any products that have not yet been delivered to, or paid for by, the customer. Invoices must be paid by the means of payment stated on the invoice or agreed at the time of ordering.

RETENTION OF OWNERSHIP CLAUSE

The products are sold under retention of ownership until full payment has been received. Payment means the payment of the price of the products, costs relating to the sale and any interest. These conditions do not preclude the transfer of risk for the products to the customer on delivery. In case of non-payment, customers are responsible for returning unpaid products at their own risk and expense, following receipt of a formal notice by registered letter with acknowledgement of receipt. Any products in the customer's stock are deemed to be those unpaid products. In this case, the sale will be automatically terminated on the date of the return request. Sofame will keep any down payments paid as damages, without prejudice to any other indemnification. The customer will also pay depreciation compensation set at 10% of the price of the products by quarter of possession, until all of those products have been returned. Sofame regaining possession of the products does not exclude other legal procedures that Sofame may initiate. Under no situation may customers supply, pledge or grant securities on the unpaid products. In addition, the customer must immediately inform Sofame of any change in its situation, in particular concerning its declaration of receivership or compulsory liquidation, to enable Sofame to claim ownership of the products.

CONFIDENTIALITY

The customer will keep all the information provided by Sofame before or after the conclusion of the contract strictly confidential and undertake to refrain from disclosing or using it for purposes other than those listed in the contract, even if that information was not marked as confidential when provided. Any documents provided by Sofame remain its sole property and must be returned on request. The confidentiality obligation remains in force after the expiration of this contract. The customer must also ensure that its employees, agents and representatives or sub-representatives also uphold this confidentiality clause. As such, the customer will take all necessary and reasonable measures to prevent any prohibited disclosure or use of its secrets by those people, will require them to comply with the same confidentiality obligation and will provide a direct right of action for Sofame should this obligation be breached. Any breach of the confidentiality obligation will give rise to the payment of damages.

INTELLECTUAL AND INDUSTRIAL PROPERTY

The customer has no intellectual or industrial property rights over the products or packaging. Sofame remains the exclusive owner of all these rights. Any use by the customer, in any manner whatsoever, of the Sofame brand or any other brand belonging to Sofame is strictly forbidden, unless previously and expressly agreed by Sofame. The customer authorises Sofame to have its name appear among the list of commercial customers that Sofame may cite or publish. The delivered contractual products may only be marketed under the Sofame brand or any other brand owned by Sofame, excluding any branding or distinctive sign owned by the customer or any other person. When the contractual products are repacked by the customer, the latter undertakes to clearly show the Sofame brand and distinctive signs, in accordance with the Sofame's instructions, on the packaging and/or wrapping of the delivered contractual products. As such, the customer must rapidly obtain Sofame's prior consent on the terms of affixing the branding and distinctive signs on the wrapping and/or packaging. The customer will inform Sofame as soon as it is aware of any legal action brought against it regarding the intellectual and industrial property of Sofame products, and will not take any step without having expressly referred to Sofame. Sofame has the sole authority to lead the legal proceedings and decide on any step to be taken in terms of the products, with regard to both the courts and any interested third parties. Sofame will indemnify and hold harmless the customer against any conviction, provided that the conditions mentioned above are complied with.

FORCE MAJEURE

If a Force Majeure event occurs, Sofame will in no case be held liable. Events that it could not reasonably be avoided or overcome are considered as force majeure events when their occurrence makes it completely impossible for Sofame to perform its obligations. This includes, but is not limited to: wars, natural disasters, embargoes, notable changes of the political situation in the customer's country, epidemics, events likely to prevent the smooth operation of Sofame's business or that of its suppliers or sub-contractors (such as strikes, lock-outs, total or partial unemployment, raw material shortages, accidents, fires, supply difficulties, and transport interruptions or delays). Should a force majeure event last for more than 60 days, Sofame may automatically ask that the contract automatically lapse by giving notice to the customer by registered letter with acknowledgement of receipt or by facsimile.

JURISDICTION

Any dispute relating to these general terms and conditions of sale, as well as to any sales to which they apply, will, if not amicably settled, be exclusively governed by the commercial court nearest to the Sofame head office in France, even if they are several actions or parties, or in case of third party recourse or summary proceedings.

Valdelia Sofame est adhérent Valdelia.

Les produits destinés au marché français sont assujettis à l'éco-contribution suivant les barèmes fixés par la filière.

48H

 **SOFAME**

Route de Bonnétable
72190 Sargé-lès-Le Mans
FRANCE
Tel : +33 (0)2 43 76 50 00
Fax : +33 (0)2 43 76 26 97

www.sofame.fr

ORDER SHIPPED WITHIN 48 HOURS*

