

SOFAME

The industrial furniture experts

CATALOGUE

48H



Workbenches and workstations



Mobile trolleys



Storage Systems



Computer furniture



Seats



SHIPPING WITHIN 48H

SOFAME : TRICOLORE !

48H SERVICE

TRICOLOUR, first of all because 90% of the items proposed are manufactured at the SOFAME site in Sargé-Lès-Le Mans, France.

TRICOLOUR secondly because, this year, the entire 48H product range is proposed in **a third colour: Light Grey RAL 7035**. A classical and neutral colour which is aesthetically well adapted to any elements of equipment already on site. You now have the possibility to select your workplace equipment from any one of three colours: **Industrial blue RAL 5015, Anthracite grey RAL 7016, Light grey RAL 7035**. Nowhere on the market will you find such a wide range of product references and colours: Only SOFAME is able to propose such a range with shipping within 48 hours.

In total harmony with its continuous improvement policy, this year SOFAME proposes **a widely extended range of accessories** which is, in particular, structured in such a way that the workstation additions can be easily found. Accessories are therefore now classified under headings in accordance with their use:

- Superstructure
- Storage
- Packaging
- Electrification
- IT
- Ergonomic

Major developments also in 2022: thanks to this new organisation of assembly, **the entire SOFAME seating range is now available within 48 hours**. This represents almost 200 different seat models shipped within 48 hours!



New arrivals have also been included in the 48H catalogue such as **the CKS workbench range** with positions itself between the SI range and the PTH range with a workload of 750kg. **The PACKLOG range** specifically designed for packaging/processing has also been incorporated into the 48H catalogue with its accessories. **The new MODULINFO IT cabinet** with its exceptional modularity enabling its adaptation to a wide variety of tasks has also made its entry.

A total of **more than 1150 items is proposed in the 2022 48H catalogue**. Another significant step forward in the field of rapid service with high-quality products.

All these specific advantages offered by the 48H CATALOGUE complete the advantages already proposed by SOFAME: products of a recognised high quality confirmed with the most demanding labels such as **NF MOBILIER TECHNIQUE, NF ENVIRONNEMENT, PEFC, GS; 5-year warranty** (except for surfaces and seating mechanisms: 2 years); continue improvement policy confirmed with **ISO9001 certification Version 2015**; presence of a local technical-sales team; etc.

Unite the advantages of quality and availability offered by the SOFAME products proposed in the **48H CATALOGUE**.

Complete and update your personal data by visiting our website **www.sofame.fr**.

SOFAME



02

COMPANY PRESENTATION

04

WORKBENCHES AND
WORKSTATIONS

TABLE OF CONTENTS

52

MOBILE
TROLLEYS

60

STORAGE
SYSTEMS

74

COMPUTER
FURNITURE

80

SEATS

92

GENERAL TERMS AND
CONDITIONS OF SALE



SOFAME : INDUSTRIAL PERFORMANCE

The cutting-edge and versatile industrial means of SOFAME in Sargé-Lès-Le Mans, Sarthe extends over 7,000 m² of covered surface. The company workforce is particularly dedicated to providing a highly customer-oriented service.

The products are designed in our design office using a highly efficient CAD software package, SOLIDWORKS.

In the factory sheet steel is transformed using laser cutting systems, numerically-controlled folding presses, welding robots, TIG and MIG welding stations and an epoxy powder paint line.

It also transforms wooden panels using circular saws and a numerically-controlled machining centre.

The know-how of SOFAME has been well established for over 35 years

in the design and manufacture of industrial furniture. This know-how is based on a perfect understanding of the customer's needs and development of the appropriate solutions. This applies both to the standard products indicated in the general catalogue as well as products made to measure according to customer specifications. Solidity is the motto of SOFAME.



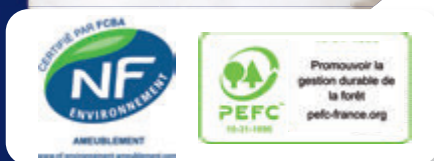
Finally, SOFAME has undertaken the **RSE process** for which it was awarded a bronze medal by **ECOVADIS** for its social and environmental involvements.



SOFAME also guarantees its customers the solidity of its industrial process and its continue improvement policy thanks to **its ISO 9001 version 2015 certification**.



SOFAME also subscribes to **VALDELIA**, an eco-organism the role of which it is to collect and recycle professional furniture at the end of its working life based on a local and free service.



SOFAME products use recyclable materials, represent no health hazard for the users and may be themselves recycled at the end of their working life. These aspects are certified with **the label NF ENVIRONNEMENT** which guarantees the quality and durability of the product, as well as the limitation of possible impacts on the health of persons or the environment. As for the PEFC label, it guarantees that the timber used comes from sustainably managed forests.



The quality of SOFAME products is certified by **the labels NF MOBILIER TECHNIQUE** and **GS** (geprüfte Sicherheit/tested safety) which verify compliance of the products with European standards, but also subjects them to extremely demanding test procedures, far beyond those to which the product will be subjected during its working life.

SOFAME : LOGISTIC PERFORMANCE

SOFAME goes far beyond simply manufacturing products to meet the needs of its customers.

Today, SOFAME proposes the widest range of products for the storage logistics and industrial workspace market.

This range is indicated in the 48H CATALOGUE. The products proposed are shipped within 48 hours. It comprises the more demanded products based on the 80/20 rule.

This service is rendered possible by application of the physical means required and a highly efficient organisation. The physical means are guaranteed with a 10,000m³ purpose-dedicated storage warehouse.



The result is a particularly comprehensive offer enabling the production of coherent installations:

- Workbenches and workstations
- Trolleys
- Storage
- Computer furniture
- Seats

Organisation is based on a lean stock system whereby products are supplied extremely quickly and with the highest level of flexibility in order to meet the needs of the moment and ensure the best product availability. Rapid supply is possible thanks to the high reactivity of our industrial tools and the men and women operating them.

The choice of colours is also exceptional with 3 finishes on stock:



RAL 5015 BI



RAL 7016 GA



RAL 7035 GC

The extent of the offer is vast and comprises most commonly required items:

1,150 references on stock



The catalogue is clear and comprehensive. It enables fast selection without error from a wide range of combinations. It enables ordering of up to 5 items with the same reference to be shipped within 48 hours.

SOFAME is the only manufacturer on the French market in a position to propose such a fast delivery time and wide range of products.

WORKBENCHES & WORKSTATIONS



06

SI FIXED WORKBENCHES,
MECHANICALLY OR ELECTRICALLY
HEIGHT ADJUSTABLE

18

CKS FIXED WORKBENCHES

22

PTH FIXED OR MECHANICALLY
HEIGHT ADJUSTABLE
WORKBENCHES

30/32

REGULOG TABLES ELECTRICALLY
HEIGHT ADJUSTABLE
/
PACKLOG TABLES MECHANICALLY
HEIGHT ADJUSTABLE

36/38

TPL FIXED TABLES
/
WORKBENCH EQUIPMENT



PROPERTIES OF THE METAL STRUCTURE

The frame is made of folded sheet steel, thickness 25/10th.

The legs and ladders are made of welded U-shape folded steel, cross-section 42x80x42mm for the versions SI and SI notch rail, and cross-section 62x87x62 mm for the electric version. The horizontal cross-members are made in a folded U with a cross-section 40x60x40 mm. The frame is finished with epoxy powder paint, oven polymerised at 180°C.

The product is designed in such a way that no screws or bolts are visible after assembly of metal elements, thus providing greater protection of users against possible injury.

The SI frame may be anchored to the floor thanks to the perforated base plate incorporated at the bottom of the leg. This plate helps avoid floor surface indentation.

The mechanically height-adjustable with notch rack version of the SI workbench comprises 2 horizontal cross-members. The worktop is supported with 2 side members in U with a cross-section 50x80x40mm. It enables working height adjustment in steps of 40mm and clamping in place with screws and bolts. The setting stroke ranges from 740 to 1020 mm for the frame excluding the worktop thickness.

The electrically height-adjustable version of the SI workbench comprises 1 horizontal cross-member. The worktop is supported with 1 side member in U with a cross-section 40x50x40mm and an omega H50xD215mm on which the control-box is mounted. The electrically height-adjustable SI enables precision height setting as required.

A set of 4 electrically controlled columns are used to raise the frame and worktop assembly above the structure. A control-box is located under the worktop.

the worktop Supply voltage 230V, 50Hz, cable length 3.2m. The setting stroke ranges from 700 to 1100 mm for the frame excluding the worktop thickness. Maximum off-load speed 38mm/s. The remote-control has a built-in height display and enables memorisation of 3 positions.

ASSOCIATION OF FRAME AND WORKTOP

The worktop is fastened to the frame with a TH 6x25 hexagonal head tie rod and may be placed flush or centred depending on utilisation requirements and constraints.

WORKBENCH EQUIPMENT

The SI workbench may be fitted, in the lower section, with a panel supported by the legs, side ladders and horizontal cross-members. The drawer units may be mounted under the frame of the SI workbench.

Is should be noted that the electrical SI only accepts drawer units with a height of 380mm.

The worktop may be fitted, in the upper section, with uprights designed to receive a variety of accessories (shelves, rails, lighting support, perforated backboards, supports and various dispenser reels, etc.) as well as for placing all tools required by the user at hand under optimum ergonomic conditions.

LABELS

The fixed and electrical SI workbenches are certified Environment standard NF and Technical Furniture standard NF. The admissible load is 1,000Kg for the SI notch rack.

It is certified for the fixed SI at 1,500Kg and certified with a dynamic load of 300kg for the electrical version. The worktops are certified PEFC.



In compliance with standard XPD 65762



SI WORKBENCHES

Fixed SI



SI workbench with 40mm plywood worktop, height 840mm

Frame Colour: ■ Industrial Blue RAL 5015 ■ Anthracite Grey RAL 7016 ■ Light Grey RAL 7035
 Colour Code: BI GA GC

W.	D.	Reference	Colour Code
1200	750	W01 001 0003	BI or GA or GC
1500		W01 001 0004	BI or GA or GC
1800		W01 001 0005	BI or GA or GC
2000		W01 001 0006	BI or GA or GC



SI workbench with 24mm plywood worktop, height 824mm

Frame Colour: ■ Industrial Blue RAL 5015 ■ Anthracite Grey RAL 7016 ■ Light Grey RAL 7035
 Colour Code: BI GA GC

W.	D.	Reference	Colour Code
1200	750	W01 001 0055	BI or GA or GC
1500		W01 001 0056	BI or GA or GC
1800		W01 001 0057	BI or GA or GC
2000		W01 001 0058	BI or GA or GC



SI WORKBENCHES

SI adjustable in height by rack



SI workbench with 40 mm plywood worktop, mechanically height adjustable from 780 to 1060 mm

Frame Colour: ■ Industrial Blue RAL 5015 ■ Anthracite Grey RAL 7016 ■ Light Grey RAL 7035
Colour Code: BI GA GC

W.	D.	Reference	Colour Code
1200	750	W01 001 0029	BI or GA or GC
1500		W01 001 0030	BI or GA or GC
1800		W01 001 0031	BI or GA or GC
2000		W01 001 0032	BI or GA or GC



SI workbench with 24mm plywood worktop, mechanically height adjustable from 764 to 1044mm

Frame Colour: ■ Industrial Blue RAL 5015 ■ Anthracite Grey RAL 7016 ■ Light Grey RAL 7035
Colour Code: BI GA GC

W.	D.	Reference	Colour Code
1200	750	W01 001 0081	BI or GA or GC
1500		W01 001 0082	BI or GA or GC
1800		W01 001 0083	BI or GA or GC
2000		W01 001 0084	BI or GA or GC

SI WORKBENCHES

SI adjustable in height by rack



EQUIPMENT
REFER TO PP. 39 - 51



SI workbench with 40 mm laminated RESITOP high thermal resistance worktop, straight edges, mechanically height adjustable from 780 to 1060 mm

Frame Colour: ■ Industrial Blue RAL 5015 ■ Anthracite Grey RAL 7016 ■ Light Grey RAL 7035
 Colour Code: BI GA GC

W.	D.	Reference	Colour Code
1200	750	W01 001 0185	BI or GA or GC
1500		W01 001 0186	BI or GA or GC
1800		W01 001 0187	BI or GA or GC
2000		W01 001 0188	BI or GA or GC



SI workbench with 30mm laminated RESITOP high thermal resistance worktop, straight edges, mechanically height adjustable from 770 to 1050mm

Frame Colour: ■ Industrial Blue RAL 5015 ■ Anthracite Grey RAL 7016 ■ Light Grey RAL 7035
 Colour Code: BI GA GC

W.	D.	Reference	Colour Code
1200	750	W01 001 0237	BI or GA or GC
1500		W01 001 0238	BI or GA or GC
1800		W01 001 0239	BI or GA or GC
2000		W01 001 0240	BI or GA or GC



SI WORKBENCHES

SI adjustable in height by rack



SI workbench with 38 mm melamine worktop, straight edges, mechanically height adjustable from 778 to 1058 mm

Frame Colour: ■ Industrial Blue RAL 5015 ■ Anthracite Grey RAL 7016 ■ Light Grey RAL 7035
Colour Code: BI GA GC

W.	D.	Reference	Colour Code
1200	750	W01 001 0133	BI or GA or GC
1500		W01 001 0134	BI or GA or GC
1800		W01 001 0135	BI or GA or GC
2000		W01 001 0136	BI or GA or GC



SI workbench with 28 mm melamine worktop, straight edges, mechanically height adjustable from 768 to 1048 mm

Frame Colour: ■ Industrial Blue RAL 5015 ■ Anthracite Grey RAL 7016 ■ Light Grey RAL 7035
Colour Code: BI GA GC

W.	D.	Reference	Colour Code
1200	750	W01 001 0623	BI or GA or GC
1500		W01 001 0624	BI or GA or GC
1800		W01 001 0625	BI or GA or GC
2000		W01 001 0626	BI or GA or GC

SI WORKBENCHES

SI electrically height adjustable



EQUIPMENT
REFER TO PP. 39 - 51



SI workbenches with 40 mm plywood worktop, electrically height adjustable from 740 to 1140 mm

Frame Colour: ■ Industrial Blue RAL 5015 ■ Anthracite Grey RAL 7016 ■ Light Grey RAL 7035
Colour Code: BI GA GC

W.	D.	Reference	Colour Code
1200	750	W01 001 0802	BI or GA or GC
1500		W01 001 0803	BI or GA or GC
1800		W01 001 0804	BI or GA or GC
2000		W01 001 0805	BI or GA or GC



SI workbenches with 24 mm plywood worktop, electrically height adjustable from 724 to 1124 mm

Frame Colour: ■ Industrial Blue RAL 5015 ■ Anthracite Grey RAL 7016 ■ Light Grey RAL 7035
Colour Code: BI GA GC

W.	D.	Reference	Colour Code
1200	750	W01 001 0815	BI or GA or GC
1500		W01 001 0816	BI or GA or GC
1800		W01 001 0817	BI or GA or GC
2000		W01 001 0818	BI or GA or GC

EQUIPMENT
REFER TO PP. 39 - 51



SI WORKBENCHES

SI electrically height adjustable



SI workbench with 40 mm laminated RESITOP high thermal resistance worktop, straight edges, electrically height adjustable from 740 to 1140 mm

Frame Colour: ■ Industrial Blue RAL 5015 ■ Anthracite Grey RAL 7016 ■ Light Grey RAL 7035
Colour Code: BI GA GC

W.	D.	Reference	Colour Code
1200	750	W01 001 0828	BI or GA or GC
1500		W01 001 0829	BI or GA or GC
1800		W01 001 0830	BI or GA or GC
2000		W01 001 0831	BI or GA or GC



SI workbench with 30 mm laminated RESITOP high thermal resistance worktop, straight edges, electrically height adjustable from 730 to 1130 mm

Frame Colour: ■ Industrial Blue RAL 5015 ■ Anthracite Grey RAL 7016 ■ Light Grey RAL 7035
Colour Code: BI GA GC

W.	D.	Reference	Colour Code
1200	750	W01 001 0841	BI or GA or GC
1500		W01 001 0842	BI or GA or GC
1800		W01 001 0843	BI or GA or GC
2000		W01 001 0844	BI or GA or GC

SI WORKBENCHES

SI electrically height adjustable



EQUIPMENT
REFER TO PP. 39 - 51



SI workbench with 38 mm melamine worktop, straight edges, electrically height adjustable from 738 to 1138 mm

Frame Colour: ■ Industrial Blue RAL 5015 ■ Anthracite Grey RAL 7016 ■ Light Grey RAL 7035
Colour Code: BI GA GC

W.	D.	Reference	Colour Code
1200	750	W01 001 0867	BI or GA or GC
1500		W01 001 0868	BI or GA or GC
1800		W01 001 0869	BI or GA or GC
2000		W01 001 0870	BI or GA or GC



SI workbench with 28mm melamine worktop, straight edges, electrically height adjustable from 728 to 1128mm

Frame Colour: ■ Industrial Blue RAL 5015 ■ Anthracite Grey RAL 7016 ■ Light Grey RAL 7035
Colour Code: BI GA GC

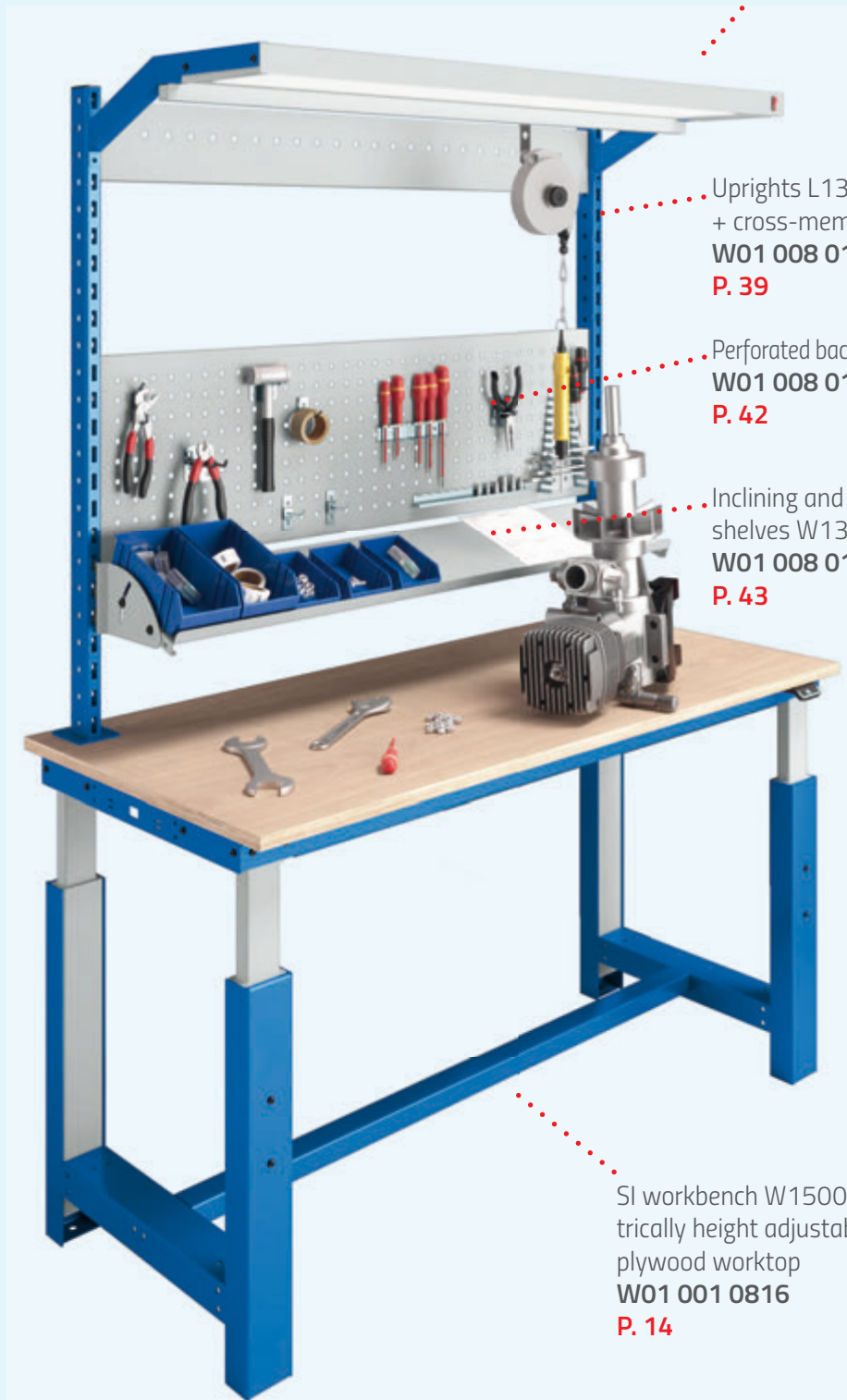
W.	D.	Reference	Colour Code
1200	750	W01 001 0880	BI or GA or GC
1500		W01 001 0881	BI or GA or GC
1800		W01 001 0882	BI or GA or GC
2000		W01 001 0883	BI or GA or GC

SI WORKBENCHES

48H

LED lighting L1300
and supports
W01 008 0278
P. 48

EXAMPLE OF COMPOSITION



Uprights L1360xH1200
+ cross-member
W01 008 0111
P. 39

Perforated backboard W1300xH395
W01 008 0122
P. 42

Inclining and depth-adjustable
shelves W1300xD350
W01 008 0128
P. 43

SI workbench W1500xD750, elec-
trically height adjustable 24mm
plywood worktop
W01 001 0816
P. 14

EQUIPMENT
REFER TO PP. 39 - 51

PROPERTIES OF THE METAL STRUCTURE

The frame is made of folded sheet steel, thickness 25/10th. The legs or ladders are made of welded tubes with a cross-section of 60x60mm and the cross-members are made of folded sheet steel, thickness 25/10th, cross-section 80x60x40mm. The horizontal, longitudinal cross-members are made in a folded U with a cross-section 40x60x40 mm. The frame is finished with epoxy powder paint, oven polymerised at 180°C.

The product is designed in such a way that no screws or bolts are visible after assembly of metal elements, thus providing greater protection of users against possible injury.

ASSOCIATION OF FRAME AND WORKTOP

The CKS workbench frame may receive 40 and 24mm beech plywood worktops, 40 and 30mm RESITOP worktops and 38 and 28mm melamine worktops.

The worktop is fastened to the frame with a TH 6x25 hexagonal head tie rod and may be placed flush or centred depending on utilisation requirements and constraints.

WORKBENCH EQUIPMENT

The CKS workbench worktop may be fitted, in the upper section, with uprights designed to receive a variety of accessories (shelves, rails, lighting support, perforated backboards, supports and various dispenser reels, etc.) as well as for placing all tools required by the user at hand under optimum ergonomic conditions.

LABELS

The worktops are certified PEFC.



In compliance with standard XPD 65762



CKS WORKBENCHES



CKS workbench with 40mm plywood worktop, height 840mm

Frame Colour: ■ Industrial Blue RAL 5015 ■ Anthracite Grey RAL 7016 ■ Light Grey RAL 7035
 Colour Code: BI GA GC

NEW

W.	D.	Reference	Colour Code
1200	750	W01 016 0003	BI or GA or GC
1500		W01 016 0004	BI or GA or GC
1800		W01 016 0005	BI or GA or GC
2000		W01 016 0006	BI or GA or GC



CKS workbench with 24mm plywood worktop, height 824mm

Frame Colour: ■ Industrial Blue RAL 5015 ■ Anthracite Grey RAL 7016 ■ Light Grey RAL 7035
 Colour Code: BI GA GC

NEW

W.	D.	Reference	Colour Code
1200	750	W01 016 0016	BI or GA or GC
1500		W01 016 0017	BI or GA or GC
1800		W01 016 0018	BI or GA or GC
2000		W01 016 0019	BI or GA or GC

CKS WORKBENCHES



EQUIPMENT
REFER TO PP. 39 - 51



CKS workbench with 40mm laminated worktop, height 840mm

Frame Colour: ■ Industrial Blue RAL 5015 ■ Anthracite Grey RAL 7016 ■ Light Grey RAL 7035
Colour Code: BI GA GC

NEW

W.	D.	Reference	Colour Code
1200	750	W01 016 0029	BI or GA or GC
1500		W01 016 0030	BI or GA or GC
1800		W01 016 0031	BI or GA or GC
2000		W01 016 0032	BI or GA or GC



CKS workbench with 30mm laminated worktop, height 830mm

Frame Colour: ■ Industrial Blue RAL 5015 ■ Anthracite Grey RAL 7016 ■ Light Grey RAL 7035
Colour Code: BI GA GC

NEW

W.	D.	Reference	Colour Code
1200	750	W01 016 0042	BI or GA or GC
1500		W01 016 0043	BI or GA or GC
1800		W01 016 0044	BI or GA or GC
2000		W01 016 0045	BI or GA or GC

EQUIPMENT
REFER TO PP. 39 - 51



CKS WORKBENCHES



CKS workbench with 38mm melamine worktop, height 838mm

Frame Colour: ■ Industrial Blue RAL 5015 ■ Anthracite Grey RAL 7016 ■ Light Grey RAL 7035
 Colour Code: BI GA GC

NEW

W.	D.	Reference	Colour Code
1200	750	W01 016 0055	BI or GA or GC
1500		W01 016 0056	BI or GA or GC
1800		W01 016 0057	BI or GA or GC
2000		W01 016 0058	BI or GA or GC



CKS workbench with 28mm melamine worktop, height 828mm

Frame Colour: ■ Industrial Blue RAL 5015 ■ Anthracite Grey RAL 7016 ■ Light Grey RAL 7035
 Colour Code: BI GA GC

NEW

W.	D.	Reference	Colour Code
1200	750	W01 016 0068	BI or GA or GC
1500		W01 016 0069	BI or GA or GC
1800		W01 016 0070	BI or GA or GC
2000		W01 016 0071	BI or GA or GC

PTH WORKBENCH



PROPERTIES OF THE METAL STRUCTURE

The frame is composed of a steel tube structure, thickness 20/10th and folded sheet steel, thickness 25/10th.

The legs and ladders are made of welded tubes with a cross-section of 40x40mm and the horizontal cross-members are made of sheet steel folded in a U section of 40x60x40mm. There are 3 cross-members which link the ladders: two in the upper section under the worktop and one in the lower section. The frame is finished with epoxy powder paint, oven polymerised at 180°C.

The product is designed in such a way that no screws or bolts are visible after assembly of metal elements, thus providing greater protection of users against possible injury. The legs and ladder tubes

are foreseen with plastic end caps to prevent floor indentation.

The mechanically height adjustable with notch rail version of the PTH workbench enables adjustment of the working height. The notches spaced every 20mm enable easy height adjustment, as well as identification. This sliding adjustment system is easy to use thanks to the 4 screws which do not require removal. The setting stroke ranges from 740 to 1020 mm for the frame excluding the worktop thickness.

An optional load support sheet is proposed for frames with a width of less than 1800mm.

ASSOCIATION OF FRAME AND WORKTOP

The worktop is fastened to the frame with a TH 6x25 hexagonal head tie rod and may be placed flush or centred depending on utilisation requirements and constraints.

OPTIONS

The legs may be equipped with height-adjustment jacks (stroke 30mm) or a set of 4 castor rollers, diameter 100mm, 2 of which with brake. The PTH workbench may be fitted with a melamine worktop.

WORKBENCH EQUIPMENT

The worktop may be fitted, in the upper section, with uprights designed to receive a variety of accessories (shelves, rails, lighting support, perforated backboards, supports and various dispenser reels, etc.) as well as for placing all tools required by the user at hand under optimum ergonomic conditions.

LABELS

The PTH workbench is certified NF Environment and NF Technical furniture.

The worktops are certified PEFC.

The certified admissible load for the fixed PTH is 500Kg and 300Kg for the notch rail adjustable version.



fixed version:
certified load



mechanical
version



In compliance with standard XPD 65762





fixed version:
certified load



PTH WORKBENCHES

Fixed PTH



PTH workbench with 40mm plywood worktop, height 840 mm

Frame Colour: ■ Industrial Blue RAL 5015 ■ Anthracite Grey RAL 7016 ■ Light Grey RAL 7035
Colour Code: BI GA GC

W.	D.	Reference	Colour Code
1200	750	W01 002 0003	BI or GA or GC
1500		W01 002 0004	BI or GA or GC
1800		W01 002 0005	BI or GA or GC
2000		W01 002 0006	BI or GA or GC



PTH workbench with 24mm plywood worktop, height 824 mm

Frame Colour: ■ Industrial Blue RAL 5015 ■ Anthracite Grey RAL 7016 ■ Light Grey RAL 7035
Colour Code: BI GA GC

W.	D.	Reference	Colour Code
1200	750	W01 002 0016	BI or GA or GC
1500		W01 002 0017	BI or GA or GC
1800		W01 002 0018	BI or GA or GC
2000		W01 002 0019	BI or GA or GC

PTH WORKBENCHES

Fixed PTH



EQUIPMENT
REFER TO PP. 39 - 51



PTH workbench with 40mm laminated RESITOP high thermal resistance worktop, straight edges, height 840mm

Frame Colour: ■ Industrial Blue RAL 5015 ■ Anthracite Grey RAL 7016 ■ Light Grey RAL 7035
Colour Code: BI GA GC

W.	D.	Reference	Colour Code
1200	750	W01 002 0068	BI or GA or GC
1500		W01 002 0069	BI or GA or GC
1800		W01 002 0070	BI or GA or GC
2000		W01 002 0071	BI or GA or GC



PTH workbench with 30mm laminated RESITOP high thermal resistance worktop, straight edges, height 830mm

Frame Colour: ■ Industrial Blue RAL 5015 ■ Anthracite Grey RAL 7016 ■ Light Grey RAL 7035
Colour Code: BI GA GC

W.	D.	Reference	Colour Code
1200	750	W01 002 0081	BI or GA or GC
1500		W01 002 0082	BI or GA or GC
1800		W01 002 0083	BI or GA or GC
2000		W01 002 0084	BI or GA or GC

EQUIPMENT
REFER TO PP. 39 - 51



PTH WORKBENCHES

Fixed PTH



PTH workbench with 38mm melamine worktop, straight edges, height 838 mm

Frame Colour: ■ Industrial Blue RAL 5015 ■ Anthracite Grey RAL 7016 ■ Light Grey RAL 7035
Colour Code: BI GA GC

W.	D.	Reference	Colour Code
1200	750	W01 002 0029	BI or GA or GC
1500		W01 002 0030	BI or GA or GC
1800		W01 002 0031	BI or GA or GC
2000		W01 002 0032	BI or GA or GC



PTH workbench with 28mm melamine worktop, straight edges, height 828 mm

Frame Colour: ■ Industrial Blue RAL 5015 ■ Anthracite Grey RAL 7016 ■ Light Grey RAL 7035
Colour Code: BI GA GC

W.	D.	Reference	Colour Code
1200	750	W01 002 0042	BI or GA or GC
1500		W01 002 0043	BI or GA or GC
1800		W01 002 0044	BI or GA or GC
2000		W01 002 0045	BI or GA or GC



PTH workbench with 19mm melamine worktop, straight edges, height 819 mm

Frame Colour: ■ Industrial Blue RAL 5015 ■ Anthracite Grey RAL 7016 ■ Light Grey RAL 7035
Colour Code: BI GA GC

W.	D.	Reference	Colour Code
1200	750	W01 002 0055	BI or GA or GC
1500		W01 002 0056	BI or GA or GC
1800		W01 002 0057	BI or GA or GC
2000		W01 002 0058	BI or GA or GC

PTH WORKBENCHES

PTH mechanically height adjustable



EQUIPMENT
REFER TO PP. 39 - 51



PTH workbench with 40 mm plywood worktop, mechanically height adjustable from 780 to 1060 mm

Frame Colour: ■ Industrial Blue RAL 5015 ■ Anthracite Grey RAL 7016 ■ Light Grey RAL 7035
Colour Code: BI GA GC

W.	D.	Reference	Colour Code
1200	750	W01 002 0243	BI or GA or GC
1500		W01 002 0244	BI or GA or GC
1800		W01 002 0245	BI or GA or GC
2000		W01 002 0246	BI or GA or GC



PTH workbench with 24 mm plywood worktop, mechanically height adjustable from 764 to 1044 mm

Frame Colour: ■ Industrial Blue RAL 5015 ■ Anthracite Grey RAL 7016 ■ Light Grey RAL 7035
Colour Code: BI GA GC

W.	D.	Reference	Colour Code
1200	750	W01 002 0256	BI or GA or GC
1500		W01 002 0257	BI or GA or GC
1800		W01 002 0258	BI or GA or GC
2000		W01 002 0259	BI or GA or GC

EQUIPMENT
REFER TO PP. 39 - 51



PTH WORKBENCHES

PTH mechanically height adjustable



PTH workbench with 40 mm laminated RESITOP high thermal resistance worktop, straight edges, mechanically height adjustable from 780 to 1060 mm

Frame Colour: ■ Industrial Blue RAL 5015 ■ Anthracite Grey RAL 7016 ■ Light Grey RAL 7035
Colour Code: BI GA GC

W.	D.	Reference	Colour Code
1200	750	W01 002 0269	BI or GA or GC
1500		W01 002 0270	BI or GA or GC
1800		W01 002 0271	BI or GA or GC
2000		W01 002 0272	BI or GA or GC



PTH workbench with 30 mm laminated RESITOP high thermal resistance worktop, straight edges, mechanically height adjustable from 770 to 1050 mm

Frame Colour: ■ Industrial Blue RAL 5015 ■ Anthracite Grey RAL 7016 ■ Light Grey RAL 7035
Colour Code: BI GA GC

W.	D.	Reference	Colour Code
1200	750	W01 002 0282	BI or GA or GC
1500		W01 002 0283	BI or GA or GC
1800		W01 002 0284	BI or GA or GC
2000		W01 002 0285	BI or GA or GC

PTH WORKBENCHES

PTH mechanically height adjustable



EQUIPMENT
REFER TO PP. 39 - 51



PTH workbench with 38 mm melamine worktop, straight edges, mechanically height adjustable from 778 to 1058 mm

Frame Colour: ■ Industrial Blue RAL 5015 ■ Anthracite Grey RAL 7016 ■ Light Grey RAL 7035
Colour Code: BI GA GC

W.	D.	Reference	Colour Code
1200	750	W01 002 0308	BI or GA or GC
1500		W01 002 0309	BI or GA or GC
1800		W01 002 0310	BI or GA or GC
2000		W01 002 0311	BI or GA or GC



PTH workbench with 28mm melamine worktop, straight edges, mechanically height adjustable from 768 to 1048mm

Frame Colour: ■ Industrial Blue RAL 5015 ■ Anthracite Grey RAL 7016 ■ Light Grey RAL 7035
Colour Code: BI GA GC

W.	D.	Reference	Colour Code
1200	750	W01 002 0321	BI or GA or GC
1500		W01 002 0322	BI or GA or GC
1800		W01 002 0323	BI or GA or GC
2000		W01 002 0324	BI or GA or GC



PTH workbench with 19mm melamine worktop, straight edges, mechanically height adjustable from 759 to 1039mm

Frame Colour: ■ Industrial Blue RAL 5015 ■ Anthracite Grey RAL 7016 ■ Light Grey RAL 7035
Colour Code: BI GA GC

W.	D.	Reference	Colour Code
1200	750	W01 002 0334	BI or GA or GC
1500		W01 002 0335	BI or GA or GC
1800		W01 002 0336	BI or GA or GC
2000		W01 002 0337	BI or GA or GC

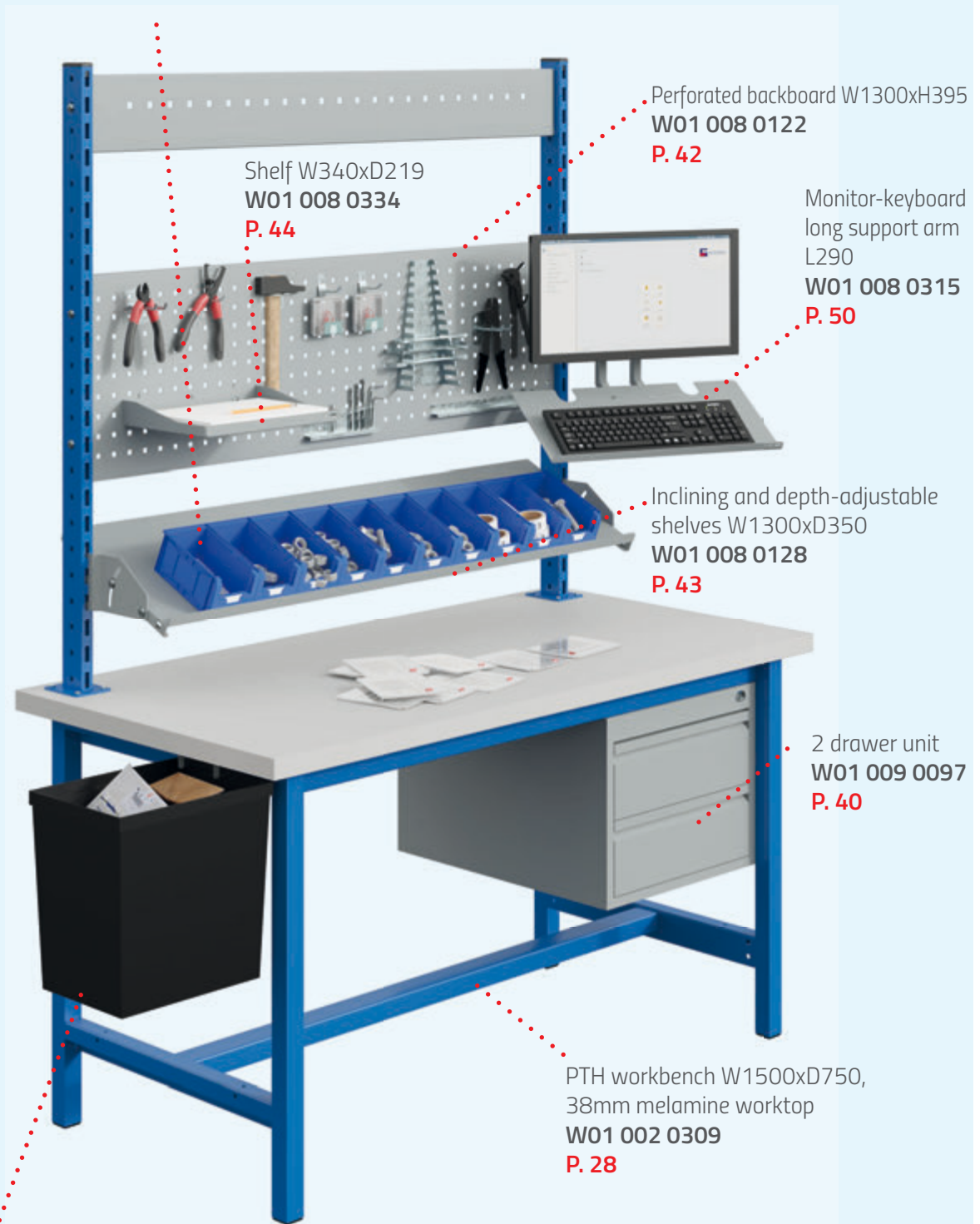
PTH WORKBENCHES



EXAMPLE OF COMPOSITION

Various tool-holder accessories

P. 45



Shelf W340xD219
W01 008 0334

P. 44

Perforated backboard W1300xH395
W01 008 0122

P. 42

Monitor-keyboard
long support arm
L290

W01 008 0315

P. 50

Inclining and depth-adjustable
shelves W1300xD350

W01 008 0128

P. 43

2 drawer unit

W01 009 0097

P. 40

PTH workbench W1500xD750,
38mm melamine worktop

W01 002 0309

P. 28

Rubbish bin 25L
W01 008 0349

P. 45

EQUIPMENT
REFER TO PP.39-51

PROPERTIES OF THE METAL STRUCTURE

The electrically height adjustable REGULOG table rests on 2 sheet metal bases, thickness 40/10th and tube 25 x 25 each equipped with 2 height setting jacks. These two bases support the 2 electrically-controlled telescopic lift columns used by the operator for precise height adjustment. The sheet metal cross-member, thickness 12/10th, located between the two columns ensure excellent frame rigidity. A control-box is located under the worktop. The height adjustment range is from 700 to 1100mm excluding the worktop thickness.

The frame is finished with epoxy powder paint, oven polymerised at 180°C.

Remote-control:

The specificity of the remote-control is its combination of modern design and intuitive and practical use. The raise and lower buttons have been designed for touch-recognition without the need to look at the buttons during operation.

This remote-control is foreseen with a 1700mm long cable with RJ45 plug.

ASSOCIATION OF FRAME AND WORKTOP

The frame of the REGULOG table may receive 19mm or 28mm melamine worktops, as well as 24mm beech plywood worktops. The worktop is fastened to the frame with wood screws VBA TB 5x20.

Design and Modularity:

The elegant design combines perfect stability and rigidity with a high-quality table finish. This table offers maximum flexibility and modularity rendering it perfectly suited to the needs of all tasks and operators. Table supplied in a fast and easy to assemble kit.

WORKBENCH EQUIPMENT

The following equipment is available for the upper section: superstructure uprights, perforated panels, shelves, grab container support rails, monitor supports, electric strips.

LABELS

The worktops are certified PEFC.

The evenly distributed admissible load for the REGULOG is 140kg dynamic.



In compliance with standard XPD 65762

EQUIPMENT
REFER TO PP.39 - 51



REGULOG TABLES



REGULOG table with 28 mm melamine worktop, electrically height adjustable from 728 to 1128 mm

Frame Colour: Light Grey RAL 7035
Colour Code: GC

W.	D.	Reference	Colour Code
1200	750	W01 014 0029	GC
1500		W01 014 0030	GC
1800		W01 014 0031	GC
2000		W01 014 0032	GC



REGULOG table with 24 mm melamine worktop, electrically height adjustable from 724 to 1124 mm

Frame Colour: Light Grey RAL 7035
Colour Code: GC

W.	D.	Reference	Colour Code
1200	750	W01 014 003	GC
1500		W01 014 004	GC
1800		W01 014 005	GC
2000		W01 014 006	GC



REGULOG table with 19mm melamine worktop, electrically height adjustable from 719 to 1119mm

Frame Colour: Light Grey RAL 7035
Colour Code: GC

W.	D.	Reference	Colour Code
1200	750	W01 014 0016	GC
1500		W01 014 0017	GC
1800		W01 014 0018	GC
2000		W01 014 0019	GC

PACKLOG WORKSTATIONS



PROPERTIES OF THE METAL STRUCTURE

The frame is composed of a folded steel tube structure, thickness 20/10th, folded sheet steel, thickness 25/10th and sheet steel, thickness 12/10th.

The legs and ladders are made of welded tubes with a cross-section of 40x40mm and the horizontal cross-members are made of a folded U-section of 40x60x40mm. There are 3 cross-members which link the ladders: two in the upper section under the worktop and one in the lower section. A load support sheet linking the 2 ladders is fastened at the rear top of the workstation.

The notches spaced every 20mm enable easy height adjustment, as well as identification. This sliding system is easy to use thanks to the 4 screws which do not require removal. The setting stroke ranges from 740 to 1020 mm for the frame excluding the worktop thickness.

The frame is finished with epoxy powder paint, oven polymerised at 180°C. The legs and ladder tubes are foreseen with plastic end caps to prevent floor indentation.

ASSOCIATION OF FRAME AND WORKTOP

The PACKLOG workstation frame may receive 40 and 24mm beech plywood worktops, 30mm Resitop worktops and 28mm melamine worktops.

The worktop is fastened to the frame with wood screws VBA TB 5x20.

WORKBENCH EQUIPMENT

The rear uprights on the PACKLOG workstation enable addition of the equipment required for each specific task. In particular, a complete range of equipment specifically adapted to the task of packaging, such as: Reel under the workbench, cutting bar, Zebra printer support, various shelves, shelves with box dividers.



In compliance with standard XPD 65762

PACKLOG WORKSTATIONS

PACKLOG mechanically height adjustable



EQUIPMENT
REFER TO PP. 39 - 51



PACKLOG workstation with 30mm laminated RESITOP high thermal resistance worktop, height adjustable from 770mm to 1050mm

Frame Colour: ■ Industrial Blue RAL 5015 ■ Anthracite Grey RAL 7016 ■ Light Grey RAL 7035
Colour Code: BI GA GC

NEW

W.	D.	Reference	Colour Code
1200	750	W01 002 0590	BI or GA or GC
1500		W01 002 0591	BI or GA or GC
1800		W01 002 0592	BI or GA or GC
2000		W01 002 0593	BI or GA or GC



PACKLOG workstation with 28mm melamine worktop, height adjustable from 768 to 1048mm

Frame Colour: ■ Industrial Blue RAL 5015 ■ Anthracite Grey RAL 7016 ■ Light Grey RAL 7035
Colour Code: BI GA GC

NEW

W.	D.	Reference	Colour Code
1200	750	W01 002 0600	BI or GA or GC
1500		W01 002 0601	BI or GA or GC
1800		W01 002 0602	BI or GA or GC
2000		W01 002 0603	BI or GA or GC

PACKLOG

48H

EXAMPLE OF COMPOSITION



Shelves with depth-adjustable
box dividers W1300

W01 008 0344

P. 46

PACKLOG uprights
L1360xH1200

W01 008 0360

P. 39

Inclining and depth-adjustable
shelves W1300xD350

W01 008 0128

P. 43

Reel bar L1300

W01 008 0304

P. 46

PACKLOG table W1500xD750 with
28mm melamine worktop

W01 002 0601

P. 34

Cutting guide bar

L1300

W01 008 0340

P. 46

EQUIPMENT
REFER TO PP. 39 - 51

PROPERTIES OF THE METAL STRUCTURE

The frame is composed of a steel tube structure, thickness 20/10th and folded sheet steel, thickness 25/10th.

The legs and ladders are made of welded tubes with a section of 40x40mm and 2 upper horizontal cross-members made of sheet steel folded in a U section of 40x60x40 mm.

The frame is finished with epoxy powder paint, oven polymerised at 180°C.

The product is designed in such a way that no screws or bolts are visible after assembly of metal elements, thus providing greater protection of users against possible injury.

The legs and ladder tubes are foreseen with plastic end caps to prevent floor indentation.

ASSOCIATION OF FRAME AND WORKTOP

The frame of the TPL table may receive 24mm beech plywood worktops and 19mm melamine worktops.

The worktop is fastened to the frame with a VBA TB 5x20 cross-head screws and may be placed flush or centred depending on utilisation requirements and constraints.

WORKBENCH EQUIPMENT

The worktop may be fitted, in the upper section, with uprights designed to receive a variety of equipment (shelves, rails, lighting support, perforated backboards, supports and various dispenser reels, etc.) as well as for placing all tools required by the user at hand under optimum ergonomic conditions.

LABELS

The worktops are certified PEFC.

The maximum admissible load for the TPL table is 250Kg.



In compliance with standard XPD 65762

EQUIPMENT
REFER TO PP.39 - 51



TPL WORKSTATIONS



TPL workstation with 24 mm plywood worktop, height 824 mm

Frame Colour: ■ Industrial Blue RAL 5015 ■ Anthracite Grey RAL 7016 ■ Light Grey RAL 7035
Colour Code: BI GA GC

W.	D.	Reference	Colour Code
1200	750	W01 003 0001	BI or GA or GC
1500		W01 003 0002	BI or GA or GC
2000		W01 003 0003	BI or GA or GC



TPL workstation with 19 mm melamine worktop, straight edges, height 819 mm

Frame Colour: ■ Industrial Blue RAL 5015 ■ Anthracite Grey RAL 7016 ■ Light Grey RAL 7035
Colour Code: BI GA GC

W.	D.	Reference	Colour Code
1200	750	W01 003 0004	BI or GA or GC
1500		W01 003 0005	BI or GA or GC
2000		W01 003 0006	BI or GA or GC

EQUIPMENT

Elements of equipment complete the workbenches and workstations in order to provide them with the capacity to fulfil all required functions, organisation, productivity and increased ergonomics.



39

SUPERSTRUCTURE
EQUIPMENT

40

STORAGE
EQUIPMENT

46

PACKAGING
EQUIPMENT

48

ELECTRICAL
EQUIPMENT

50

COMPUTER
EQUIPMENT

51

ERGONOMIC
EQUIPMENT



WORKBENCH EQUIPMENT

Superstructure equipment



Frame Colour: ■ Industrial Blue RAL 5015
Colour Code: BI

■ Anthracite Grey RAL 7016
GA

■ Light Grey RAL 7035
GC

	Model	Hight	Reference	Colour Code
1	2 uprights + 1 W865 crossbar for min. W. 1000/1200 workbench	1200	W010080110	BI or GA or GC
2	2 uprights + 1 W1300 crossbar for min. W. 1500 workbench		W010080111	
3	3 uprights + 2 W635 crossbars for min. W. 1500 workbench		W010080112	
	1 upright	W01 008 0370		
	1 upright	W01 008 0371		
4	2 uprights without crossbar	600	W01 008 0115	
	2 uprights PACKLOG	1200	W01 008 0360	
	3 uprights PACKLOG		W01 008 0361	
	1 upright PACKLOG		W01 008 0372	



Galvanised shelves for SI workbenches

Galvanised lower shelves may be adapted to the SI workbenches, resting on the lateral ladder cross-members and on the longitudinal central cross-member and are foreseen with notches ensuring adequate hold between the leg supports. They are made of galvanised sheet steel, thickness 15/10th. The thickness of the front and rear folds is 60mm.

W.	D.	Reference
1200	750	W010010471
1500		W010010472
1800		W010010473
2000		W010010474



19mm melamine shelves for PTH workbenches

The melamine lower shelves may be adapted to the PTH workbenches, resting on the lateral ladder cross-members and on the longitudinal central cross-member. They are made of chipboard panels covered with a melamine finish with a thickness of 19mm and 2mm ABS edges.

W.	D.	Reference	Colour Code
1200	750	W010020133	BI ou GA
1500		W010020134	BI ou GA
1800		W010020135	BI ou GA
2000		W010020136	BI ou GA

WORKBENCH EQUIPMENT

Storage equipment



Suspended drawer units and drawer cabinets

Frame Colour: Light Grey RAL 7035
 Colour Code: GC

The drawer units may be suspended under the workbench frame using the fastening plates provided. They are made of folded sheet steel, thickness 10/10th. The body and drawers are spot-weld assembled. The front panel of the drawers is foreseen with an integrated pull grip. The drawers are mounted on total-extraction, telescopic ball sliders. The selective opening of drawers avoids simultaneous opening of several drawers and risk of bumping. The drawers are locked with a central locking system. Overall dimensions: D600xW460mm. Heights: 220mm for 1 drawer, 370mm for 2 drawers, 520mm for 3 drawers. Drawer front: H150mm. The useful dimensions of the drawers are: D560xW530xH130mm (sides and rear H60mm). Max. load per drawer: 50kg. Epoxy powder paint finish, oven polymerised at 180°C.

Model	Height	Reference	Colour Code
1 drawer unit H150	220	W01 009 0096	GC
2 drawer unit H150	370	W01 009 0097	GC
3 drawer unit H150	520	W01 009 0098	GC
Pedestal box 1 drawer H75 + 4 H150	800	W01 009 0099	GC



NEW

Mobility kit for 3 or 5 drawer units

Frame Colour: Light Grey RAL 7035
 Colour Code: GC

The mobility kit consists of a top in 10/10th folded sheet steel and a set of 4 swivel castors with a diameter of 100mm, 2 of which are equipped with brakes. It is mounted on the drawer units to make it mobile. Epoxy powder paint finish, oven polymerised at 180°C.

Reference	Colour Code
W010090100	GC



WORKBENCH EQUIPMENT

Storage equipment

Upper Shelf Unit



Frame Colour: Light Grey RAL 7035
Colour Code: GC

Made of folded sheet steel, thickness 15/10th.
2 removable side panels enabling the passage of cables. Cables passage to the exterior, diameter 35mm. H650xD400mm. Max. load: 100kg. Epoxy powder paint finish, oven polymerised at 180°.

D.	Overall length	Usable length	Reference	Colour Code
400	1200	1030	W010080095	GC
	1500	1305	W010080096	GC
	1800	1605	W010080097	GC
	2000	1805	W010080098	GC

Intermediate shelves for upper shelf unit



Frame Colour: Light Grey RAL 7035
Colour Code: GC

Made of folded sheet steel, thickness 15/10th. Height-adjustable shelves in steps of 120mm (at 170, 290, 410 or 530mm above the workbench worktop height) between the shelf extension side elements. H60xD400mm. Max. load: 50kg. Epoxy powder paint finish, oven polymerised at 180°.

D.	Overall length	Usable length	Reference	Colour Code
400	1200	1030	W010080099	GC
	1500	1305	W010080100	GC
	1800	1605	W010080101	GC
	2000	1805	W010080102	GC



Worktop base cabinet with roller shutter door D250 x H800

Frame Colour: Light Grey RAL 7035
Colour Code: GC

Body made of folded sheet steel, thickness 10/10th, spot-weld assembled. Roller shutter doors with PVC blades opening to each side.

Useful height: 760mm (passing 700mm). Useful depth: 155mm.

Useful width W1500: 1380mm; W2000: 1880mm.

The rear panel is foreseen with perforations of 10x10mm in steps of 38mm for hooking on tool holders with a maximum depth of 150mm. Epoxy powder paint body finish, oven polymerised at 180°.

Overall length	Reference	Colour Code
1500	W010080107	GC
2000	W010080108	GC

Perforated upper backboard H585mm, with two uprights



Frame Colour: Industrial Blue RAL 5015 Anthracite Grey RAL 7016 Light Grey RAL 7035
Colour Code: BI GA GC

Uprights H600mm made of perforated steel pipe, cross-section 60x30mm. Perforations H30xW10mm in steps of 50mm on the front and rear sides, H10xW10mm in steps of 50mm on the sides.

Plate-fastened on the workbench worktop.

Perforated sheet steel panel, thickness 10/10th. Perforations of 10x10mm in steps of 38mm for hooking on tool holders. Epoxy powder paint finish, oven polymerised at 180°.

For workbench length	Reference	Colour Code
1200	W010080116	BI or GA or GC
1500	W010080117	BI or GA or GC
1800	W010080118	BI or GA or GC
2000	W010080119	BI or GA or GC

WORKBENCH EQUIPMENT

Storage equipment

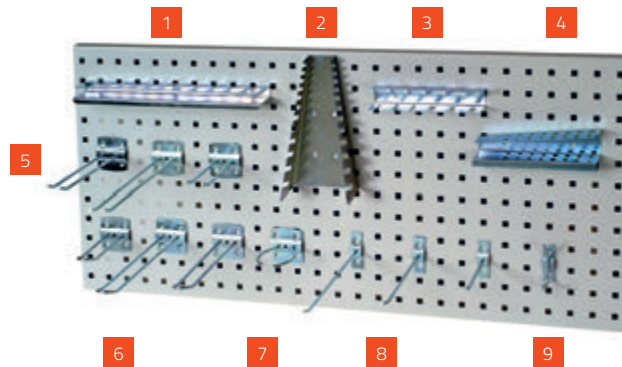


Perforated backboards mounted between the superstructure uprights

Frame Colour: Light Grey RAL 7035
 Colour Code: GC

Perforated backboard with square holes 10x10 every 38mm enabling hooking on of accessories
 Tool holder panel depth: 30mm

Lenght	Height	Reference
865	375	W 01 008 0121
1300	375	W 01 008 0122



Tool-holder accessories for perforated backboards

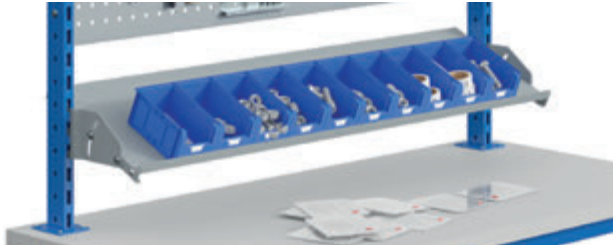
Holder for tools such as screwdrivers, spanners, BTR spanners, sockets, blister pack, etc. Made of galvanised steel. They simply clip into the perforations.

The worktop base cabinet may only receive hooks with a maximum depth of 150mm.

	Model	Reference
1	12 sockets support	W010080141
2	12 open-end spanners support	W010080142
3	6 screwdrivers support	W010080143
4	20 hex keys support	W010080144
5	Double rod hook L160	W010080145
	Double rod hook L200	W010080146
	Double rod hook L100	W010080147
6	Double hook closed L100	W010080148
	Double hook closed L200	W010080149
	Double hook closed L160	W010080150
7	Loop ring hook diameter 55	W010080151
8	Single rod hook L100	W010080152
	Single rod hook L160	W010080153
	Single rod hook L200	W010080154
9	Double coat hook L50	W010080155
	Set of 15 mixed accessories	W010080156
	Set of 15 accessories for AFE	W010080245

WORKBENCH EQUIPMENT

Storage equipment



Reclining and depth adjustable shelves mounted between the two uprights of the superstructures

Frame Colour: Light Grey RAL 7035
Colour Code: GC

Made of folded sheet steel, thickness 12/10th. Fastened between the superstructure uprights. The shelves are reversible in order to have the H25mm edge at the front or back. Inclination up to 30°. Max. load: 50kg. Epoxy powder paint finish, oven polymerised at 180°C.

W.	D.	Reference	Colour Code
865	350	W010080127	GC
1300		W010080128	GC
865	450	W010080130	GC
1300		W010080131	GC



Grab containers support rail

Frame Colour: Light Grey RAL 7035
Colour Code: GC

Made of folded sheet steel, thickness 20/10th. The grab container rails are fastened between the superstructure uprights. The true useful length of the rails should be increased by 30mm in relation to the dimensions indicated. 2 possible positions for the grab containers rails: vertical or inclined 15° forward. Max. load: 50kg. Epoxy powder paint finish, oven polymerised at 180°C.

W.	Reference	Colour Code
635	W01 008 0161	GC
865	W01 008 0162	GC
1300	W01 008 0163	GC



Mini-rail for hooking grab containers on the perforated backboard

Frame Colour: Light Grey RAL 7035
Colour Code: GC

The mini-rail is fastened in the H10xL10mm perforations of the perforated panels.

W.	Reference	Colour Code
145	W01 008 0160	GC

WORKBENCH EQUIPMENT

Storage equipment



Shelf, depth 220mm

Frame Colour: Light Grey RAL 7035
 Colour Code: GC

Made of folded sheet steel, thickness 20/10th. The shelves may be fastened by clipping into the grab container rails, or screwed into the superstructure uprights and perforated panels. The front edge has a height of 21mm. The shelf depth is 220mm. Max. load: 10kg. Epoxy powder paint finish, oven polymerised at 180°C.

W.	Reference	Colour Code
340	W010080334	GC
510	W010080335	GC



Multi-purpose tray, width 330mm, depth 240mm

Frame Colour: Light Grey RAL 7035
 Colour Code: GC

Made of folded sheet steel, thickness 20/10th. The multi-function shelves may be fastened by clipping into the grab container rails, or screwed into the superstructure uprights and perforated panels. The notches enable attachment of a barcode scanner or adhesive tape dispenser. The front edge has a height of 21mm. The dimensions are W330xD220mm. Max. load: 10kg. Epoxy powder paint finish, oven polymerised at 180°C.

Reference	Colour Code
W010080302	GC

WORKBENCH EQUIPMENT

Storage equipment

NEW



25L bin with support

Frame Colour: Light Grey RAL 7035
 Colour Code: GC

Overall dimensions W340xD258xH344mm. The rubbish bin may be positioned longitudinally or transversally. It is mounted on the workbench ladders under the worktop. Possibility of installing several rubbish bins side by side on the workstation in order to carry out waste sorting.

Reference	Colour Code
W010080349	GC

Euro Containers



Grey polypropylene containers with European dimensions. Resistant to oils, greases and temperature variations. Full sides.

Depth	Total width	Total height	Capacity in liters	Reference
400	600	200	38	W010080228
300	400	200	17	W010080229
400	600	300	58	W010080230

Grab containers



Plastic grab containers, stackable. Resistant to oils, greases and temperature variations. With label area (labels not included) and gripping handle; The bins may be fastened by clipping into the grab container rails.

Model	W.	H.	D.	Reference
Set of 48 1L red grab containers	105	75	160	W010080216
Set of 88 3.5L red grab containers	144	120	235	W010080217
Set of 24 10L red grab containers	205	163	345	W010080218
Set of 48 1L blue grab containers	105	75	160	W010080219
Set of 38 3.5L blue grab containers	144	120	235	W010080220
Set of 24 10L blue grab containers	205	163	345	W010080221
Set of 48 1L yellow grab containers	105	75	160	W010080222
Set of 38 3.5L yellow grab containers	144	120	235	W010080223
Set of 24 10L yellow grab containers	205	163	345	W010080224
Set of 48 1L recycled black grab containers	105	75	160	W010080225
Set of 38 3.5L recycled black grab containers	144	120	235	W010080226
Set of 24 10L recycled black grab containers	205	163	345	W010080227

WORKBENCH EQUIPMENT

Packaging equipment

NEW



Shelf with dividers

Frame Colour: Light Grey RAL 7035
Colour Code: GC

Shelves are depth adjustable on each side of the uprights with a total stroke of 210mm. Dividers H350mm D500mm.

The dividers are fastened with screws and nuts onto the shelf in steps of 120 or 125mm depending on the shelf width.

W.	Number of dividers	Reference	Colour Code
1300	6	W010080344	GC



Manual paper cutter

Frame Colour: Smooth Black 9005
Colour Code: NL

Cutter guide channel for precise cutting. Return spring to hold the film.

Open-position blocking system. Fastened on or under the worktop or between the uprights.

W.	Reference	Colour Code
1300	W010080340	NL



Reel bar

Frame Colour: Light Grey RAL 7035
Colour Code: GC

For rolls of blister wrap, kraft paper or corrugated cardboard.

Diameter 25mm. Fastened to the top uprights

W.	Reference	Colour Code
865	W010080303	GC
1300	W010080304	GC
1760	W010080305	GC



Dispenser reel bar under workstation

Frame Colour: Light Grey RAL 7035
Colour Code: GC

For rolls of paper blister wrap, kraft paper or corrugated cardboard. Max. reel diameter 500 mm.

W.	Reference	Colour Code
1310 (min. W.1500 worktop)	W010080331	GC

WORKBENCH EQUIPMENT

Packaging equipment



Shelf, depth 220mm

Frame Colour: Light Grey RAL 7035
 Colour Code: GC

Made of folded sheet steel, thickness 20/10th. The shelves may be fastened by clipping into the grab container rails, or screwed into the superstructure uprights and perforated panels. The front edge has a height of 21mm. The shelf depth is 220mm. Max. load: 10kg. Epoxy powder paint finish, oven polymerised at 180°C.

W.	Reference	Colour Code	
340	W010080334	GC	
510	W010080335	GC	



Multi-purpose tray, width 330mm, depth 240mm

Frame Colour: Light Grey RAL 7035
 Colour Code: GC

Made of folded sheet steel, thickness 20/10th. The multi-function shelves may be fastened by clipping into the grab container rails, or screwed into the superstructure uprights and perforated panels. The notches enable attachment of a barcode scanner or adhesive tape dispenser. The front edge has a height of 21mm. The dimensions are W330xD220mm. Max. load: 10kg. Epoxy powder paint finish, oven polymerised at 180°C.

Reference	Colour Code	
W010080302	GC	



25L bin with support

Frame Colour: Light Grey RAL 7035
 Colour Code: GC

Overall dimensions W340xD258xH344mm. The rubbish bin may be positioned longitudinally or transversally.

It is mounted on the workbench ladders under the worktop. Possibility of installing several rubbish bins side by side on the workstation in order to carry out waste sorting.

Reference	Colour Code	
W010080349	GC	



Double labels dispenser, width 150mm

Frame Colour: Light Grey RAL 7035
 Colour Code: GC

Width 150mm on each side. Diameter 25mm. Fastened to an upright, a grab container rail or perforated backboard.

Reference	Colour Code	
W010080301	GC	



WORKBENCH EQUIPMENT

Electrical equipment



Workbench LED lighting

Frame Colour: ■ Industrial Blue RAL 5015 ■ Anthracite Grey RAL 7016 ■ Light Grey RAL 7035
 Colour Code: BI GA GC

Fastened between the uprights of the superstructure using supports made of steel pipe, cross-section 50x30mm. The lighting element is fastened, depending on its size, either directly onto the support arms, or via a mounting plate (colour Light Grey RAL 7035 only). The supports arms are linked by a guide rail of the sliding trolleys (not provided). LED lighting is adapted to precision workstations. They are foreseen with an On/Off switch. Light intensity: 1000 lux at 1 metre/W. Colour rendering index: CRI>80. Colour temperature: 6500 K. Operating life: >60,300 hours. Dimensions: D251xH50xW920 or 1355mm. Epoxy powder paint finish, oven polymerised at 180°C.

Model	Reference	Colour Code
LUM LED W.920 not dimmable + supports for uprights W. 865	W010080274	BI or GA or GC
LUM LED W. 920 dimmable + supports for uprights W. 865	W010080275	BI or GA or GC
LUM LED W. 1300 non dimmable + supports for uprights W. 1300	W010080278	BI or GA or GC



15W LED lighting strip with switch

Frame Colour: ■ Industrial Blue RAL 5015 ■ Anthracite Grey RAL 7016 ■ Light Grey RAL 7035
 Colour Code: BI GA GC

Screw-fastened under the lighting panel or under the shelf with flat box dividers. Light temperature 300K or 400K selectable with a switch. Light intensity 1500 lumen. Cable with plug, length 2m. Direct connection to the 230 volts.

Model	W.	Reference	Colour Code
LED strip + supports for uprights	920	W010080286	BI or GA or GC
	1355	W010080287	BI or GA or GC
LED strip only	810	W010080270	

WORKBENCH EQUIPMENT

Electrical equipment



Additional tubular LED light

Magnetic fastening under the shelf or on an upright. Luminosity, power and homogeneity. Connected directly to the 230 Volts supply via a 2m long cable. Watertight. Guaranteed 50,000 hours. Light temperature 5000 K.

Model	W.	Diameter	Reference
PMMA tube	520	20	W010080178
Polycarbonate tube	670	40	W010080177



Reclined power point rail with circuit-breaker

Strip equipped with 6 sockets 2P+E/220V/16A with 1 differential trip switch 30mA. Bare cable outlet, length 2m. Body made of aluminium profile with fastening brackets at the rear. Operation light indicator.

Model	W.	Reference
6 PC+E	632	W010080246
	862	W010080247
	1292	W010080248

WORKBENCH EQUIPMENT

Computer equipment

NEW



Monitor support max. 27-inch

Frame Colour: Light Grey RAL 7035 Smooth Black 9005
 Colour Code: GC NL

Made of folded sheet steel, thickness 20/10th. For 27-inch monitor max. Fastening spacer VESA 75/75 or 100/100. Screw-fastened to the uprights of the superstructure. Arm made of steel pipe, cross-section 30x30mm. Lengths: short arm 80mm, long arm double or double: 290mm per arm. Epoxy powder paint finish, oven polymerised at 180°C. The monitor fastening support is available in black only. The arms are only available in Light Grey RAL7035.

W.	Reference	Colour Code
Short arm	W010080312	GC
Long arm	W010080313	GC
Double arm	W010080314	GC
without arms	W010080329	



Monitor support 15 to 17-inch with keyboard stand

Frame colours: Light Grey RAL 7035 Smooth Black 9005
 Colour Code: GC NL

Made of folded sheet steel, thickness 20/10th. For 27-inch monitor max. Fastening spacer VESA 75/75 or 100/100. Screw-fastened to the uprights of the superstructure. Arm made of steel pipe, cross-section 30x30mm. Lengths: short arm 80mm, long arm double or double: 290mm per arm. Keyboard stand dimensions: W550xD250mm. Edge H20mm. Keyboard stand made of steel pipes, cross-section 20x20mm, high-adjustable with a stroke of 60mm in steps of 20mm.

Epoxy powder paint finish, oven polymerised at 180°C. The monitor fastening support is available in black only. The arms and keyboard stand are only available in Light Grey RAL7035.

W.	Reference	Colour Code
Short arm	W010080315	GC
Long arm	W010080316	GC
Double arm	W010080317	GC



ZEBRA printer siding support stand, width 427mm, depth 588mm, height 350mm

Frame Colour: Light Grey RAL 7035
 Colour Code: GC

Support designed to receive a ZEBRA printer. Fastening under the frame. Overall dimensions: W427xD588xH350mm. 100% extractable sliding shelf for easy access to the printer.

Epoxy powder paint finish, oven polymerised at 180°C. Light Grey RAL7035 only.



Reference	Colour Code
W010080300	GC

WORKBENCH EQUIPMENT

Ergonomic equipment

Ergonomic Foot Rest

Frame Colour: Light Grey RAL 7035
 Colour Code: GC



Made of folded sheet steel, thickness 12/10th (20/10th for the inclining version) and steel tubes, cross-section 40x20mm and 25x25mm. Non-slip surface.
 Floor-levelling setting jacks.
 Height adjustable from 70 to 250mm above ground level.
 Version with adjustable inclination from 0° to 20° and depth with a stroke of 85mm.
 Epoxy powder paint finish, oven polymerised at 180°C.

Model	W.	D.	Reference	Colour Code
Fixe	500	320	W010080210	GC
Inclinaison réglable			W010080211	GC



Set of 4 castors

Set of 4 swivel castors, diameter 100mm, 2 of which with brake.
 Max. load: 300kg for a set of 4 castors.

Model	Reference
Pour établi SI	W010080242
Pour établi PTH	W010080243

Set of 4 jacks

Set of 4 height-setting jacks.
 Stroke 30mm.
 Max. load: 500kg for a set of 4 jacks.



Model	Reference
Pour établi SI	W010080239
Pour établi PTH	W010080241

MOBILE TROLLEYS





54

SRI EURO CONTAINER
SUPPORTS

56

SPR331 EURO
CONTAINER TROLLEYS

57

TRANSPORT
TROLLEYS CAR

58

WORKSHOP TROLLEYS



TROLLEYS

SRI Euro container support



SRI support for Euro containers, adjustable support height and angle

Frame Colour: ■ Industrial Blue RAL 5015 ■ Anthracite Grey RAL 7016 ■ Light Grey RAL 7035
 Colour Code: BI GA GC

SRI supports for Euro containers, height adjustable with adjustable inclination top
 Metal top with front edge and anti-slip surface coating.
 Height adjustable from 630 to 910 mm.
 Reclining upper support adjustable in 3 positions: 0°, 15° or 30°.
 4 swivel rollers diameter 100, 2 of which with brake.

W.	D.	H.	Reference	Colour Code
610	410	630-910	W02 002 0011	BI or GA or GC



TROLLEYS

SRI2 Euro container support



SRI2 support for Euro containers, adjustable support height and angle

Frame Colour: ■ Industrial Blue RAL 5015 ■ Anthracite Grey RAL 7016 ■ Light Grey RAL 7035
 Colour Code: BI GA GC

The bottom panel is optional.
 Height adjustable from 630 to 910 mm
 Metal top with front edge folded upwards
 Reclining upper support adjustable in 3 positions: 0°, 15° or 30°
 4 swivel rollers diameter 100, 2 of which with brake.

Model	W.	D.	H.	Reference	Colour Code
SRI2 Euro containers support with reclining shelf	610	410	650-910	W02 002 0005	BI or GA or GC
Lower shelf	610			W02 002 0008	BI or GA or GC

TROLLEYS

SPR 331 Trolleys



SPR 331 trolley with 2 Euro container frames

Frame Colour: ■ Industrial Blue RAL 5015
 Colour Code: BI

Trolleys equipped with a frame to received Euro containers 600x400mm.
 The frames are height adjustable in steps of 50mm and reclining from +23 to -23°.
 Frame: Fixed lower base made of folded sheet steel, depth 450mm and 2 steel tube uprights 60x30mm, perforated in steps of 50 mm.
 4 swivel rollers, 2 of which with brake, diameter 100.
 Optional handle.
 Load 200kg.

Model	W.	H.	Reference	Colour Code
SPR 331 trolley w. 2 frames	695	1240	W020050020	BI

Model	W.	D.	Reference
Tray for Euro container frame	635	450	W02 005 0017

Model	Reference
Operating handle	W02 005 0074



TROLLEYS

Transport trolleys CAR



Trolley - 4 uprights

Frame Colour: ■ Industrial Blue RAL 5015 BI ■ Anthracite Grey RAL 7016 GA ■ Light Grey RAL 7035 GC

Frame composed of 4 steel tube uprights, cross-section 30x30mm.
 Tops made of sheet steel.
 Epoxy paint finish, oven polymerised at 180°C.
 Assembly with screws in inserts.
 4 swivel rollers, diameter 100, 2 of which with brakes.
 Load capacity: 150 kg.
 Optional handle.

W.	D.	H.	Number of levels	Reference	Colour Code
700	815	910	2	W020060011	BIGC or GAGC or GCGC
	1215			W020060012	BIGC or GAGC or GCGC
	815		3	W020060013	BIGC or GAGC or GCGC
	1215			W020060014	BIGC or GAGC or GCGC
	815	1275	4	W020060015	BIGC or GAGC or GCGC
	1215			W020060016	BIGC or GAGC or GCGC
	815	1675	5	W020060017	BIGC or GAGC or GCGC
	1215			W020060018	BIGC or GAGC or GCGC

Model	Reference
Operating handle	W02.006.0007

TROLLEYS

Workshop trolleys SV



SV trolley with 2 side panels

Frame Colour: ■ Industrial Blue RAL 5015 ■ Anthracite Grey RAL 7016 ■ Light Grey RAL 7035
 Colour Code: BI GA GC

2 folded sheet steel uprights 20/10th.
 Sheet metal frame with 1 lower metal base and a folded sheet steel worktop, thickness 20/10th.
 Epoxy paint finish, oven polymerised at 180°C. Assembly with screws in inserts.
 4 swivel rollers, diameter 100, 2 of which with brake. 2 or 3 shelf levels.
 Load capacity: 150 kg. Optional handle.

Model	W.	D.	H.	Reference	Colour Code
2 levels	540	670	810	W020070020	BI or GA or GC
3 levels				W020070021	BI or GA or GC

Model	Reference
Operating handle	W02 007 0019



SV trolley with 2 side panels and drawer units or door

Frame Colour: ■ Industrial Blue RAL 5015 ■ Anthracite Grey RAL 7016 ■ Light Grey RAL 7035
 Colour Code: BI GA GC

Frame: characteristics identical to the trolley only.
 The drawer units are made of folded sheet steel, thickness 10/10th and spot-weld assembled. Integrated pull grip.
 The drawers are mounted on total-extraction, telescopic ball sliders. Selective opening of drawers. Drawers are locked with a central locking system. Front height: 150mm.
 Useful dimensions of the drawers: D560xW530xH130mm (sides and rear H60mm).
 Max. load per drawer: 50kg.

Model	W.	D.	H.	Reference	Colour Code
1 drawer unit	540	670	810	W020070022	BI or GA or GC
2 drawer unit				W020070023	BI or GA or GC
3 drawer unit				W020070024	BI or GA or GC

Model	Reference
Operating handle	W02 007 0019

TROLLEYS



EXAMPLE OF COMPOSITION

A wide range of trolleys enabling optimisation of production and logistic flow facilitating organisation and favouring user friendliness.

SRI support for Euro container
W02 002 0011
P. 54

SPR 331
Trolleys
W02 005 0020
P. 56

Transport trolley
CAR
W02 006 0018
P. 57



SV workshop
trolley
W02 007 0020
P. 58

SR2 support for Euro
container
W02 002 0005
P. 55

STORAGE



62

ROLLER SHUTTER CABINETS

63/64

CLEAR DOOR CABINETS
/
HINGED DOOR CABINETS

65

EQUIPPED WORKSHOP
CABINETS

70

PERFORATED WORKSHOP
CABINETS

71/72

DESKTOP CABINETS
/
LOCKERS,
LOCKER ACCESSORIES



STORAGE: CUPBOARDS

Roller shutter cabinets



Roller shutter door cabinets

The casing element of the roller shutter door cabinets is made of spot-welded, 10/10th thick, folded sheet steel.

The doors are composed of 2 roller shutters with extruded PVC blades each with a 10/10th folded sheet steel end blade.

The roller shutters slide in ABS rails located at the top and bottom and is recessed in a the space available on the interior of the cabinet side walls. This system enables easy opening and ensures the space in front of the cabinet is totally unimpeded.

The metal end blades on both sides are equipped with ABS recessed handles, a flush-mounted key lock which moves the locking system to latch into the end blade of the opposite door, thus providing a 1-point locking mechanism.

The shelves are made of spot-weld assembled, 10/10th thick, folded sheet steel. They are foreseen with a welded omega-form stiffener which

provides greater rigidity and allow an evenly distributed load of 150kg per shelf. They are height adjustable in step of 25mm and secured with galvanised steel latches.

All metal elements are finished with epoxy powder paint, oven polymerised at 180°C.

The roller shutter door cabinets are available in 2 heights: 1000 mm (2 shelves) and 1950 mm (4 shelves) and a width of 1200 mm. The useful width of the cabinet is 1045mm.

Attention: The short cabinets are not stackable!

Useful dimensions of the shelves:
W 03 006 0005 W1045xD390 | W 03 006 0006 W1045xD590

Compliant with standard NF D65 763

Body, door and shelf colour: Light Grey RAL 7035
Colour Code: GC

Model	W.	P.	H.	Reference	Colour Code
Tall cabinet 4 shelves	1200	450	1950	W 03 006 0001	GC
		665		W 03 006 0002	GC
Short cabinet 2 shelves		450	1000	W 03 006 0003	GC
		665		W 03 006 0004	GC
1 shelf	450		W 03 006 0005	GC	
	665		W 03 006 0006	GC	

STORAGE: CUPBOARDS

Clear door cabinets



Cabinets with clear doors

The casing element of the transparent door cabinets is made of spot-welded, 10/10th thick, folded sheet steel.

The doors are made of spot-weld assembled, 10/10th thick folded sheet steel. They are foreseen with a welded omega-form stiffener which provides greater rigidity and conceals the closing mechanism. They are incorporated in the top and bottom strips of the cabinet casing and are mounted on concealed steel hinge pins which cannot be unhinged in the closed position for greater security. These hinge pins enable door opening to an angle of 240°.

Closing is achieved with a built-in, 2-point handle/lock system. An opening with width 300mm and height 700mm for the short cabinet and 1640mm on the tall cabinet provides an adequate view of the cabinet contents. The opening is closed with a 2mm and 3mm thick clear acrylic glass panel crimped into a reinforcement frame which is riveted inside the door and invisible from the exterior.

The shelves are made of spot-weld assembled, 10/10th thick, folded sheet steel. They are foreseen with a welded omega-form stiffener which

provides greater rigidity and allow a evenly distributed load of 150kg per shelf. They are height adjustable in step of 25mm and secured with galvanised steel latches.

The shelves are perforated every 150mm in order to incorporate vertical dividers with a depth of 500mm.

It is possible to add optional shelves of the colour RAL 7035 GC (Light Grey). The useful dimensions of the shelves are: W996 x D440.

All elements are finished with epoxy powder paint, oven polymerised at 180°C.

The transparent door cabinets are available in 2 heights: 1000mm (2 shelves) and 1950mm (4 shelves); depth 500mm. The entire 1000mm width of the cabinet may be used.

Attention: The short cabinets are not stackable!

Compliant with standard NF D65 763

Body Colour: Light Grey RAL 7035
 Door Colour: Industrial Blue RAL 5015 Light Grey RAL 7035 GCGC
 Colour Code: GCB1 GCGC

Model	W.	P.	H.	Reference	Colour Code
Tall cabinet 4 shelves			1950	W 03 005 0001	GCB1 or GCGC
Short cabinet 2 shelves	1000	500	1000	W 03 005 0002	GCB1 or GCGC
1 shelf				W 03 002 0005	GC

STORAGE: CUPBOARDS

Hinged door cabinets



Hinged door cabinets

The casing element of the hinged door cabinets is made of spot-welded, 10/10th thick folded sheet steel.

The doors are made of spot-weld assembled, 10/10th thick folded sheet steel. They are foreseen with a welded omega-form stiffener which provides greater rigidity and conceals the closing mechanism. They are incorporated between the top and bottom strips of the cabinet casing and are mounted on concealed steel hinge pins which cannot be unhinged in the closed position for greater security. These hinge pins enable door opening to an angle of 240°.

Closing is achieved with a built-in, 2-point handle/lock system.

The shelves are made of spot-weld assembled, 10/10th thick folded sheet steel. They are foreseen with a welded omega-form stiffener which provides greater rigidity and allow a evenly distributed load of 150kg per shelf. They are height adjustable in step of 25mm and secured with galvanised steel latches.

The shelves are perforated every 150mm in order to incorporate vertical dividers with a depth of 500mm.

It is possible to add optional shelves of the colour RAL 7035 GC (Light Grey). The useful dimensions of the shelves are: W996 x D440 or 590mm

All elements are finished with epoxy powder paint, oven polymerised at 180°C.

Hinge door cabinets are available in 2 heights: 1000mm (2 shelves) and 1950mm (4 shelves); 2 depths 500mm and 665mm. The entire 1000mm width of the cabinet may be used. The depth of 665mm offers sufficient useful volume to receive Europe containers 600x400 placed longitudinally.

Attention: The short cabinets are not stackable!

Compliant with standard NF D65 763.

Body colour:
Door colour:
Colour Code:

■ Light Grey RAL 7035
■ Industrial Blue RAL 5015
GCB1

■ Anthracite Grey RAL 7016
GCGA

■ Light Grey RAL 7035
GCGC

Model	W.	P.	H.	Reference	Colour Code
Tall cabinet 4 shelves	1000	500	1950	W 03 002 0001	GCB1 or GCGA or GCGC
		665		W 03 002 0002	GCB1 or GCGA or GCGC
Short cabinet 2 shelves	1000	500	1000	W 03 002 0003	GCB1 or GCGA or GCGC
		665		W 03 002 0004	GCB1 or GCGA or GCGC
1 shelf	1000	500	1000	W 03 002 0005	GC
1 shelf		665		W 03 002 0006	GC



STORAGE: CUPBOARDS

Equipment



Equipment for cabinets with hinged doors or clear doors W1000xD500

The drawer units do not incorporate the shelves.
 Guides and end stops are incorporated into the drawer stacks.
 Useful dimensions of a telescopic drawer: W890 x D420mm
 Equipment is sold in colour Light Grey RAL 7035

Equipment Colour: Light Grey RAL 7035
 Colour Code: GC

Model	W.	P.	H.	Reference	Colour Code	
Telescopic drawer	1000	430	65	W 03 009 0001	GC	1
			100	W 03 009 0002	GC	
			110	W 03 009 0003	GC	
Unit with 2 drawers	445	430	160	W 03 009 0004	GC	2
			210	W 03 009 0005	GC	
			65	W 03 009 0006	GC	
			110	W 03 009 0007	GC	
Unit with 3 drawers	295	430	160	W 03 009 0008	GC	2
			65	W 03 009 0009	GC	
Unit with 6 drawers	145	430	110	W 03 009 0010	GC	3

Model	W.	P.	H.	Reference	Colour Code	
Set of 4 galvanised dividers	145	430	110	W 03 009 0012	-	
			160	W 03 009 0013	-	
			210	W 03 009 0014	-	
			310	W 03 009 0015	-	
1 cabinet shelf load 150kg	1000	500		W 03 002 0005	GC	
Stackable lectern	1000	500	175	W 03 010 9012	GC	

STORAGE : CUPBOARDS

Equipped workshop cabinets



Visuals given as an example of composition

Tall equipped workshop cabinets

Tall cabinets with hinged doors W1000 x D500 x H1950mm.
Depth of drawers: D430 mm

Body colour: Light Grey RAL 7035
 Door colour: Industrial Blue RAL 5015 Anthracite grey RAL 7016 Light Grey RAL 7035
 Colour Code: GCBI GCGA GCGC

Model	Reference	Colour Code	
2 telescopic drawers H65 + 2 telescopic drawers H100	W 03 009 0016	GCBI or GCGA or GCGC	
1 H65 telescopic drawer + 3 H100 telescopic drawers	W 03 009 0017	GCBI or GCGA or GCGC	
2 drawers (W445xH160) + 6 drawers (W295xH160) + 6 drawers (W145xH65)	W 03 009 0018	GCBI or GCGA or GCGC	
2 drawers (W445xH210) + 6 drawers (W445xH160) + 6 drawers (W295xH110)	W 03 009 0019	GCBI or GCGA or GCGC	
2 drawers (W445xH210) + 6 drawers (W295xH160) + 12 drawers (W145xH110) + 6 drawers (W145xH65)	W 03 009 0020	GCBI or GCGA or GCGC	
24 drawers (W145xH110) + 12 drawers (W295xH110) + 4 drawers (W445xH110)	W 03 009 0022	GCBI or GCGA or GCGC	1
18 drawers (W145xH65) + 6 drawers (W295xH65) + 3 drawers (W295xH160) + 2 drawers (W445xH110) + 2 drawers (W445xH160) + 2 drawers (W445xH210)	W 03 009 0024	GCBI or GCGA or GCGC	2
1 drawers (W890xH65) + 3 drawers (W890xH100) + 2 shelves	W 03 009 0025	GCBI or GCGA or GCGC	3
3 drawers (W890xH65) + 2 drawers (W890xH100) + 2 shelves	W 03 009 0026	GCBI or GCGA or GCGC	



STORAGE: CUPBOARDS

Equipped workshop cabinets



Visuals given as an example of composition

Tall fitted workshop cabinets

Tall cabinets with hinged doors W1000 x D500 x H1950mm. Depth of drawers: D430 mm

Body colour: Light Grey RAL 7035
 Door colour : Industrial Blue RAL 5015 Anthracite grey RAL 7016 Light Grey RAL 7035
 Colour Code: GCBI GCGA GCGC

Model	Reference	Colour Code
6 drawers (W145XH65) + 6 drawers (W145XH110) + 2 drawers (W445XH160) + 2 drawers (W445XH210)	W 03 009 0027	GCBI or GCGA or GCGC
2 drawers (W890XH100) + 3 drawers (W295XH160)	W 03 009 0028	GCBI or GCGA or GCGC
6 drawers (W145XH110) + 3 drawers (W295XH110) + 1 drawer (W890XH65) + 4 drawers (W890XH100)	W 03 009 0029	GCBI or GCGA or GCGC
6 drawers (W145XH65) + 6 drawers (W295XH160) + 1 drawer (W890XH65) + 4 drawers (W890XH100)	W 03 009 0030	GCBI or GCGA or GCGC



STORAGE: CUPBOARDS

Equipped workshop cabinets



Visuals given as an example of composition

Tall fitted workshop cabinets

High cabinets with hinged doors of W1000 x D500 x H1950 mm.
Depth of drawers: D430 mm

Body Colour: Light Grey RAL 7035
 Door Colour: Industrial Blue RAL 5015 Anthracite grey RAL 7016 Light Grey RAL 7035
 Colour Code: GCBI GCGA GCGC

Model	Reference	Colour Code	
2drawers (W445XH210) + 5 shelves	W 03 009 0032	GCBI or GCGA or GCGC	1
6 drawers (W145XH65) + 3 drawers (W295XH110) + 6 drawers (W295XH160) + 2 drawers (W445XH210) + 8 shelves	W 03 009 0033	GCBI or GCGA or GCGC	
6 drawers (W145XH110) + 3 drawers (W295XH110) + 3 drawers (W295XH160) + 8 shelves	W 03 009 0034	GCBI ou GCGAou GCGC	3
1 drawer (W890XH100) + 2 drawers (W445XH160) + 6 shelves	W 03 009 0035	GCBI or GCGA or GCGC	2



STORAGE: CUPBOARDS

Equipped workshop cabinets

1



2



3

Short fitted workshop cabinets

Short cabinets with hinged doors W1000 x D500 x H1000mm. The short cabinets H1000 are not stackable. Depth of drawers: D430.

Body Colour: Light Grey RAL 7035
 Door Colour: Industrial Blue RAL 5015 Anthracite grey RAL 7016 Light Grey RAL 7035
 Colour Code: GCBI GCGA GCGC
 Drawer and shelf Colour: Light Grey RAL 7035

Model	Reference	Colour Code	
1 drawer (W890XH100) + 2 shelves	W 03 009 0031	GCBI or GCGA or GCGC	1
3 shelves and no drawer	W 03 009 0036	GCBI or GCGA or GCGC	2
1 drawer (W890xH100) + 1 drawer (W890XH65) + 2 shelves	W 03 009 0037	GCBI or GCGA or GCGC	3

STORAGE: CUPBORADS

Perforated workshop cabinets



Visuals given as an example of composition

Perforated workshop cabinets

Tall cabinets with perforated doors and rear wall W1000 x D500 x H1950 MDF shelf: W995xD440 and thickness 16mm Dimensions of drawers: W890 x D430 x H100mm The cabinet enclosure is Light Grey and the doors are available in Industrial Blue

Body Colour:
Door Colour:
Colour Code:

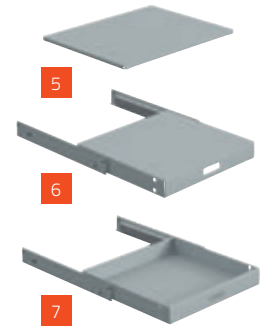
Light Grey RAL 7035
Industrial Blue RAL 5015
GCBI

Model	Reference	Colour Code
2 drawers + 2 shelves	W 03 008 0001	GCBI
2 drawers + 1 wooden shelf + 2 shelves	W 03 008 0002	GCBI
3 drawers + 1 wooden shelf + 1 shelf	W 03 008 0003	GCBI
3 drawers + 2 shelves	W 03 008 0004	GCBI
4 drawers + 2 shelves	W 03 008 0005	GCBI
4 drawers + 1 wooden shelf + 2 shelves	W 03 008 0006	GCBI



STORAGE: CUPBOARDS

Desktop cabinets



MODULINFO cabinet

Cabinet Colour: ■ Industrial Blue RAL 5015 ■ Anthracite grey RAL 7016 ■ Light Grey RAL 7035
 Colour Code: BI GA GC

Construction in 10/10th folded sheet steel.
 Door reinforced with left-right reversible reinforcement omega of your choice. Key lock. Doorway L542xH800mm. Shelf in 10/10th folded sheet steel. W675xD562xH20mm. Fixing on steel cleats and adjustable in height in 50mm increments. 100% extractable keyboard drawer mounted on ball-bearing slides. Useful dimensions W607x D300xH37mm. Optional 100% extractable drawer mounted on ball bearing slides.

Useful dimensions W510x D560xH73mm. Adjustable in 50mm increments. Optional 100% extractable tray mounted on ball bearing slides. Dimensions W510x D560xH73mm. Adjustable in 50mm increments. Perforations for side ventilation 10x10mm section at 38mm intervals. Passage of cables diameter 70 mm at the back. Electrical strip 5PC 2P+E + integrated switch

Model	W.	P.	H.	Reference	Colour Code	
Fixed cabinet	695	660	1005	W04 001 0025	BIGC or GAGC or GCGC	1
Cabinet on wheels			1140	W04 001 0026	BIGC or GAGC or GCGC	4
Cabinet with 2 pick-up bin support rails			1005	W04 001 0033	BIGC or GAGC or GCGC	
Cabinet on casters with 2 pick-up bin support rails			1140	W04 001 0034	BIGC or GAGC or GCGC	2
Cabinet with perforated panel			1005	W04 001 0035	BIGC or GAGC or GCGC	3
Cabinet on wheels with pegboard			1140	W04 001 0036	BIGC or GAGC or GCGC	
Tablet	675	562		W04 001 0038	GC	5
Pull-out tray	510	560		W04 001 0039	GC	6
Drawer			75	W04 001 0040	GC	7



Desktop

Body Colour: ■ Light Grey RAL 7035 ■ Industrial Blue RAL 5015
 Colour Code: GC BI

Single-piece, 10/10th folded sheet steel casing. Spot welded bottom, top and base. Hinge doors reinforced with omega-form stiffeners. Built-in, 2-point key lock. Shelves height adjustable in steps of 50 mm with a 10/10th folded sheet steel latches. Load per shelf: 150 kg. Drawer height 150mm mounted on telescopic ball-race slider. Stackable desk element reclining to 20°. Compliant with standard NF D65 763

Model	W.	P.	H.	Reference	Colour Code	
Single cabinet 2 shelves	500	500	945	W 03 010 0001	GCBI	
Single cabinet 1 drawer + 2 shelves				W 03 010 0002	GCBI	
Single cabinet 2 drawers			500	W 03 010 0003	GCBI	
Desk cupboard 2 shelves			1120	W 03 010 0004	GCBI	1
Desk cupboard 1 drawer + 2 shelves			W 03 010 0005	GCBI	2	
Desk cupboard 2 drawers			W 03 010 0006	GCBI		
Tackable lectern			175	W 03 010 0007	GC	3
Shelf	500	500	35	W03 010 0008	GC	55
Drawer with telescopic rail	500	500	150	W03 010 9005	GC	60

Clean industry changing room lockers



The casing and shelves are made of spot-weld assembled, 8/10th thick folded sheet steel. The doors are made of spot-weld assembled, 10/10th thick folded sheet steel. They are equipped with a welded, omega-form stiffener providing greater rigidity and ventilation openings in the top and bottom to ensure adequate air flow.

They are incorporated between the top and bottom strips of the cabinet casing and are mounted on concealed steel hinge pins which cannot be unhinged in the closed position for greater security. These hinge pins enable door opening to an angle of 120°.

An embossed label holder is located in the top section and locking is provided by a 3-point padlock hasp (padlock not provided).

All elements are finished with epoxy powder paint, oven polymerised at 180°C.

Clean Industry Lockers: Width per compartment: 300mm.

Useful width: 295mm. Useful depth: 485mm.

Total useful height: 1760mm.

Useful height above the construction site helmet holder shelf: 325mm. Interior fittings: Helmet-holder shelf, clothes hanger rail, 2 lateral coat hooks.

Compliant with standard NF D65 760

Body Colour:  Light Grey RAL 7035
 Door Colour:  Industrial Blue RAL 5015
 Colour Code: GCB1

Model	W.	P.	H.	Reference	Colour Code
2 compartments	600	500	1800	W 03 013 0002	GCB1
3 compartments	900			W 03 013 0003	GCB1
4 compartments	1200			W 03 013 0004	GCB1



Dirty industry changing room lockers

Width per compartment: 400mm.

Useful width: 395mm. Useful depth: 485mm.

Total useful height: 1760mm. Useful height above the motorcycle helmet holder shelf: 325mm.

Interior fittings: Helmet holder shelf, clothes hanger rail, central vertical divider under the helmet shelf. All elements are finished with epoxy powder paint, oven polymerised at 180°C.

Compliant with standard NF D65 760

Body Colour:  Light Grey RAL 7035
 Door Colour:  Industrial Blue RAL 5015
 Colour Code: GCB1

Model	W.	P.	H.	Reference	Colour Code
2 compartments	800	500	1800	W 03 014 0002	GCB1
3 compartments	1200			W 03 014 0003	GCB1

STORAGE

Lockers accessories



1



2



3



4

Accessories for changing room lockers

Locker accessories may be incorporated into the industrial lockers in accordance with specific site requirements. An inclined top surface of the locker to avoid the placing of objects.

Body Colour: Light Grey RAL 7035
Colour Code: GC

Model	W.	Reference	Colour Code	
Set of 4 feet H150 for locker 2 to 4 compartments	-	W 03 016 0002	GC	1
	600	W 03 016 0005	GC	
	800	W 03 016 0006	GC	
	900	W 03 016 0007	GC	
Adjustable jack feet base	1200	W 03 016 0008	GC	2
	600	W 03 016 0010	GC	
	800	W 03 016 0011	GC	
	900	W 03 016 0012	GC	
H340 bench base for lockers	1200	W 03 016 0013	GC	3
	600	W 03 016 0016	GC	
	800	W 03 016 0017	GC	
Inclined top for lockers	900	W 03 016 0018	GC	4
	1200	W 03 016 0019	GC	

COMPUTER FURNITURE





76

MODULINFO IT CABINETS

78

AIC500 IT CABINETS

79

PC WORKSTATION



COMPUTER FURNITURE

MODULINFO IT Cabinets



MODULINFO computer cabinet

Frame Colour: ■ Industrial Blue RAL 5015 ■ Anthracite Grey RAL 7016 ■ Light Grey RAL 7035
 Colour Code: ■ BI ■ GA ■ GC

Made of folded sheet steel, thickness 10/10th. Doors reinforced with omega stiffeners, reversible left-right as required. Key locking. Door passage W542xH800mm. Shelf made of folded sheet steel, thickness 10/10th. W675xD562xH20mm. Fastened with steel latches and height adjustable in steps of 50mm. 100% extractable keyboard drawer mounted on ball-race sliders. Useful dimensions W607xD300xH37mm. 100% extractable optional drawer mounted on ball-race sliders. Useful dimensions W510xD560xH73mm. Adjustable in steps of 50mm. 100% extractable optional worktop mounted on ball-race sliders. Dimensions W510xD560xH73mm. Adjustable in steps of 50mm. Side air-vent perforations, size 10x10mm in steps of 38mm. Cables passage, diameter 70mm at the rear and diameter 48 mm in the top. Electric strip with 5 sockets 2P+E + incorporated switch.

Model	W.	D.	H.	Reference	Colour Code	
Fixed cabinet	695	660	1005	W04 001 0025	BIGC or GAGC or GCGC	1
Cabinet on wheels			1140	W04 001 0026	BIGC or GAGC or GCGC	2
Cabinet with tilting screen box			1005	W04 001 0027	BIGC or GAGC or GCGC	3
Cabinet with tilting screen box on wheels			1140	W04 001 0028	BIGC or GAGC or GCGC	
Cabinet with screen box and pull-out tray			1005	W04 001 0029	BIGC or GAGC or GCGC	
Cabinet with screen box and pull-out tray on wheels			1140	W04 001 0030	BIGC or GAGC or GCGC	
Cabinet with rail and monitor support			1005	W04 001 0031	BIGC or GAGC or GCGC	4
Cabinet with rail and screen support on wheels			1140	W04 001 0032	BIGC or GAGC or GCGC	5
Set of 2 uprights					650	W04 001 0037
Shelf	675	562		W04 001 0038	GC	7
Pull-out tray	510	560		W04 001 0039	GC	8
Drawer			75	W04 001 0040	GC	9



COMPUTER FURNITURE

MODULINFO IT Cabinets



COMPUTER FURNITURE

AIC500 IT CABINETS



Computer cabinets AIC500

Frame Colour: ■ Industrial Blue RAL 5015 ■ Anthracite Grey RAL 7016 ■ Light Grey RAL 7035
 Colour Code: BI GA GC

Made of 10/10 thick welded sheet steel, our cabinets are very robust.
 1 transparent door compartment for the screen dimensions: W595xD540xH740
 1 large storage compartment with solid reinforced door that locks with key dimensions: W595xD540xH795
 Full-extension sliding keyboard and mouse support drawer.
 Supplied with 1 block of 5 sockets + 9 Watt fan.
 Screen: up to 24 inches.
 Compliant with standard NF D65 763

Model	W.	D.	H.	Reference	Colour Code
Fixed	650	550	1750	W04 001 0001	BI or GA or GC
On wheels			1890	W04 001 0002	BI or GA or GC



COMPUTER FURNITURE

PC Workstation



PC PC Workstation

Frame Colour: ■ Industrial Blue RAL 5015 ■ Anthracite Grey RAL 7016 ■ Light Grey RAL 7035
 Colour Code: BI GA GC

Computer support made of painted sheet steel.
 Welded steel tube 60x60 frame, thickness 20/10th.
 Epoxy powder paint finish, oven polymerised at 180°C.
 Anti-reflection, Plexiglas monitor support suitable for 22-inch fixed monitors.
 Fixed version on pads or mobile version on 4 castors, 2 of which with brake, diameter 100mm.
 Supplied in kit form.
 Optional: Keyboard drawer mounted on telescopic ball-race sliders.
 Optional: possibility of up to 3 shelves to be installed at 3 heights.
 Max. load per shelf: 25kg

Model	D.	H.	Width	Reference	Colour Code	
Computer PC workstation on skates	600	1690	700	W04 001 0009	BI or GA or GC	1
Computer workstation on wheels		1760	700	W04 001 0011	BI or GA or GC	
Keyboard and mouse drawer for computer workstation	580	75	350	W04 001 0013	BI or GA or GC	2
Shelf	400		700	W04 001 0014	BI or GA or GC	3

SEATING



82/83

ERGOLINE
/
AIRPLUS SEATS

84/85

ERGOSOFT
/
ERGOSLIM SEATS

86/87

ERGODYN
/
NATUR SEATS

88

STOOLS

89/90

SIT-STAND STOOLS
/
SEATING ACCESSORIES





ERGOLINE seats

The ERGOLINE chair offers an ergonomic seat providing a high level of comfort and optimum user-friendliness. Its synchronous mechanism provides an infinite range of position settings in order to adapt to the user's morphology, working position and associated movements. The recessed backrest offers total freedom of movement with the possibility of body rotation to the rear without hindering the arms.

Polyurethane seat, width 460mm, depth 431mm.

Polyurethane backrest, height 502mm and width 460mm.

The backrest height is adjusted with a notch rail with a travel stroke of 74mm. Anti-return facility to avoid any risk of back shock to the user.

Seat and backrest movement tension adjustment. The seat and backrest may be blocked in 4 pre-defined positions.

Synchronous dynamic seat mechanism for coordinated movement of seat and backrest.

Seat rotation of 360°C.

5-branch base made of cast aluminium coated with black epoxy paint, diameter: 610mm for low models and base diameter 670 mm for high models.

Height adjustment with a gas lift column operated using a lever under the seat. The gas lift column enables height adjustment of the seat/backrest assembly with a travel stroke of 140mm, 200mm or 265mm.

An adjustable height footrest is proposed for the high version.

The castors are of the hard floor type, diameter 50mm.

35mm high pads.

Compliant with standard NF D65 761

Model	Base diameter	Seat height (cm)	Version	Reference
Aluminium base	670	60-86	Glides + footrest	W 05 009 0001
			Skates	W 05 009 0002
			Casters	W 05 009 0003
	610	53-63	Skates	W 05 009 0004
			Casters	W 05 009 0005
			Skates	W 05 009 0006
		46-60		

NEW



AIRPLUS seats

The AIRPLUS chair provides large seating dimensions and perforations for airflow through the seating zone and for the user's comfort throughout the day.

Soft polyurethane seat with breather perforations, width 480mm, depth 450mm. Optional mechanism for seat depth adjustment.

Soft polyurethane backrest with breather perforations, width 410mm, height 390mm.

The backrest height is adjusted with a lever with a travel stroke of 120mm.

Asynchronous dynamic seating mechanism enabling coordinated and independent adjustment of seat and backrest inclination angles. Seat rotation of 360°C.

5-branch base made of cast aluminium coated with black epoxy paint, diameter: 610mm for low seats and 668mm for high chairs or

5-branch nylon reinforced polyamid base, diameter: 600mm for low and medium height seats and 680mm for high seats.

Height adjustment with a gas lift column operated using a lever under the seat. The gas lift column enables height adjustment of the seat/backrest assembly with a travel stroke of 140mm, 200mm or 265mm.

A height-adjustable footrest is proposed on the high version with a column stroke of 265mm.

The castors are of the hard floor type, diameter 50mm.

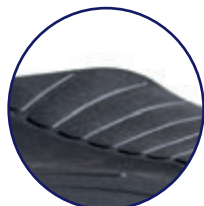
35mm high pads.

Compliant with standard NF D65 761

Setting seat depth	Model	Base diameter	Seat height (cm)	Version	Reference
With	Aluminium base	670	59-85	Glides + footrest	W 05 003 0013
				Skates	W 05 003 0014
				Casters	W 05 003 0015
		610	52-72	Skates	W 05 003 0016
				Casters	W 05 003 0017
				Skates	W 05 003 0018
	Polyamide base	680	59-85	Glides + footrest	W 05 003 0019
				Skates	W 05 003 0020
				Casters	W 05 003 0021
		600	52-72	Skates	W 05 003 0022
				Casters	W 05 003 0023
				Skates	W 05003 0024
Without	Aluminium base	670	59-85	Glides + footrest	W 05 003 0004
				Skates	W 05 003 0003
				Casters	W 05 003 0006
		610	52-72	Skates	W 05 003 0002
				Casters	W 05 003 0005
				Skates	W 05 003 0001
	Polyamide base	680	59-85	Glides + footrest	W 05 003 0007
				Skates	W 05 003 0008
				Casters	W 05 003 0009
		600	52-72	Skates	W 05 003 0010
				Casters	W 05 003 0011
				Skates	W 05 003 0012

SEATS

ERGOSOFT 2010



ERGOSOFT 2010 seats

Behind the reduced thickness of the ERGOSOFT seating and backrest elements one discovers an exceptional seating comfort. Grooves avoid the user slipping during movement while also providing airflow for the seat and the user.

Soft ribbed polyurethane seat, width 440mm, depth 420mm.

Optional mechanism for seat depth adjustment.

Polyurethane backrest, width 380mm, height 300mm.

The backrest height is adjusted with a lever with a travel stroke of 120mm.

Asynchronous dynamic seating mechanism enabling coordinated and independent adjustment of seat and backrest inclination angles.

Seat rotation of 360°.

5-branch base made of cast aluminium coated with black epoxy paint, diameter: 610mm for low seats and 670mm for high chairs or 5-branch nylon reinforced polyamide base, diameter: 600mm for low and medium height seats and 680mm for high seats.

Height adjustment with a gas lift column operated using a lever under the seat. The gas lift column enables height adjustment of the seat/backrest assembly with a travel stroke of 140mm, 200mm or 265mm.

A height-adjustable footrest is proposed on the high version with a column stroke of 265mm.

The castors are of the hard floor type, diameter 50mm.

35mm high pads.

Compliant with standard NF D65 761

Setting seat depth	Model	Base diameter	Seat height (cm)	Version	Reference
With	Aluminium base	670	56-82	Glides + footrest	W 05 004 0019
				Skates	W 05 004 0020
				Casters	W 05 004 0021
		610	42-56	Skates	W 05 004 0022
				Casters	W 05 004 0023
				Skates	W 05 004 0024
	Polyamide base	680	56-82	Glides + footrest	W 05 004 0025
				Skates	W 05 004 0026
				Casters	W 05 004 0027
		600	42-56	Skates	W 05 004 0028
				Casters	W 05 004 0029
				Skates	W 05 004 0030
Without	Aluminium base	670	56-82	Glides + footrest	W 05 004 0007
				Skates	W 05 004 0005
				Casters	W 05 004 0011
		610	42-56	Skates	W 05 004 0003
				Casters	W 05 004 0009
				Skates	W 05 004 0001
	Polyamide base	680	56-82	Glides + footrest	W 05 004 0013
				Skates	W 05 004 0014
				Casters	W 05 004 0015
		600	42-56	Skates	W 05 004 0016
				Casters	W 05 004 0017
				Skates	W 05 004 0018

SEATS ERGOSLIM



ERGOSLIM seats

The ERGOSLIM chair provides a touch of modernity in the workspace thanks to its fine and elegant design. This chair is greatly appreciated for the comfort offered by the grainy and extremely subtle finish of the seating element. The range is completed with the ERGOSLIM sit-stand stool.

Polyurethane seat width and depth 395mm.

Optional mechanism for seat depth adjustment.

Polyurethane backrest, height 295mm and width 375mm.

The backrest height is adjusted with a lever with a travel stroke of 120mm.

Asynchronous dynamic seating mechanism enabling coordinated and independent adjustment of seat and backrest inclination angles. Seat rotation of 360° C.

5-branch base made of cast aluminium coated with black epoxy paint, diameter: 610mm for low seats and 670mm for high chairs or 5-branch nylon reinforced polyamide base, diameter: 600mm for low and medium height seats and 680mm for high seats.

Height adjustment with a gas lift column operated using a lever under the seat. The gas lift column enables height adjustment of the seat/backrest assembly with a travel stroke of 140mm, 200mm or 265mm.

A height-adjustable footrest is proposed on the high version with a column stroke of 265mm.

The castors are of the hard floor type, diameter 50mm.

35mm high pads.

Compliant with standard NF D65 761

Setting seat depth	Model	Base diameter	Seat height (cm)	Version	Reference
With	Aluminium base	670	56-82	Glides + footrest	W 05 010 0017
				Skates	W 05 010 0018
				Casters	W 05 010 0019
		610	49-69	Skates	W 05 010 0020
				Casters	W 05 010 0021
				Skates	W 05 010 0022
	Polyamide base	680	56-82	Glides + footrest	W 05 010 0023
				Skates	W 05 010 0024
				Casters	W 05 010 0025
		600	49-69	Skates	W 05 010 0026
				Casters	W 05 010 0027
				Skates	W 05 010 0028
Without	Aluminium base	670	56-82	Glides + footrest	W 05 010 0001
				Skates	W 05 010 0002
				Casters	W 05 010 0003
		610	49-69	Skates	W 05 010 0004
				Casters	W 05 010 0005
				Skates	W 05 010 0006
	Polyamide base	680	56-82	Glides + footrest	W 05 010 0007
				Skates	W 05 010 0008
				Casters	W 05 010 0009
		600	49-69	Skates	W 05 010 0010
				Casters	W 05 010 0011
				Skates	W 05 010 0012

SEATS

ERGODYN 2008



ERGODYN 2008 seats

ERGODYN is a classic amongst work seats, both from an aesthetic as well as a seating quality point of view making it a reference thanks to its quality price ratio.

Embossed polyurethane seat, width 410mm, depth 380mm Optional mechanism for seat depth adjustment.

Embossed polyurethane backrest, width 380mm and height 250mm with grasping recess.

The backrest height is adjusted with a lever with a travel stroke of 120mm.

Asynchronous dynamic seating mechanism enabling coordinated and independent adjustment of seat and backrest inclination angles.

Seat rotation of 360°.

5-branch base made of cast aluminium coated with black epoxy paint, diameter: 610mm for low seats and 668mm for high seats or 5-branch nylon reinforced polyamide base, diameter: 600mm for low seats and 680mm for high seats.

Height adjustment with a gas lift column operated using a lever under the seat. The gas lift column enables height adjustment of the seat/backrest assembly with a travel stroke of 140mm, 200mm or 265mm.

A height-adjustable footrest is proposed on the high version with a column stroke of 265mm.

The castors are of the hard floor type, diameter 50mm.

35mm high pads.

Compliant with standard NF D65 761

Setting seat depth	Model	Base diameter	Seat height (cm)	Version	Reference
Avec	Aluminium base	670	56-82	Glides + footrest	W 05 005 0031
				Skates	W 05 005 0032
				Casters	W 05 005 0033
		610	49-69	Skates	W 05 005 0034
				Casters	W 05 005 0035
				Skates	W 05 005 0036
	Polyamide base	680	56-82	Glides + footrest	W 05 005 0037
				Skates	W 05 005 0038
				Casters	W 05 005 0039
		600	49-69	Skates	W 05 005 0040
				Casters	W 05 005 0041
				Skates	W 05 005 0042
Sans	Aluminium base	670	56-82	Glides + footrest	W 05 005 0007
				Skates	W 05 005 0005
				Casters	W 05 005 0011
		610	49-69	Skates	W 05 005 0003
				Casters	W 05 005 0009
				Skates	W 05 005 0001
	Polyamide base	680	56-82	Glides + footrest	W 05 005 0013
				Skates	W 05 005 0015
				Casters	W 05 005 0017
		600	49-69	Skates	W 05 005 0019
				Casters	W 05 005 0021
				Skates	W 05 005 0023
			42-56		



NATUR seats

The NATUR seat respects the tradition of using wood in the workplace. Seating comfort is assured by the design form which guarantees the optimum seating position for the user. A particularly pleasant feeling is procured by the contact with wood. Beech wood seat, thickness 8mm, depth 390mm, width 410mm. Optional mechanism for seat depth adjustment.

Backrest height 260 and width 390mm. The backrest height is adjusted with a lever with a travel stroke of 120mm.

Asynchronous dynamic seating mechanism enabling coordinated and independent adjustment of seat and backrest inclination angles.

Seat rotation of 360°C.

5-branch base made of cast aluminium coated with black epoxy paint, diameter: 610mm for low seats and 670mm for high chairs or 5-branch nylon reinforced polyamide base, diameter: 600mm for low and medium height seats and 680mm for high seats.

Height adjustment with a gas lift column operated using a lever under the seat. The gas lift column enables height adjustment of the seat/backrest assembly with a travel stroke of 140mm, 200mm or 265mm.

A height-adjustable footrest is proposed on the high version with a column stroke of 265mm.

The castors are of the hard floor type, diameter 50mm.

35mm high pads.

Compliant with standard NF D65 76 1

Setting seat depth	Model	Base diameter	Seat height (cm)	Version	Reference
With	Aluminium base	670	53-73	Glides + footrest	W 05 005 0043
				Skates	W 05 005 0044
				Casters	W 05 005 0045
		610	46-66	Skates	W 05 005 0046
				Casters	W 05 005 0047
				Skates	W 05 005 0048
	Polyamide base	680	53-73	Glides + footrest	W 05 005 0049
				Skates	W 05 005 0050
				Casters	W 05 005 0051
		600	46-66	Skates	W 05 005 0052
				Casters	W 05 005 0053
				Skates	W 05 005 0054
Without	Aluminium base	670	53-73	Glides + footrest	W 05 005 0008
				Skates	W 05 005 0006
				Casters	W 05 005 0012
		610	46-66	Skates	W 05 005 0004
				Casters	W 05 005 0010
				Skates	W 05 005 0002
	Polyamide base	680	53-73	Glides + footrest	W 05 005 0014
				Skates	W 05 005 0016
				Casters	W 05 005 0018
		600	46-66	Skates	W 05 005 0020
				Casters	W 05 005 0022
				Skates	W 05 005 0024
			39-53		



NEW

ERGOLINE stools

Height adjustment with a gas lift column operated using a lever under the seat with 3 column heights: stroke 140, 200 or 265mm. 5-branch reinforced polyamide base, diameter 600mm for low stools, 680mm for high stools or 5-branch cast aluminium base coated with black epoxy paint, diameter: 610mm for low stools and 670mm for high stools.

Seat rotation of 360°. Height adjustment with a circular knob providing fast and easy access to the control mechanism. Available on castors or pads, with or without footrest (option only available with pads or on high stools).

Model	Base diameter	Seat height (cm)	Version	Reference
Aluminium	610	54-80	Glides + footrest	W 05 011 0001
			Skates	W 05 011 0002
		47-67	Casters	W 05 011 0003
			Skates	W 05 011 0004
		40-54	Casters	W 05 011 0005
			Skates	W 05 011 0006
Polyamide	600	54-80	Glides + footrest	W 05 011 0007
			Skates	W 05 011 0008
		47-67	Casters	W 05 011 0009
			Skates	W 05 011 0010
		40-54	Casters	W 05 011 0011
			Skates	W 05 011 0012

ERGODYN 2000 stools

Round polyurethane seat, diameter 340mm with breather perforations.

Seat rotation of 360°.

Height adjustment with a gas lift column operated using a lever under the seat with 3 column heights: stroke 140, 200 or 265mm. 5-branch reinforced polyamide base, diameter 600mm for low stools, 680mm for high stools or 5-branch cast aluminium base coated with black epoxy paint, diameter: 610mm for low stools and 670mm for high stools.

Compliant with standard NF D65 761 763.



Model	Base diameter	Seat height (cm)	Version	Reference
Aluminium	610	52-78	Glides + footrest	W 05 001 0007
			Skates	W 05 001 0005
		45-65	Casters	W 05 001 0011
			Skates	W 05 001 0003
		38-52	Casters	W 05 001 0009
			Skates	W 05 001 0001
Polyamide	600	52-78	Glides + footrest	W 05 001 0013
			Skates	W 05 001 0015
		45-65	Casters	W 05 001 0017
			Skates	W 05 001 0019
		38-52	Casters	W 05 001 0021
			Skates	W 05 001 0023

NATUR stools

Round wooden seat, diameter 320mm. Seat rotation of 360°.

Height adjustment with a gas lift column operated with a circular lever under the seat, accessible from the entire circumference. 3 column heights: stroke 140, 200 or 265mm.

5-branch reinforced polyamide base, diameter: 600mm for low stools or 680mm for high stools or cast aluminium base painted with black epoxy paint, diameter: 610mm for low stools and 670mm for high stools. Compliant with standard NF D65 761



Model	Base diameter	Seat height (cm)	Version	Reference
Aluminium	610	52-78	Glides + footrest	W 05 001 0008
			Skates	W 05 001 0006
		45-65	Casters	W 05 001 0012
			Skates	W 05 001 0004
		38-52	Casters	W 05 001 0010
			Skates	W 05 001 0002
Polyamide	600	52-78	Glides + footrest	W 05 001 0014
			Skates	W 05 001 0016
		45-65	Casters	W 05 001 0018
			Skates	W 05 001 0020
		38-52	Casters	W 05 001 0022
			Skates	W 05 001 0024



ERGOSLIM sit-stand seats

Polyurethane seat with width 360mm and depth 330mm as well as a 50mm high lower back support with handle grips. Cast aluminium, colour black, diameter 610mm or reinforced nylon polyamide base, diameter 600mm / Seat rotation of 360°C. Height adjustment with a gas lift column operated using a lever under the seat. The seat height adjustment gas lift column has a stroke of 200mm for the FLEX version or 265mm for the straight version. The FLEX column enables a practically permanent back movement while maintaining excellent stability. Only available with pads.

Model	Base diameter	Mechanism	Seat height (cm)	Reference
Aluminium	610	Simple mechanism	58-84	W 05 010 0013
		FLEX column	68-88	W 05 010 0015
Polyamide	600	Simple mechanism	58-84	W 05 010 0014
		Single control / FLEX column	68-88	W 05 010 0016



LM2023 sit-stand seats

Polyurethane seat with width 360 mm and depth 250 mm as well as a 100 mm high lower back support with handle grips. Black, cast aluminium 5-branch base, diameter 610mm or reinforced polyamide 5-branch base, diameter 600mm. Seat rotation of 360° . Height adjustment with a gas lift column operated using a lever under the seat. The seat height adjustment gas lift column has a stroke of 200mm for the FLEX version or 265mm for the straight version. The FLEX column enables a practically permanent back movement while maintaining excellent stability. Only available with pads.

Model	Base diameter	Mechanism	Seat height (cm)	Reference
Aluminium	610	Simple mechanism	59-85	W 05 002 0002
		FLEX column	69-89	W 05 002 0003
Polyamide	600	Simple mechanism	59-85	W 05 002 0014
		FLEX column	69-89	W 05 002 0009

SEATS

SIT-STAND SEATS



AS200 sit-stand seats

Polyurethane seat with width 330 mm and depth 240 mm as well as a 160 mm high lower back support.

Black epoxy paint, cast aluminium 5-branch base, diameter 610mm or reinforced nylon polyamide 5-branch base, diameter 600mm.

Seat rotation of 360°C.

Height adjustment with a gas lift column operated using a lever under the seat. The seat height adjustment gas lift column has a stroke of 200mm for the FLEX version or 265mm for the straight version.

The FLEX column enables a practically permanent back movement while maintaining excellent stability. Only available with pads.

Model	Base diameter	Mechanism	Seat height (cm)	Reference
Aluminium	610	Simple mechanism	59-85	W 05 002 0001
		FLEX column	69-89	W 05 002 0015
Polyamide	600	Simple mechanism	59-85	W 05 002 0008
		FLEX column	69-89	W 05 002 0016

LM2029 sit-stand seats



Saddle seat width 270mm and depth 270mm upholstered with synthetic leather.

Back rest width 320mm and height 120mm mounted on silent-blocks with depth adjustment using a knob to modify the lower back support.

Black epoxy paint, cast aluminium 5-branch base, diameter 610mm or reinforced nylon polyamide 5-branch base, diameter 600mm.

Seat rotation of 360°C.

Height adjustment with a gas lift column operated using a lever under the seat. The gas lift column enables adjustment of the seating height from 57 to 81 cm.

Compliant with standard NF D65 761

Model	Base diameter	Mechanism	Version	Reference
Aluminium	610	With backslash	Castors	W 05 002 0005
			Skates	W 05 002 0007
		Without backslash	Castors	W 05 002 0004
			Skates	W 05 002 0006
Polyamide	600	With backslash	Castors	W 05 002 0010
			Skates	W 05 002 0011
		Without backslash	Castors	W 05 002 0012
			Skates	W 05 002 0013



Circular footrest

Reference
W 05 012 0008



ESD H35mm pads

Set of 5 castors.

Reference
W 05 012 0007



Pads H35mm

Set of 5 castors.

Reference
W 05 012 0005



Pads H35mm

Set of 5 castors.

Reference
W 05 012 0006



Braked castors under load

Set of 5 castors.

Reference
W 05 012 0002



Braked castors under load

Set of 5 castors.

Reference
W 05 012 0004



Braked castors under load

Set of 5 castors.

Reference
W 05 012 0003



Hard floor castors

Set of 5 castors.

Reference
W 05 012 0001



SEATING ERGONOMICS

UNDERSTANDING OF ERGONOMICS

Thanks to the well-imagined ergonomic design, the operators remain efficient and attentive not only throughout the entire working day, but throughout their entire professional career.

Seating is an essential part of workplace ergonomics. Musculoskeletal disorders (MSD) have increased spectacularly and demand that specific attention should be paid to the quality of employee seating. Absenteeism due to MSD costs companies a great deal of money and the return on investment for high quality seating is therefore extremely rapid considering this cost.

The seating must be adapted both to the morphology of the operator, as well as the specificity of the tasks to be carried out.

SEATING RECOMMENDATIONS

1. Height:

The seat must be set just below the knee joints. The feet must be firmly placed flat on the ground in the sitting position.

In the case where the operator must do work which does not allow placing of the feet on the ground, it is recommendable to use a footrest (separate or fastened to the lower section of the seat) in order to obtain the recommended position for the upper legs which should be at an angle of 90 to 110° in relation to the hips.

2. Lower back support:

When seated, the operator must be able to adjust the backrest height so that the lower back support adapts to the natural arch of the operator's back (lumbar arch). The back must be slightly inclined to the rear (an angle of 110 degrees is generally recommended).

3. Seat reclining:

The seating and backrest may be inclined for greater comfort.

4. Depth:

Once seated, the user must be able to rest against the backrest without the seat applying pressure behind the knees. Some seats have an adjustable seating depth.

5. Width:

The seating surface must be sufficiently wide to avoid compression of the sides of the thighs.

SEATING COMFORT

Seating comfort is the result of a combination of factors:

- Shock absorption of the gas lift column, which is most noticeable when the user sits down, allows a gentler contact at the moment of seating.
- The seating mechanism which enables adaptation of the seating position according to the morphology of the user and the tasks to be carried out.
- Thickness of the seating surface to avoid contact with the rigid frame elements of the seat and backrest.
- Quality of the upholstery ensuring seating stability and air circulation for a more comfortable contact.
- The softness of the foam padding for a more pleasant contact. This is a fundamental element for increasing both comfort and ergonomics.



As is the case for all its products, SOFAME seating is designed to privilege robustness and longevity thanks to the use of high-quality components. The choice of polyurethane renders seat upkeep and maintenance easier.

SOFAME GENERAL TERMS AND CONDITIONS OF SALE

PREAMBLE

These general terms and conditions of sale govern product sales by Sofame, a company entered on the Le Mans company and trade register under no. 449 706 365, having its head office at Route de Bonnetable, 72190 Sargé-Les-Le-Mans (hereinafter "Sofame").

They apply to product sales both within France and abroad.

The original version of these general terms and conditions of sale is written in French and is the only legally binding version that will prevail over any other version translated into a foreign language and over any general terms and conditions of purchase or any other document provided by the customer, whatever their provisions.

Placing an order with Sofame implies the full unconditional acceptance of Sofame's price lists and these general terms and conditions of sale. Any other conditions contrary to these general terms and conditions will only be taken into account if expressly accepted by Sofame before the date of the Contract's conclusion. These general terms and conditions of sale annul and supersede any former general terms and conditions as well as any documents (letters, prospectus, advertisements, etc.) exchanged by the parties before the conclusion of any final agreement. If any provision of any contract resulting from these general terms and conditions of sale is held to be invalid by a court or any other administration or authority, such a decision will in no way affect the validity of the other provisions. The failure to exercise any right granted by these general terms and conditions of sale at any time or the failure to insist upon the performance of any provision of the contract resulting from these general terms and conditions will in no way be construed as a modification of the contract or as an express or implied waiver to exercise said right in the future or to insist upon the proper performance of the obligations agreed to under these general terms and conditions.

GOVERNING LAW

Any question relating to these general terms and conditions of sale, and to the sales to which they apply, that is not dealt with by the contractual provisions will be subject to the provisions of French law, excluding the 1980 Vienna Convention on the International Sale of Goods. Any reference to an ICC publication will be considered as referring to the version in force on the date the contract is concluded.

Any reference to commercial terms or provisions will be considered as referring to the corresponding terms and provisions of the Incoterms published by the International Chamber of Commerce (hereinafter "ICC") as construed by the Commission on Commercial Law and Practice and its board of experts (ICC Paris).

WARRANTY

Our materials are covered by a 5-year parts and labour warranty for any manufacturing defect under normal use, excluding mechanisms and seat coverings which come with a 2-year warranty. Unless specifically agreed by contract, Sofame will not be compelled to ensure the maintenance of the furniture shown in this catalogue. You should regularly (at least once a year) check that the mechanical items are operating correctly and inspect all frames. Any person responsible for assembling, using or maintaining our furniture must have read and understood the instructions and guidelines.

PRODUCTS

When ordering, customers must precisely describe the specific features and quality of the products they require. Those products are intended to be used in connection with the customer's professional activity.

Sofame reserves the right to make any change to its products that it deems useful, up to the delivery of the products, and without any obligation to change the products already delivered or currently on order.

ORDERS & CONCLUSION OF THE CONTRACT

To be taken into account, orders must be placed by a customer whose business longevity is not jeopardised, who has no record of behaviour prejudicial to Sofame (including payment issues), who is not located in a hazardous geographical area (e.g. natural, political, economic or social risk) and who is not located in a country where the products are legally unavailable, for example because of particular regulations or of an exclusivity granted to a third party. As such, the customer is responsible for obtaining any authorisation, permit or licence required to import and buy/sell the products in their region, at their own expense. The order's eligibility is also subject to the physical availability of the products. Sofame cannot accept orders from the customer for products that are temporarily or permanently unavailable. Any modification of the order by the customer before the conclusion of the contract will be taken into account only if this modification is reasonable, does not entail a quantity decrease of more than 10% of the initial order amount (duties and taxes excluded) and has been accepted in writing by Sofame. If not expressly rejected within a 30 day period, the modification will be deemed accepted. The sales contract will only be considered concluded when Sofame provides written confirmation of the order initially placed by the customer. The sales contract will be deemed validly concluded unless the order is not expressly confirmed within a 30 day period after receipt of said order. Any orders received by Sofame agents, representatives or employees will also be confirmed. However, orders will be deemed final and the contract validly concluded, unless the order is received by the aforementioned and not expressly confirmed within a 30 day period following receipt. Any modification or withdrawal of the order by the customer between the conclusion of the sales contract and the product dispatch date will be taken into account only if this modification is reasonable, does not entail a quantity decrease of more than 10% of the initial order amount (duties and taxes excluded) and has been accepted in writing by Sofame. If not expressly rejected within a 30 day period, the modification will be deemed accepted. In case of withdrawal or modification of an order, any down payments that may have been made will remain with Sofame without prejudice to any right to compensation for any damage resulting from the modification or withdrawal of an order. Sofame may ask the customer to provide documents proving the guarantee of an order's payment at any time. Should the customer fail to provide sufficient proof, Sofame reserves the right to cancel finalised and other orders.

DELIVERY

The products will be delivered according to one of the incoterms published by the International Chamber of Commerce (Incoterm 2020), with the appropriate term being chosen and stated on the order. For export sales, product deliveries can occur under these incoterms: EXW (Ex Works), DAP (Delivered At Place), or FAS (Free Alongside Ship). This information is given as an indication only, without prejudice to another incoterm being stated for the delivery of the order in question. The stated incoterm will be recorded on the order confirmation issued by Sofame and any other document relating to the order. No modification of the delivery terms, including the stated incoterm, can occur without Sofame's prior agreement.

Sofame will be considered as having fulfilled its obligation to deliver as soon as the products are provided to the customer or any third party appointed by the customer at the agreed place, without it being necessary for the products to be loaded on any transportation means after delivery. Sofame will ensure transportation of the products to the place of delivery by the means of its choice and will take all the necessary steps for this. Any additional costs incurred by Sofame in transporting the goods from the delivery site to another site, as an additional service, will be directly charged to the customer. Since deliveries are only made according to product availability and in the order of arrival of the orders, Sofame is authorised to make full and partial deliveries. In case of partial delivery, each delivery will be charged separately.

The delivery time frame will be determined by the parties after the order has been placed. In any case, time frames are provided for information purposes only and depend on Sofame's available transport and supplies. Exceeding the time frame will in no case give rise to any damages being awarded or the sales contract being terminated. However, any order exceeding €16,000 (duties and taxes excluded) or any modification of a current order will result in an extended delivery time frame. If the customer does not take delivery of the products within 10 days of their delivery by Sofame, the customer will bear all the costs and assume all the risks for preserving the products, without formal notice being necessary, and it will forfeit the right to claim an obvious defect or compliance issue.

TRANSFER OF RISKS

Sofame will bear all the risks of loss or damage that may affect the products up to the delivery of those products pursuant to the preceding article. After delivery, the customer will bear the risks affecting or caused by the products. For export sales, the transfer of risks occurs in accordance with the selected incoterm that applies to the order.

COMPLIANCE

The condition, compliance, absence of obvious defects and number of products must be checked by the customer when the products arrive at the place of delivery, in the presence of the carrier. Any costs and risks relating to such checks are borne by the customer. Any complaint, reservation or dispute relating to missing and/or damaged products must be notified by registered letter with acknowledgement of receipt to the carrier within 3 days (holidays excluded) following delivery of the products. The customer will be held responsible for any loss suffered by Sofame for any failure to comply with this process. Any complaint, reservation or dispute will also be mentioned on the documents handed over (in particular on the delivery slip) and confirmed in writing to Sofame as soon as possible after delivery. The customer will provide all proof about the reality of the defects noted. Sofame reserves the right to inspect, check or repair products on site, either itself or through an agent or sub-contractor. If these conditions are not complied with, the delivery will be deemed unconditionally accepted and Sofame will no longer be liable for any product compliance issues. The customer will be liable for any loss suffered by Sofame for any failure to comply with this process. Sofame will only be held responsible for defects, anomalies and shortages arising as a result of its own actions. Any product returns due to obvious defects must have already been approved by Sofame. Any faulty products must be returned within 30 days of delivery. All returned products must be in original condition and packaging. Products that have been dismantled or used will not be accepted. The costs and risks for returns will always be borne by the customer. Faulty products will be replaced by similar products, meaning products that can be substituted for the products ordered, being of the same quality and complying with the same conditions of use. If the returned products are not replaced, a refund will be issued in the form of a credit on future orders. Product returns will not give rise to any payment of compensation to the customer.

SOFAME GENERAL TERMS AND CONDITIONS OF SALE

WARRANTY AGAINST HIDDEN DEFECTS

Any hidden defects existing on the date the contract is concluded must be notified in writing by the customer as soon as possible after the date on which the defect is or should have been discovered. Notifications will not be taken into account if they are issued more than 30 days after the products arrived. The customer must claim on the warranty for the product's hidden defects within 30 days of the date on which it discovers or should have discovered the hidden defect. This period is the short period set out in Article 1648 of the French Civil Code. No warranty claims for hidden defects can be made by the customer more than 2 months after the products arrived. It is expressly agreed that after the expiration of this period the customer may not invoke the warranty against hidden defects nor use it as a counter-claim to defend itself in a lawsuit brought against it by Sofame for failure to perform the sales contract. The customer will provide all proof regarding the reality and the date of occurrence of the defects noted. Sofame reserves the right to inspect, check or repair products on site, either itself or through an agent or sub-contractor. If these conditions are not complied with, the warranty against hidden defects cannot be claimed. Any product returns due to hidden defects must have already been approved by Sofame. Products must be returned within 30 days of the customer notifying of the hidden defect. All returned products must be in perfect storage condition. Any that have been dismantled or used will not be accepted. The costs and risks for returns will always be borne by the customer. Faulty products will be replaced by similar products, meaning products that can be substituted for the products ordered, being of the same quality and complying with the same conditions of use. If the returned products are not replaced, a refund of any sums already paid for them will be issued. Product returns will not give rise to any payment of compensation to the customer.

DURATION OF THE OFFER

Sofame undertakes to maintain stock and/or to keep the capacity to manufacture spare parts on request for products in the ranges with NF Environment (Furniture) certification. Sofame offers its customers the option of purchasing individual components and products in the ranges with NF Environment (Furniture) certification for the effective period during which they are industrially manufactured. Sofame undertakes to supply the original parts and parts providing equivalent functions, during a period of 5 years following the date on which production of the ranges with NF Environment (Furniture) certification ceases.

PRODUCT PRICES

Products are invoiced at the price given on Sofame's current price list when the products are ordered and the contract concluded. The prices given on that date are firm and final. However, Sofame reserves the right to unilaterally modify the prices in the event of any change in economic circumstances, or its supplier's price increases, competition or general price changes, until the products have been delivered. The parties may agree upon a price review formula when there is a long-term supply contract in place. The prices do not include VAT and are exclusive of taxes. All other applicable fees, taxes and duties in the country importing the goods will be borne by the customer. Furthermore, for every product order Sofame will invoice a fixed amount of €3.50 excl. VAT per invoice for processing fees.

PAYMENT

Unless otherwise agreed or a cash payment being required (specifically for your first order with Sofame or in the event of payment issues for a previous order), invoices issued by Sofame are payable in euros to Sofame head office within 45 days end of month or 60 days net from the date of issue of the invoice. Under this article, a payment means the effective provision of funds to Sofame. Any payment made after the due date set by these general terms and conditions of sale will automatically and without formal notice incur: i) late payment penalties based on the outstanding sum and equal to the interest rate applied by the European Central Bank to its refinancing transactions at the time the balance becomes overdue, plus seven percentage points; ii) payment of a fixed debt collection fee of €40 if the costs are less than that amount, or if they exceed that amount the fee is equal to the cost effectively incurred by Sofame while recovering the debt. Any delay or default on total or partial payment will furthermore give Sofame the right to immediately suspend any current contracts and, for all amounts payable by the customer for whatsoever reason but not yet due, Sofame has the right to demand immediate payment. Sofame reserves the right to automatically terminate the contract resulting from these general terms and conditions should a debt remain unsatisfied 30 days after the issue of a formal request for payment as well as any preceding contracts even if they are not yet due for payment. In such a case, the products will be returned at Sofame's request, at the customer's risks and expense, without prejudice to any other damages. Sofame also reserves the right to keep any payments and down-payments already made by the customer for whatsoever reason. In case of any payment issues, Sofame also reserves the right to retain any products that have not yet been delivered to, or paid for by, the customer. Invoices must be paid by the means of payment stated on the invoice or agreed at the time of ordering.

RETENTION OF OWNERSHIP CLAUSE

The products are sold under retention of ownership until full payment has been received. Payment means the payment of the price of the products, costs relating to the sale and any interest. These conditions do not preclude the transfer of risk for the products to the customer on delivery. In case of non-payment, customers are responsible for returning unpaid products at their own risk and expense, following receipt of a formal notice by registered letter with acknowledgement of receipt. Any products in the customer's stock are deemed to be those unpaid products. In this case, the sale will be automatically terminated on the date of the return request. Sofame will keep any down payments paid as damages, without prejudice to any other indemnification. The customer will also pay depreciation compensation set at 10% of the price of the products by quarter of possession, until all of those products have been returned. Sofame regaining possession of the products does not exclude other legal procedures that Sofame may initiate. Under no situation may customers supply, pledge or grant securities on the unpaid products. In addition, the customer must immediately inform Sofame of any change in its situation, in particular concerning its declaration of receivership or compulsory liquidation, to enable Sofame to claim ownership of the products.

CONFIDENTIALITY

The customer will keep all the information provided by Sofame before or after the conclusion of the contract strictly confidential and undertake to refrain from disclosing or using it for purposes other than those listed in the contract, even if that information was not marked as confidential when provided. Any documents provided by Sofame remain its sole property and must be returned on request. The confidentiality obligation remains in force after the expiration of this contract. The customer must also ensure that its employees, agents and representatives or sub-representatives also uphold this confidentiality clause. As such, the customer will take all necessary and reasonable measures to prevent any prohibited disclosure or use of its secrets by those people, will require them to comply with the same confidentiality obligation and will provide a direct right of action for Sofame should this obligation be breached. Any breach of the confidentiality obligation will give rise to the payment of damages.

INTELLECTUAL AND INDUSTRIAL PROPERTY


The customer has no intellectual or industrial property rights over the products or packaging. Sofame remains the exclusive owner of all these rights. Any use by the customer, in any manner whatsoever, of the Sofame brand or any other brand belonging to Sofame is strictly forbidden, unless previously and expressly agreed by Sofame. The customer authorises Sofame to have its name appear among the list of commercial customers that Sofame may cite or publish. The delivered contractual products may only be marketed under the Sofame brand or any other brand owned by Sofame, excluding any branding or distinctive sign owned by the customer or any other person. When the contractual products are repacked by the customer, the latter undertakes to clearly show the Sofame brand and distinctive signs, in accordance with the Sofame's instructions, on the packaging and/or wrapping of the delivered contractual products. As such, the customer must rapidly obtain Sofame's prior consent on the terms of affixing the branding and distinctive signs on the wrapping and/or packaging. The customer will inform Sofame as soon as it is aware of any legal action brought against it regarding the intellectual and industrial property of Sofame products, and will not take any step without having expressly referred to Sofame. Sofame has the sole authority to lead the legal proceedings and decide on any step to be taken in terms of the products, with regard to both the courts and any interested third parties. Sofame will indemnify and hold harmless the customer against any conviction, provided that the conditions mentioned above are complied with.

FORCE MAJEURE

If a Force Majeure event occurs, Sofame will in no case be held liable. Events that it could not reasonably be avoided or overcome are considered as force majeure events when their occurrence makes it completely impossible for Sofame to perform its obligations. This includes, but is not limited to: wars, natural disasters, embargoes, notable changes of the political situation in the customer's country, epidemics, events likely to prevent the smooth operation of Sofame's business or that of its suppliers or sub-contractors (such as strikes, lock-outs, total or partial unemployment, raw material shortages, accidents, fires, supply difficulties, and transport interruptions or delays). Should a force majeure event last for more than 60 days, Sofame may automatically ask that the contract automatically lapse by giving notice to the customer by registered letter with acknowledgement of receipt or by facsimile.

JURISDICTION

Any dispute relating to these general terms and conditions of sale, as well as to any sales to which they apply, will, if not amicably settled, be exclusively governed by the commercial court nearest to the Sofame head office in France, even if they are several actions or parties, or in case of third party recourse or summary proceedings.

 Sofame is a Valdella member.

Products intended for the French market are subject to the eco-contribution according to the scales set by the sector.

Indicative prices valid until 31/03/2022 subject to variations depending on the cost of materials and currency parities. Prices subject to VAT at the normal rate in force. The technical and dimensional data as well as the visuals are provided for information only and are not contractual.



 **SO FAME**



SHIPPING WITHIN 48H*

www.sofame.fr



* Subject to available quantities - Photo credits: Studio JM2 / Illusion 3D
Automated design and page layout: **HASTON: TEN**
January 2022